



14 North Craig, Windermere
£490,000



14 North Craig

Windermere, Windermere

This well presented detached bungalow is pleasantly located in a popular residential area, convenient for the amenities available in Windermere and Bowness villages, within walking distance of cafes and bars, post office, bakery, pharmacy with links to public transport services and the M6 motorway.

The accommodation comprises a spacious sitting room with log-burning stove, patio doors to the rear garden with views through woodland to Lakeland Fells. A dining room opens to the light modern kitchen which is equipped with integrated appliances and has access to the courtyard.

There are three double bedrooms, one with ensuite toilet. The modern bathroom suite comprises wc, pedestal basin, bath with shower over and heated towel rail. From the hall there is access to the garage through a utility room. There is a 2nd porch with storage, entered from the ramp and decking. The property benefits from double glazing and gas central heating.

Outside there is a garage, sunny paved courtyard ideal for relaxing and entertaining, with access to further enclosed yard and gate access to the road. The rear garden has decking and ramp access to the house, slate gravel, well stocked borders, established hedges and views through woodland to Lakeland Fells.

The house is situated on 'The Craig Estate' which are private grounds of woodland and rock gardens. There is also a communal area for storage of trailers, boats, caravans. The road is adopted and council maintained.

The property is offered for sale with no upper chain.

- Pleasant detached bungalow
- Desirable location at the end of a quiet cul-de-sac
- Sold with NO ONGOING CHAIN
- Neutrally decorated throughout
- Modern well equipped kitchen
- Easy to manage gardens to front and rear
- THREE double bedrooms
- Garage
- Sitting Room with WOODBURNER

From our Windermere office proceed towards Bowness on Windermere along the A5074 New Road/Lake Road. Turn left just before the police station into Craig Walk and continue up the hill taking the first turning on the right into north Craig and take the next right where Number 14 can be found on the right.
WHAT3WORDS:smug.chains.handicaps

Council Tax band: E

Tenure: Freehold

EPC Energy Efficiency Rating: D

IDENTIFICATION CHECKS

Should a purchaser(s) have an offer accepted on a property marketed by THW Estate Agents they will need to undertake an identification check. This is done to meet our obligation under Anti Money Laundering Regulations (AML) and is a legal requirement. We use a specialist third party service to verify your identity. The cost of these checks is £43.20 inc. VAT per buyer, which is paid in advance, when an offer is agreed and prior to a sales memorandum being issued. This charge is non-refundable.





GROUND FLOOR

SITTING ROOM

19' 11" x 11' 8" (6.06m x 3.55m)

6.06m x 3.55m (19' 11" x 11' 8") Double glazed French doors, radiator, wood burning stove.

DINING ROOM

13' 3" x 8' 7" (4.04m x 2.61m)

4.04m x 2.61m (13' 3" x 8' 7") Radiator, access to partially boarded loft with light.

KITCHEN

12' 0" x 10' 10" (3.65m x 3.30m)

3.65m x 3.30m (12' 0" x 10' 10") Double glazed door, double glazed windows, sky light, good range of base and wall units, sink, integrated appliances including oven, grill and microwave, electric hob with extractor/filter over, dishwasher and fridge freezer, granite worktop, granite splashback, recessed spot lights.

BEDROOM

13' 0" x 9' 1" (3.97m x 2.76m)

3.97m x 2.76m (13' 0" x 9' 1") Double glazed window, radiator.

ENSUITE TOILET

7' 0" x 3' 4" (2.13m x 1.02m)

2.13m x 1.02m (7' 0" x 3' 4") Double glazed window, W.C. wash hand basin.

BEDROOM

12' 0" x 11' 11" (3.65m x 3.64m)

3.65m x 3.64m (12' 0" x 11' 11") Double glazed window, radiator.

BEDROOM

12' 0" x 8' 11" (3.66m x 2.72m)

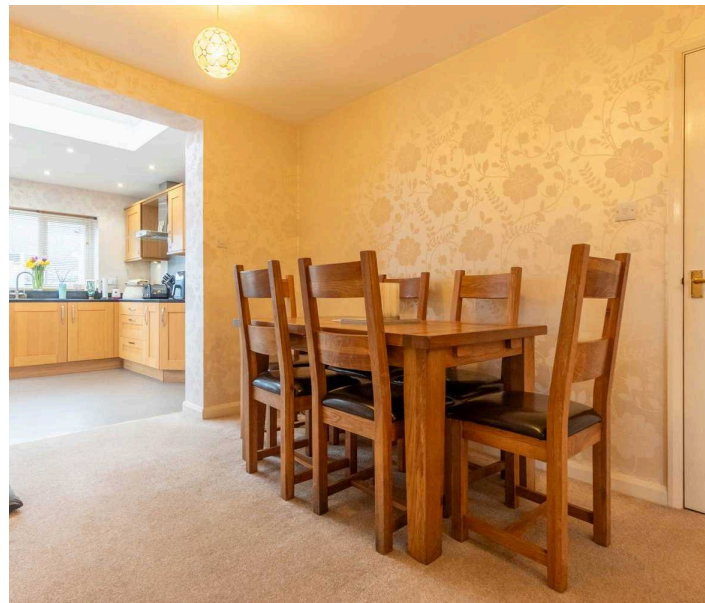
3.66m x 2.72m (12' 0" x 8' 11") Double glazed window, radiator.

BATHROOM

8' 6" x 5' 6" (2.59m x 1.68m)

2.59m x 1.68m (8' 6" x 5' 6") Double glazed window, heated towel radiator, three piece suite comprises W.C. wash hand basin and bath with thermostatic shower fitment over, panelled walls, built in cupboard housing gas combination boiler, extractor fan.

HALLWAY



GROUND FLOOR

SITTING ROOM

19' 11" x 11' 8" (6.06m x 3.55m)

6.06m x 3.55m (19' 11" x 11' 8") Double glazed French doors, radiator, wood burning stove.

DINING ROOM

13' 3" x 8' 7" (4.04m x 2.61m)

4.04m x 2.61m (13' 3" x 8' 7") Radiator, access to partially boarded loft with light.

KITCHEN

12' 0" x 10' 10" (3.65m x 3.30m)

3.65m x 3.30m (12' 0" x 10' 10") Double glazed door, double glazed windows, sky light, good range of base and wall units, sink, integrated appliances including oven, grill and microwave, electric hob with extractor/filter over, dishwasher and fridge freezer, granite worktop, granite splashback, recessed spot lights.

BEDROOM

13' 0" x 9' 1" (3.97m x 2.76m)

3.97m x 2.76m (13' 0" x 9' 1") Double glazed window, radiator.

ENSUITE TOILET

7' 0" x 3' 4" (2.13m x 1.02m)

2.13m x 1.02m (7' 0" x 3' 4") Double glazed window, W.C. wash hand basin.

BEDROOM

12' 0" x 11' 11" (3.65m x 3.64m)

3.65m x 3.64m (12' 0" x 11' 11") Double glazed window, radiator.

BEDROOM

12' 0" x 8' 11" (3.66m x 2.72m)

3.66m x 2.72m (12' 0" x 8' 11") Double glazed window, radiator.

BATHROOM

8' 6" x 5' 6" (2.59m x 1.68m)

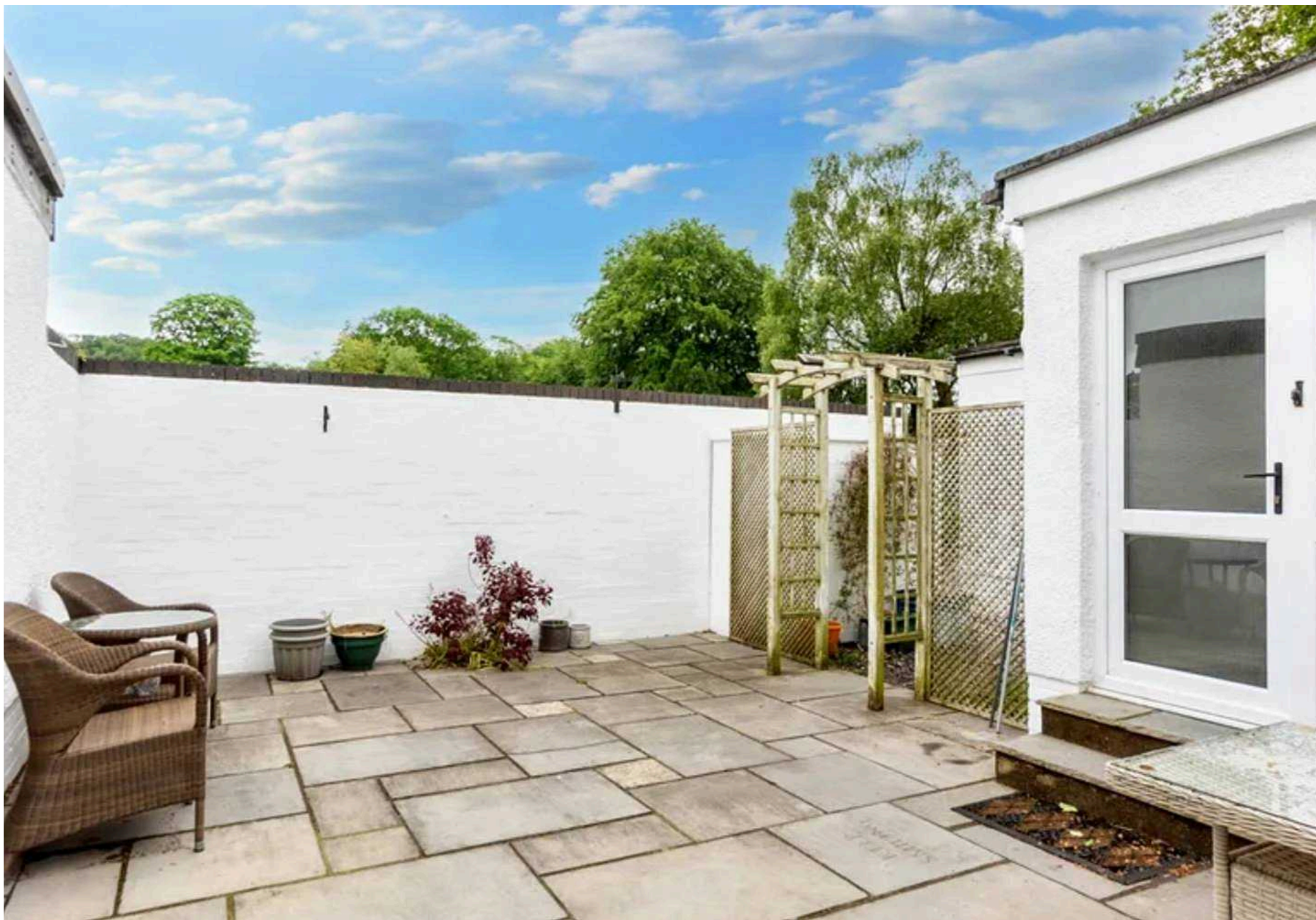
2.59m x 1.68m (8' 6" x 5' 6") Double glazed window, heated towel radiator, three piece suite comprises W.C. wash hand basin and bath with thermostatic shower fitment over, panelled walls, built in cupboard housing gas combination boiler, extractor fan.

HALLWAY

17' 5" x 8' 6" (5.32m x 2.59m)









THW Estate Agents

25b Crescent Road, Windermere - LA23 1BJ

015394 47825 • windermere@thwestateagents.co.uk • www.thwestateagents.co.uk

Please note that descriptions, photographs and plans are for guidance only. Services and appliances have not been tested, measurements are approximate and alterations may not have necessary consents. Contact us for property availability and important details before travelling or viewing properties. THW Estate Agents Ltd is a separate legal entity to the solicitor firm of THW Legal Ltd which has different ownership and clients of THW Estate Agents Ltd do not have the same protection as those of THW Legal Ltd.