



HOME TRUTHS
SALES AND LETTING AGENT

Larkfield, Ecclestone

Chorley

£925 pcm



Delightful three bedroom detached property with countryside views to rear and close to all local amenities including shops and schools. Available to let immediately.

The driveway, for two cars, leads past the front garden, which is mainly laid to lawn. Step into the main entrance and the welcoming hallway with stairs off and ground floor toilet with wc and wash hand basin. To the right is the spacious lounge with picture window to the front, feature fireplace and large patio doors leading out to the garden.

The kitchen, with tiled flooring, offers plenty of natural light with contrasting work surfaces and units. Integrated appliances including oven with hob above, fridge, freezer and space for a washing machine. The kitchen leads onto the conservatory with fantastic views out to the garden with patio area, lawn and an area for planting. The garden includes a shed with light and power.

To the first floor are two double bedrooms with built in wardrobes and storage space. The third bedroom is a smaller single, but also has wardrobe and storage space included. The modern three piece bathroom offers wash hand basin, low level wc and shower enclosure.



The property is available now and requires a deposit of £1065 including holding deposit of £210.

Council Tax Band: D

EPC:

- Three bed detached
- Lovely views to the rear
- Modern kitchen and bathroom
- Driveway
- Close to local amenities
- Available now



Eccleston Branch
265 The Green, Eccleston, PR7 5TF
01257 451673

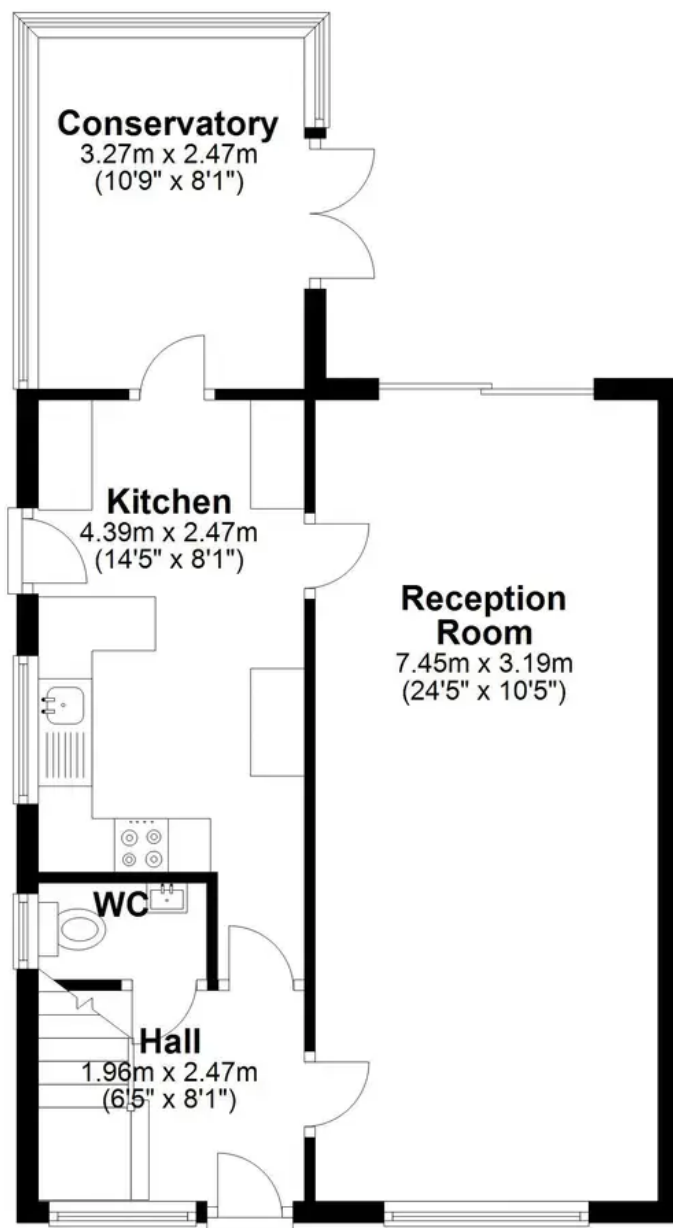
Coppull Branch
244 Spendmore Lane, Coppull, PR7 5DE
01257 794588

www.hometruthslancs.co.uk
office@hometruthslancs.co.uk



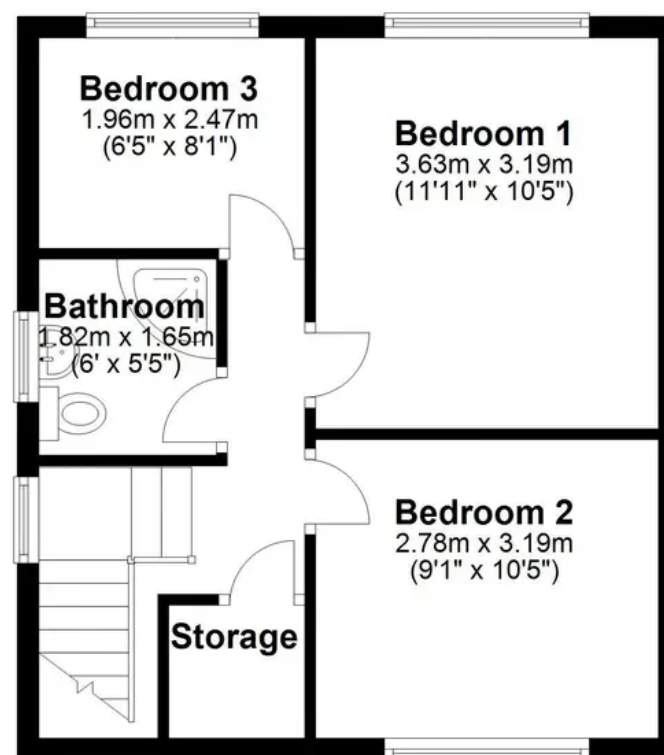
Ground Floor

Approx. 51.2 sq. metres (551.6 sq. feet)



First Floor

Approx. 37.5 sq. metres (403.6 sq. feet)



Total area: approx. 88.7 sq. metres (955.2 sq. feet)

THIS FLOOR PLAN IS FOR ILLUSTRATION ONLY AND IS NOT A SCALE DRAWING
Plan produced using PlanUp.