

FOR SALE



Rewley Road, Oxford

2 Bedrooms, 2 Bathroom, First Floor Apartment

Guide Price £420,000





Key Points:

- Two Double Bedrooms
- Master Bedroom inc En-Suite Shower Room
- Kitchen
- Living Room
- No Onward Chain
- Council Tax Band: D
- Service Charge: £1,515.00 PA
- Share of Freehold
- Ground Rent: £100.00 PA

Score	Energy rating	Current	Potential
92+	A		
81-91	B		
69-80	C	76 C	79 C
55-68	D		
39-54	E		
21-38	F		
1-20	G		



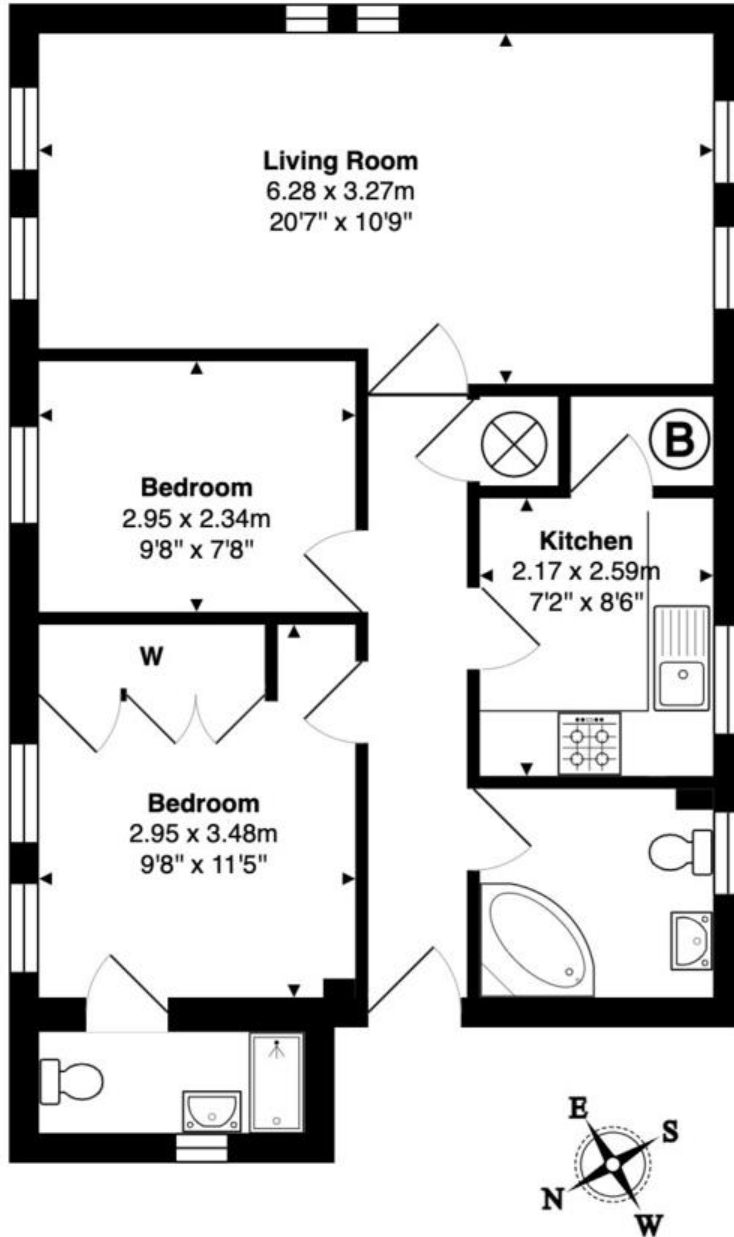
Martin & Co welcome this Two Bed First Floor Apartment situated on Rewley Road. The apartment comprises of Two Bedrooms, Two Bathrooms, Spacious Living/Dining Room and Kitchen. Sold with NO ONWARD CHAIN.

As you enter the apartment, you have the Master Bedroom on the left hand side. This benefits from having an En-Suite Shower Room and built in Wardrobes. Leading on the left hand side is the Second Bedroom. On the right hand side, there is the Main Bathroom which has a Bath, Sink Basin and Toilet with a Towel Heater.

Further through, there is the kitchen which has access to a Utility Cupboard. Finally, there is the spacious Living Dining Room at the end of the apartment which has South Facing Windows allowing plenty of natural light.

Viewings are recommended and any questions please contact Martin & Co Oxford.





Approx. Gross Internal Area: 58.9 m² ... 634 ft²

Whilst every attempt has been made to ensure the accuracy of the floor plan contained here, measurements of doors, windows, rooms, and any other items are approximate. No responsibility is taken for any error, omission, or mis-statement.

This plan is for illustrative purposes only and should be used as such.

Drawn by E8 Property Services. www.e8ps.co.uk

Martin & Co Oxford

31 Woodins Way • Paradise Street • • OX1 1HD
T: 01865 812110 • E: oxford@martinco.com

01865 812110

<http://www.martinco.com>



Accuracy: References to the Tenure of a Property are based on information supplied by the Seller. The Agent has not had sight of the title documents. A Buyer is advised to obtain verification from their Solicitor. Items shown in photographs including but not limited to carpets, fixtures and fittings are not included unless specifically mentioned within the sales particulars. They may however be available by separate negotiation. Buyers must check the availability of any property and make an appointment to view before embarking on any journey to see a property. No person in the employment of the agent has any authority to make any representation about the property, and accordingly any information given is entirely without responsibility on the part of the agents, sellers(s) or lessors(s). Any property particulars are not an offer or contract, nor form part of one. **Sonic / Laser Tape:** Measurements taken using a sonic / laser tape measure may be subject to a small margin of error. **All Measurements:** All Measurements are Approximate. **Services Not tested:** The Agent has not tested any apparatus, equipment, fixtures and fittings or services and so cannot verify that they are in working order or fit for the purpose. A Buyer is advised to obtain verification from their Solicitor or Surveyor.