





Property Summary

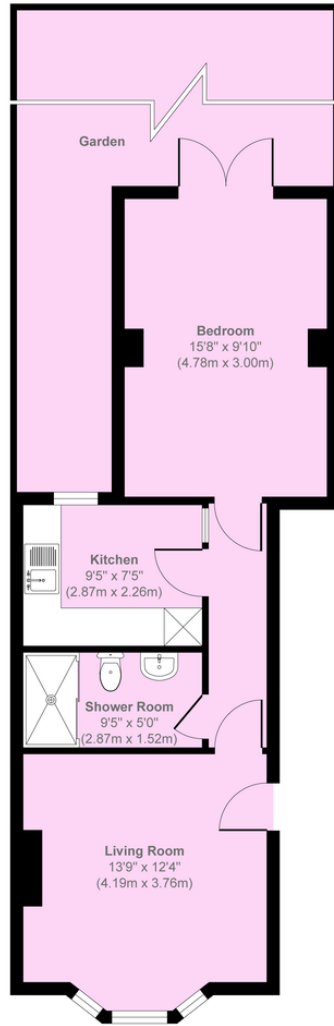
Located in a residential street, yet just 0.5 mile from many amenities. This is a ground floor garden flat, with direct access to a private rear garden. This self-contained flat is offered for sale with a share of the freehold. The accommodation comprises of a Living room with a separate kitchen. There is a modern shower room with a good-sized bedroom onto the garden. The layout of the flat lends itself to a 'side return' extension, which would add value (STPP). For sale with no onward chain.

Property Features

- Share of Freehold
- Garden Flat
- Direct Access to private garden
- Living Room and
- Separate Kitchen
- Modern shower room with big shower
- Victorian
- Potential to extend - side return (STPP)
- Catford Bridge Stn 0.6 Mile
- Mountsfield Park 0.3 Mile







Floor Plan
Approximate Floor Area
499 sq. ft
(46.35 sq. m)

Approx. Gross Internal Floor Area 499 sq. ft / 46.35 sq. m

Illustration for identification purposes only, measurements are approximate, not to scale.

Copyright © markbeaumont.com

Produced by Elements Property

EPC ordered