



203 Elleray Gardens, Windermere
£115,950



Your Local Estate Agents **Thomson Hayton Winkley**

203 Elleray Gardens is a well proportioned purpose built second floor retirement apartment exclusive for those aged 55 years and over. The apartment provides secure living arrangements and comprises an entrance hall with airing cupboard and storage cupboard, sitting/dining room, kitchen, bedroom and a bathroom. There are emergency pull cords in every room which alert the resident warden and the property benefits from double glazing and electric heating. The communal areas include a residents lounge, a laundry room, a guest suite for overnight visitors and a landscaped garden. There is development residents parking and visitor parking.

ENTRANCE HALL

13' 7" x 12' 9" (4.15m x 3.89m)

Electric storage heater, built in airing cupboard housing hot water cylinder, built in cupboard, fridge freezer, loft access, entry phone.

SITTING/DINING ROOM

15' 8" x 12' 0" (4.77m x 3.67m)

Two double glazed windows, electric storage heater, coving, television point, telephone point.

KITCHEN

6' 10" x 5' 3" (2.08m x 1.6m)

Double glazed window, base and wall units, stainless steel sink, electric cooker, extractor fan, tiled splashbacks.

BEDROOM

11' 9" x 8' 7" (3.58m x 2.62m)

Double glazed box bay window, fitted shelving and hanging rail.

BATHROOM

6' 9" x 5' 9" (2.07m x 1.76m)

Heated towel rail, three piece suite in white comprises W.C. wash hand basin to vanity and bath with electric shower over, extractor fan, tiling to walls, shaver point, fitted mirror, two fitted mirrored wall units.

EPC RATING C

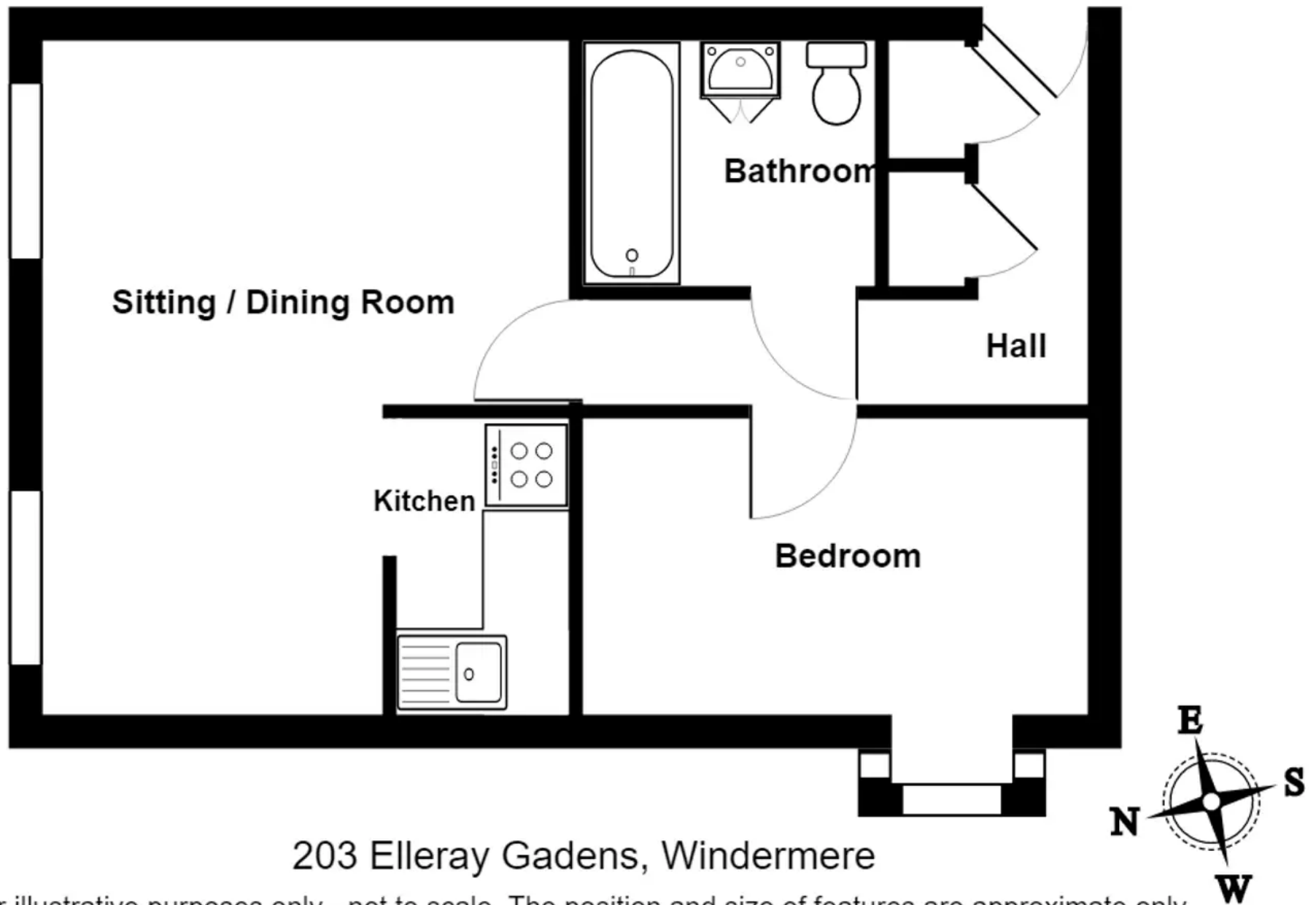
SERVICES

Mains electricity, mains water, mains drainage.

TENURE: Leasehold

DIRECTIONS: From the A591 in the direction of Ambleside take the second left turn in to Windermere on to Elleray Road, turn right on to College Road then immediately right into the Elleray Gardens development.





203 Elleray Gardens, Windermere

For illustrative purposes only - not to scale. The position and size of features are approximate only.

© North West Inspector.



THW Estate Agents

25B Crescent Road, Windermere - LA23 1BJ

015394 47825 • windermere@thwestateagents.co.uk • www.thwestateagents.co.uk



Your Local Estate Agents **ThomsonHaytonWinkley**