

ADDISON TOWNSEND

PROPERTY PROFESSIONALS



£350,000

Osborne Road, London N13



1

Bedroom



1

Bathroom

913 Green Lanes, Winchmore Hill, London, N21 2QP |
info@addisontownends.co.uk

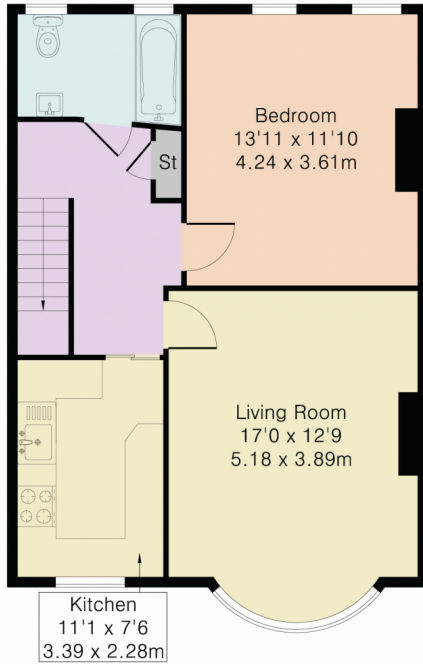
442088826828



Rare to the market, Addison Townsend are pleased to offer this lovely freehold one bedroom Edwardian conversion flat in a quiet residential location in Palmers Green within 0.6 miles of Palmers Green Overground Station and within easy access of local parks, transport links, shops and restaurants. The property offers a spacious living room, fitted kitchen, one bedroom, bathroom and further potential to extend into the loft subject to the usual planning consents. The property is being offered chain free and with the freehold.



Approximate Gross Internal Area 605 sq ft – 56 sq m



Energy Efficiency Rating		
	Current	Potential
<i>Very energy efficient - lower running costs</i>		
(92+) A		
(81-91) B		
(69-80) C	71	79
(55-68) D		
(39-54) E		
(21-38) F		
(1-20) G		
<i>Not energy efficient - higher running costs</i>		
England, Scotland & Wales		EU Directive 2002/91/EC

Address: Osborne Road, London N13



Although Pink Plan Ltd ensures the highest level of accuracy, measurements of doors, windows and rooms are approximate and no responsibility is taken for error, omission or misstatement. These plans are for representation purposes only as defined by RICS code of measuring practise. No guarantee is given on total square footage of the property within this plan. The figure icon is for initial guidance only and should not be relied on as a basis of valuation.

