



20 Ewart Road, Portsmouth

Offers in Region of £249,000

 chinneckshaw



20 Ewart Road

Portsmouth

Looking for a family home in Portsmouth? Look no further than this delightful mid-terraced property, boasting 3 bedrooms, a downstairs bathroom, and an east-facing garden with a lovely lawn area and garden shed.

Step inside and you'll find a warm and inviting living room on the ground floor, perfect for relaxing with family and friends. Beyond that, you'll find a second reception room that could be used as a dining room, playroom, or office - the choice is yours.

The large kitchen is sure to impress with its ample storage and worktop space, making meal prep a breeze. And when it's time to retire for the night, you'll find three comfortable bedrooms on the first floor, each offering a peaceful haven for a good night's sleep.

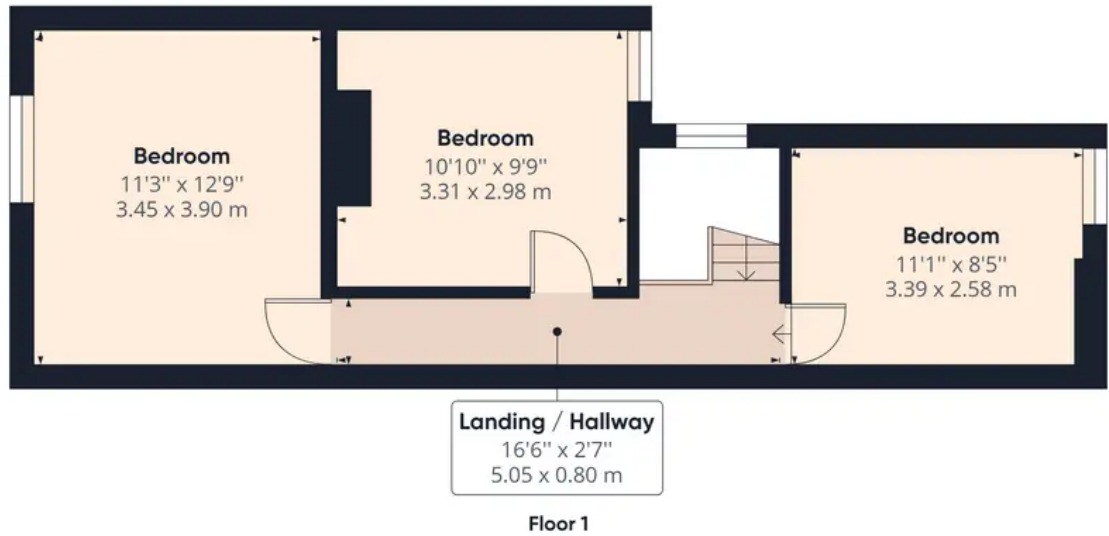
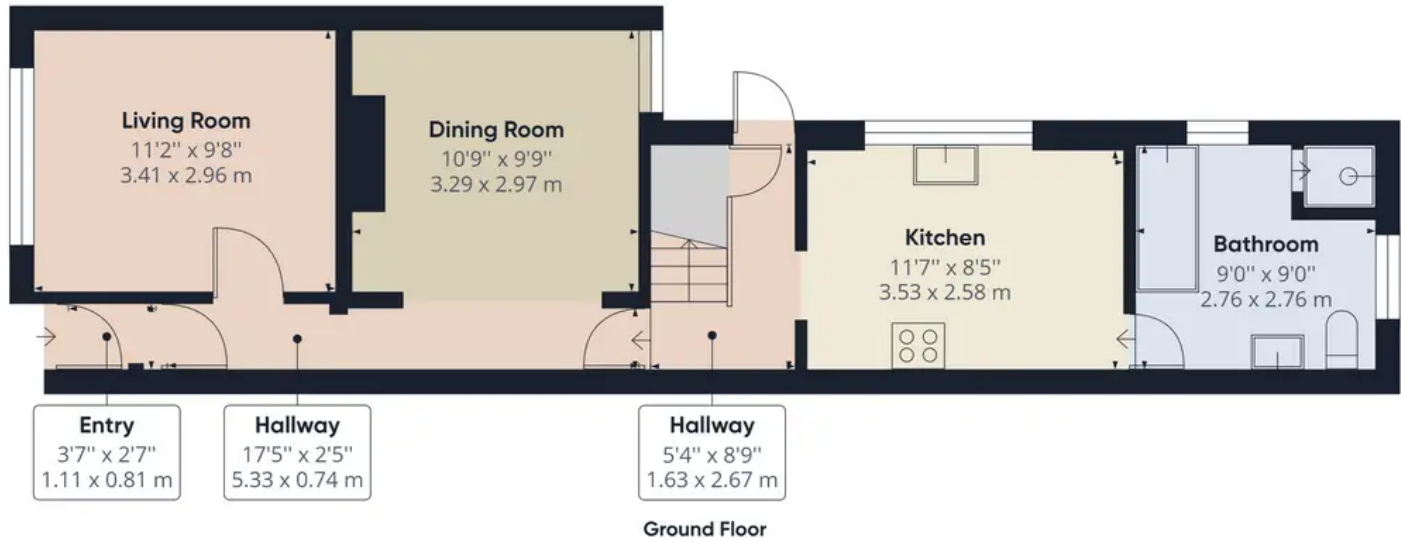
But the real gem of this property is the lovely east-facing garden, complete with a lush lawn area and garden shed. Whether you're a green-fingered enthusiast or simply looking for a spot to soak up the sun, this garden is sure to delight.

Don't miss your chance to make this delightful mid-terraced property your next family home. Contact us today to arrange a viewing!

Council Tax band: B

Tenure: Freehold

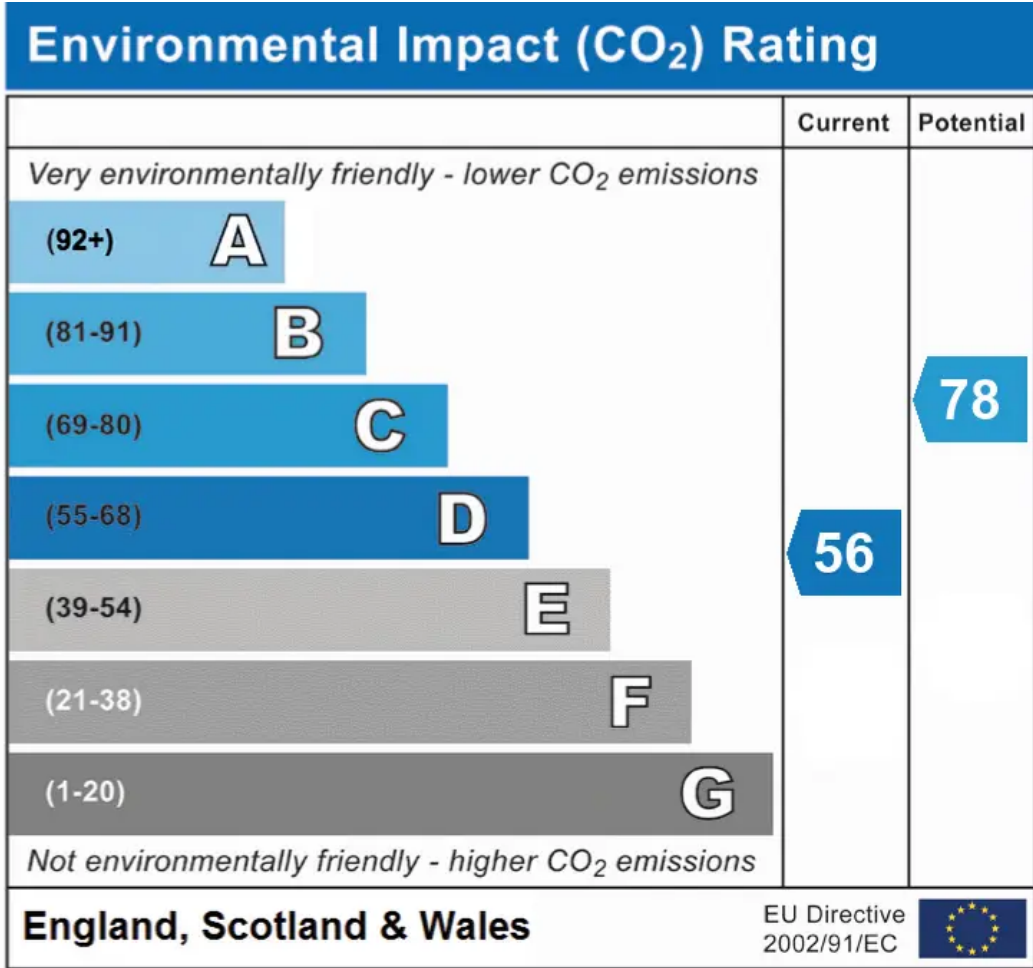
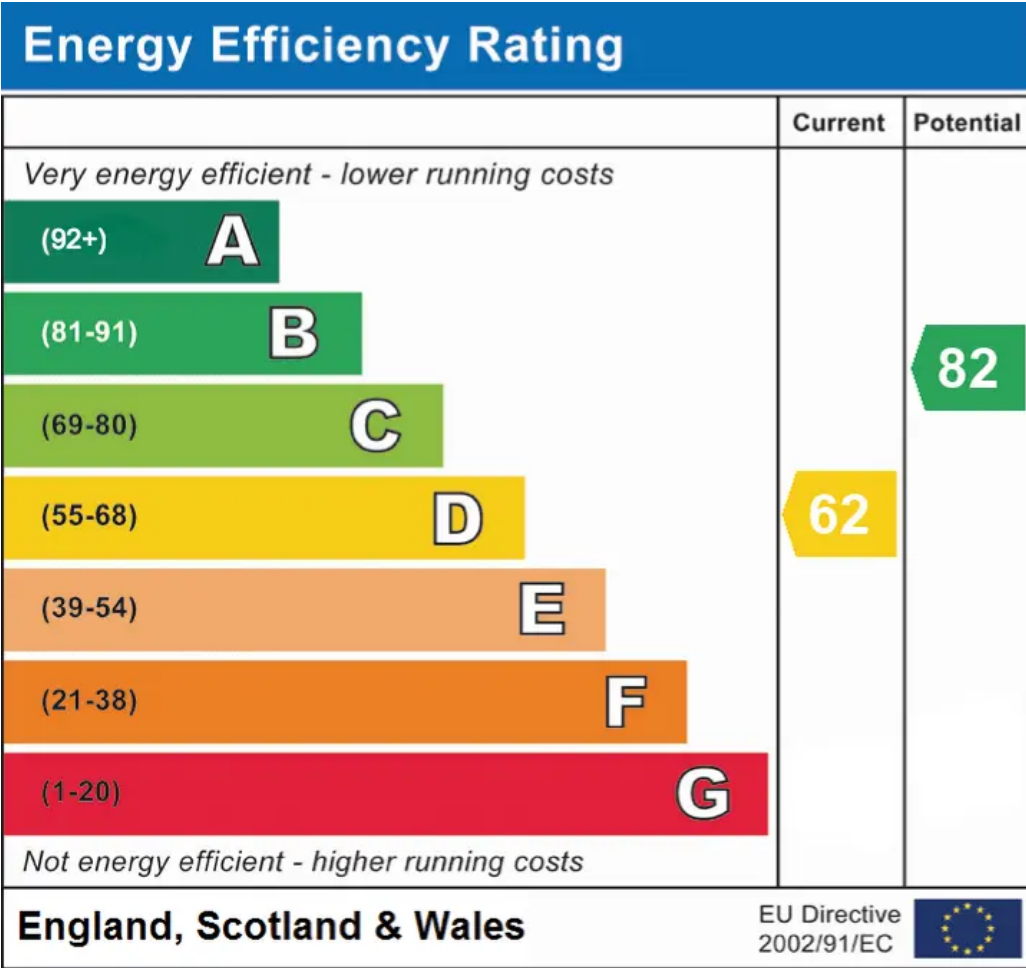




Approximate total area⁽¹⁾
891.51 ft²
82.82 m²

(1) Excluding balconies and terraces

While every attempt has been made to ensure accuracy, all measurements are approximate, not to scale. This floor plan is for illustrative purposes only.



Chinneck Shaw

Bridge House, Milton Road, Portsmouth – PO3 6AN

023 9282 6731

hello@chinneckshaw.co.uk

www.chinneckshaw.co.uk/

Chinneck Shaw, Bridge House, Milton Road, PO3 6AN Consumer Protection from Unfair Trading Regulations 2008: These details are for guidance only and complete accuracy cannot be guaranteed. If there is any point which is of particular importance, verification should be obtained. The do not constitute a contract or part of a contract. All measurements are approximate. No guarantee can be given with regard to planning permissions or fitness for purpose. No apparatus, equipment, fixture or fitting has been tested. Items shown in the photographs are NOT necessarily included. Interested Parties are advised to check availability and make an appointment to view before travelling to see a property.