



HINTON & DOWNES
residential

SALES, LETTINGS & MANAGEMENT

Hampden Road

Harrow Weald HA3 5PR

- Three bedroom
- Semi detached
- Off street parking
- Good location

Asking Price Of **£475,000**

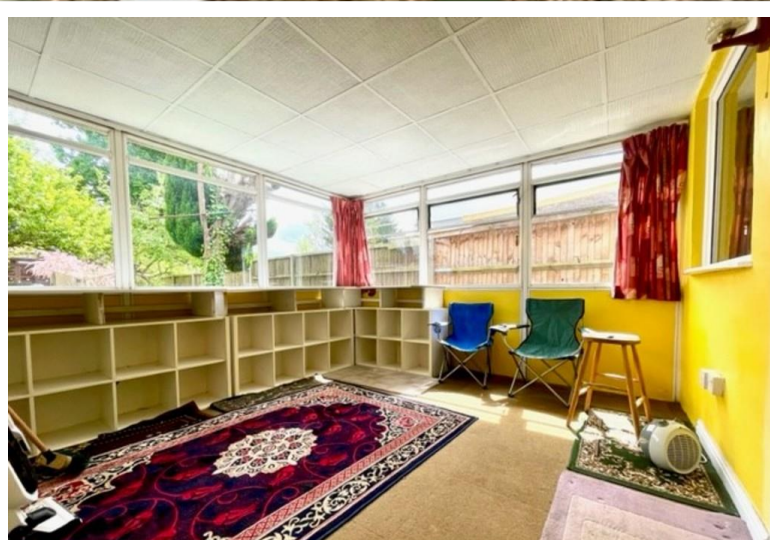
EPC Rating 'TBC'





Property Description

A THREE BEDROOM SEMI-DETACHED HOUSE WITH OFF STREET PARKING available on a popular residential road close to local amenities and transport. On the ground floor there is a front reception room which is open to the large kitchen area with access to the downstairs shower room. Access to the conservatory is from the kitchen, the conservatory leads out onto a large and well maintained garden. On the first floor there are three bedrooms, master with space for a walk in wardrobe as well as fitted wardrobes, a second double with fitted wardrobes and a good sized single room. The property benefits from gas central heating and double glazed windows, modernisation is required internally. Available with no upper chain, internal inspection highly advised.







HAMPDEN ROAD
HARROW WEALD HA3



GROUND FLOOR

FIRST FLOOR

APPROX. GROSS INTERNAL FLOOR AREA 658.53 SQ. FT / 61.18 SQ. M

APPROX. GROSS INTERNAL FLOOR AREA INCLUDING THE CONSERVATORY 812.24 SQ. FT / 75.46 SQ. M

WHILST EVERY ATTEMPT HAS BEEN MADE TO ENSURE THE ACCURACY OF THE FLOOR PLAN CONTAINED HERE, MEASUREMENTS OF DOORS, WINDOWS, ROOMS AND ANY OTHER ITEMS ARE APPROXIMATE AND NO RESPONSIBILITY IS TAKEN FOR ANY ERROR, OMISSION, OR MIS-STATEMENT. THIS PLAN IS FOR ILLUSTRATIVE PURPOSES ONLY AND SHOULD BE USED AS SUCH, BY ANY PROSPECTIVE PURCHASER. FLOOR PLANS ARE NOT DONE TO "SCALE".

399 High Road
Harrow
Middlesex
HA3 6EL

www.hintonanddownes.co.uk
sales@hintonanddownes.com
0208 861 1066

Agents Note: Whilst every care has been taken to prepare these sales particulars, they are for guidance purposes only. All measurements are approximate are for general guidance purposes only and whilst every care has been taken to ensure their accuracy, they should not be relied upon and potential buyers are advised to recheck the measurements