

3 bedroom semi-detached house close to local schools and Littlehaven train station.

Fabulous family home in a quiet cul-de-sac close to local shops, schools and Littlehaven train station.

Spacious accommodation comprising an open plan sitting/dining room with glazed doors onto the south east facing garden. Just off the dining area is a fitted kitchen overlooking the garden. On the 1st floor all the bedrooms are surprisingly spacious, there is also a bathroom with a white suite and an airing cupboard. To the rear there is a sunny south facing garden, to the front a single garage and drive with a mature hedge.

Viewing highly recommended.



Council tax band D

Gas warm air heating

EPC awaited

GUIDE PRICE

£400,000



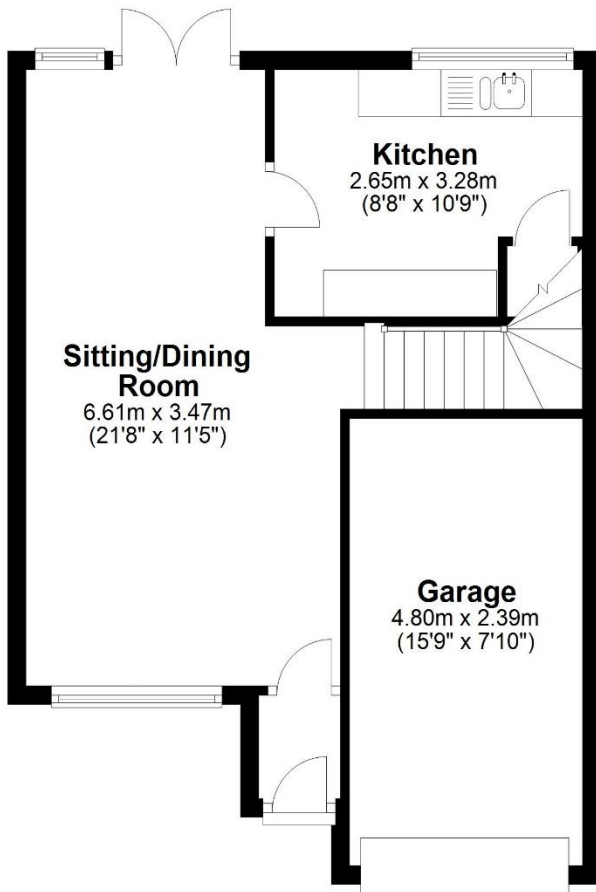
15 Bluebell Close, Horsham, West Sussex, RH12 5WB



- 3 bedrooms and 1 bathroom.
- Open plan sitting/dining room with double doors onto the south facing garden.
- Entrance porch.
- Fitted kitchen.
- Bathroom with white suite.
- Gas warm air central heating.
- Single garage and drive
- Quiet location

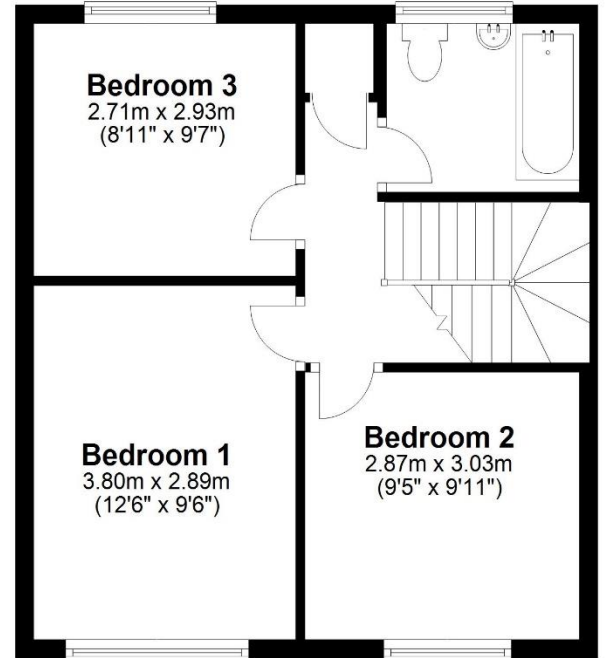
Ground Floor

Approx. 46.4 sq. metres (499.7 sq. feet)



First Floor

Approx. 39.8 sq. metres (428.5 sq. feet)



Total area: approx. 86.2 sq. metres (928.2 sq. feet)

Produced by Lewis White, not to scale and indicative only
Plan produced using PlanUp.

Council tax band: D

EPC Rating: Awaited



PRS Property Redress Scheme

lewis white