



HARRISON  
Sales &  
Lettings  
HARDEN

Union Street, Stow On The Wold, GL54 1BU

Cheltenham

£425,000



A wonderfully quaint Cotswold cottage located within walking distance of the popular market square of Stow on the Wold.

This Cotswold stone cottage boasts character and original features throughout. The accommodation comprises of sitting room, kitchen, conservatory, downstairs shower room, two double bedrooms and family bathroom. The property also benefits from an enclosed rear garden. Available with no onward chain this is an ideal home, investment or bolt hole.

EPC Rating: D

Council Tax Band: C

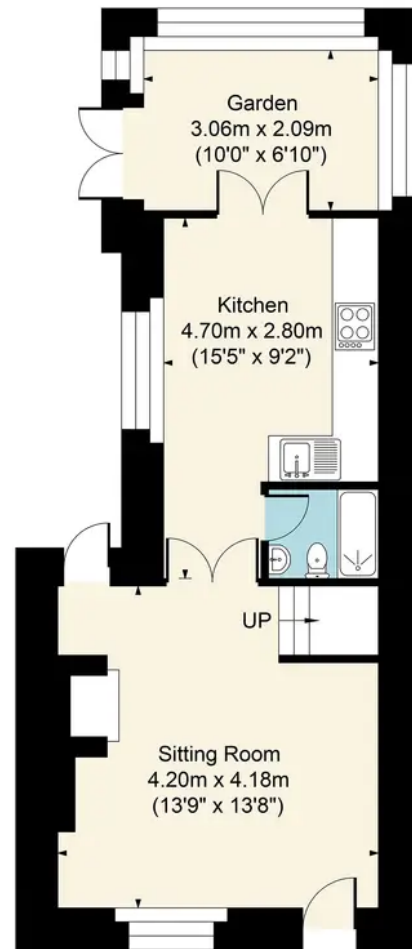
Tenure: We understand the property to be **Freehold**. Potential purchasers should obtain confirmation of this from their solicitor prior to exchange of contracts.

Stow on the Wold enjoys an elevated position in the centre of the north Cotswolds, offering a wide range of individual shops arranged around a central square composed almost entirely of old Cotswold stone properties, with several public houses, a library, police station and church. There is a primary school situated on the edge of the town and a wider range of amenities can be found within easy reach, including Tesco store and main line train station at Moreton in Marsh and Kingham.

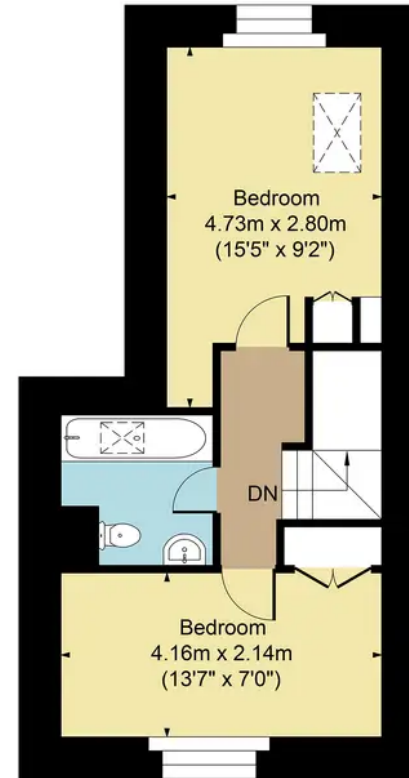




**Robert Cottage, Union Street Stow GL54 1BU**  
Main House Approx. Gross Internal Area:- 68.67 sq.m. 739 sq.ft.



Ground Floor



First Floor

FOR ILLUSTRATIVE PURPOSES ONLY-NOT TO SCALE  
The position & size of doors, windows, appliances and other features are approximate only.  
□ □ □ Denotes restricted head height  
[www.dmlphotography.co.uk](http://www.dmlphotography.co.uk)