



CURZON PARK NORTH

Apartment 1





Luxury Living

Located on one of Chester's most prestigious and sought-after roads, hidden behind secure electric gates and mature trees. Step inside this elegant apartment on the top floor of this attractive Grade II listed building. Four bedrooms, two with en suite bathrooms, two delightful reception rooms and a kitchen diner leading to a roof terrace. Spectacular views from the lounge and one of the bedrooms.

The gates open to access the private gravelled parking area at this attractive listed building. Enter through the ornate front door and make your way up the stairs, bathed in natural light from the skylight above.

The sitting room is a lovely sunny room with dual aspect windows to take in the full breadth of the views across the countryside to the Chester skyline. Oak flooring adorns the floor, and a modern fireplace keeps the chill off on cooler nights. This room has the most outstanding views over to the River Dee and the Chester racecourse, with the city skyline in the distance.





Dine & Unwind

The kitchen diner is a lovely room with oak flooring and a range of kitchen units topped with granite. There is a space for a washing machine, tumble dryer, and an American-style fridge freezer. Integrated appliances include a Smeg oven and 5 burner gas hob with extractor fan, an Atag microwave and an Osbourne Champagne chiller fridge. Everything you could need for preparing food for the household. There is a breakfast bar for when you just want to catch a quick bite and plenty of room for a more formal dining seating area. French doors open up to the tiled roof terrace. This is a beautiful place to enjoy an early morning coffee or an evening G&T on a warm day.

The bedrooms are tastefully decorated and have a sophisticated feel. The principal bedroom has fitted wardrobes and a dressing table, an en suite shower room with a large walk-in shower, and a Jack and Jill hand basin.

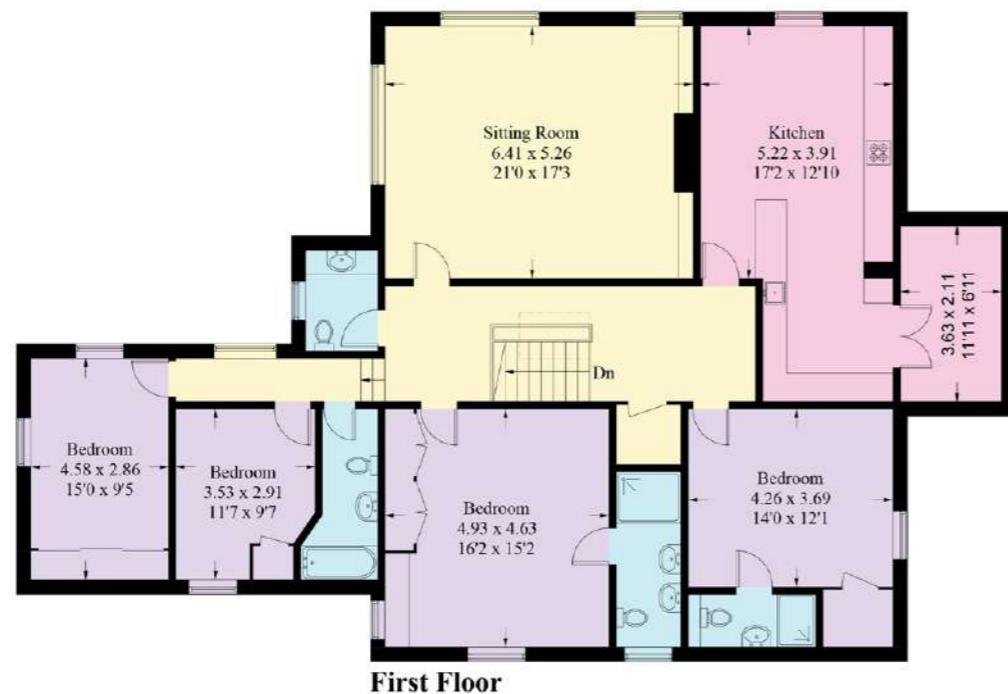
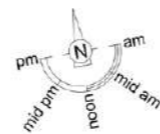
The second bedroom has a built-in wardrobe and an en suite shower room with a walk-in shower and modern glass hand basin. There are 2 further bedrooms and a house bathroom with a bath and shower above.



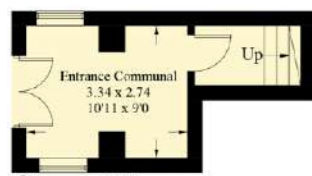
2 CURZON PARK NORTH

Apartment 1

Approximate Gross Internal Area = 197 sq m / 2127 sq ft



First Floor



Ground Floor

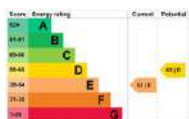


Illustration for identification purposes only, measurements are approximate, not to scale. floorplansUsketch.com © (1D953815)

Finer Details

- Grade II listed Georgian Building
- Roof terrace
- Secure electric gates
- Sought after prestigious location

Out & About

Curzon Park North is a prestigious location, with the banks of the River Dee on the doorstep. A walk along the river is there for you to enjoy morning, noon and night, with nature and wildlife in abundance. Head across the bridge, and you can find yourself in Chester, with all the delights that Chester City can offer. Whether you are looking to head out for a day of retail therapy or a quiet coffee, Chester has everything to offer, from culture and entertainment to coffee shops and restaurants.



2
CURZON PARK NORTH
Apartment 1

presented by



/// WHAT3WORDS: slips.player.hype

To view Apt 1, 2 Curzon Park North
Call John
on 01244 313 900
Email: john@curransunique.co.uk

18 Grosvenor Street, Chester CH1 2DD
www.curransunique.co.uk



SCAN ME TO
BOOK A VIEWING