



**SALES**

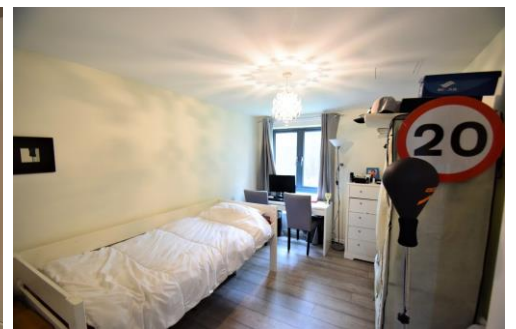
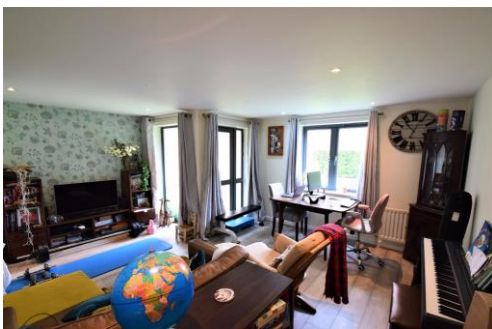
**LETTINGS**

**MANAGEMENT**

[chiswick@tatepartnership.co.uk](mailto:chiswick@tatepartnership.co.uk)

**020 8996 0000**

**TATEPARTNERSHIP.CO.UK**



**Charlotte Court, W6**

**£2,250 pcm**

A sizeable 771 sq/ft two Bed Apartment, set in this attractive Apartment Complex. Being on the Ground Floor, you have direct access from the Living/Dining Room onto communal Gardens. Located moments from Stamford Brook station. The accommodation comprises; entrance hall, dual aspect living/dining room with Patio Door leading directly onto communal Gardens, separate kitchen/breakfast room, two good double bedrooms and a family bathroom. The development has private parking (by application and FCFS). Located just off Goldhawk Road, Charlotte Court offers easy access to Stamford Brook station (zone 2) and the numerous amenities offered on Chiswick High Road and King Street. Available Early June. Unfurnished.

# Charlotte Court, W6

## Floor Plan

Approximate gross internal area  
72 sq m / 771 sq ft

### Charlotte Court

Approximate Gross Internal Area = 71.6 sq m / 771 sq ft

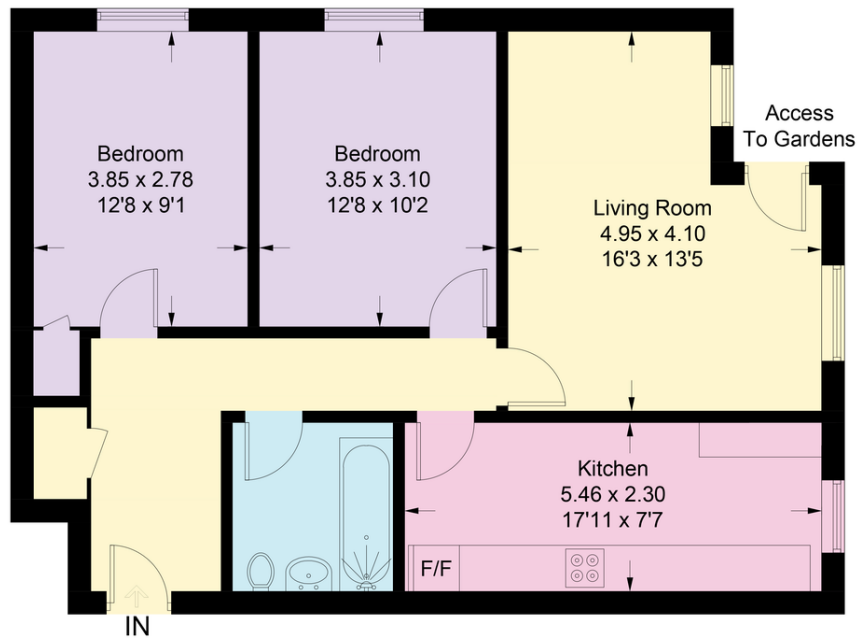


Illustration for identification purposes only, measurements are approximate, not to scale. floorplansUsketch.com © (ID961890)

## EPC

