



3 Bedroom Semi-Detached **Guide Price £280,000**

15 Purcell Road, Redhouse , Swindon, Wiltshire, SN25 2PF

mcfarlane
property.com

3 Bedroom Semi-Detached Purcell Road, North Swindon

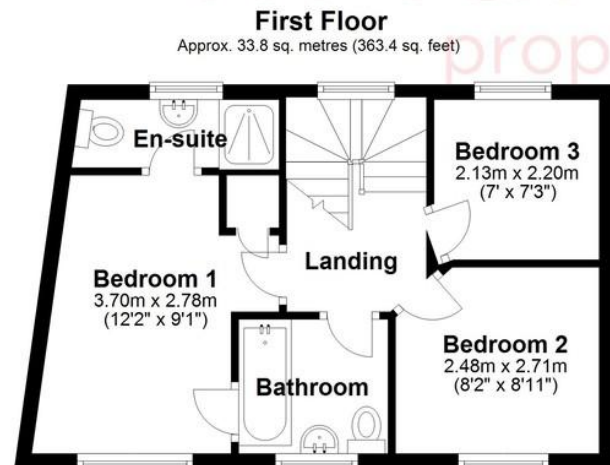
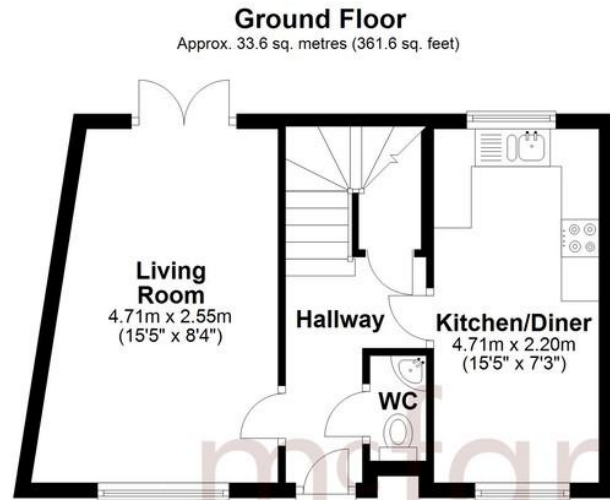
- IMMACULATELY PRESENTED THROUGHOUT
- MASTER WITH ENSUITE
- POPULAR LOCATION
- DRIVEWAY PARKING & GARAGE

McFarlane are delighted to offer this immaculate three bedroom semi-detached family home to the market, positioned in the popular location of Rehouse, North Swindon the spacious and beautifully kept accommodation comprises; Spacious entrance hallway, downstairs cloakroom, impressive living room with French doors leading to the garden and a fabulous kitchen / dining room. Upstairs you will find three generous bedrooms, en-suite to master and a beautifully modern re - fitted family bathroom suite. Further attributes include uPVC double glazing and gas central heating. Externally the home offers a low maintenance rear garden, driveway parking and single garage. Viewings are highly recommended.





We where you LIVE



Total area: approx. 81.4 sq. metres (876.2 sq. feet)

Second Floor
Approx. 14.1 sq. metres (151.3 sq. feet)



Our team are friendly, experienced and are all local. They know it better than they do their own living rooms and can help you find what you're looking for because **we love where we live.**

We would be delighted to show you around this property.

Because every home needs a personal touch.

If you would like to view this property then please get in touch.

☎ 01793 296600

✉ swindon@mcfarlaneproperty.com

mcfarlaneproperty.com

mcfarlane
property.com

Cricklade.
102 High Street
Cricklade SN6 6AA
☎ 01793 751044

Marlborough.
106 High Street
Marlborough SN8 1LT
☎ 01672 514380

Old Town.
28-30 Wood Street
Swindon SN1 4AB
☎ 01793 296880

Swindon.
The Village Centre,
Redhouse SN25 2FW
☎ 01793 296600

Agents Note: Whilst every care has been taken to prepare these sales particulars, they are for guidance purposes only. All measurements are approximate are for general guidance purposes only and whilst every care has been taken to ensure their accuracy, they should not be relied upon and potential buyers are advised to recheck the measurements