



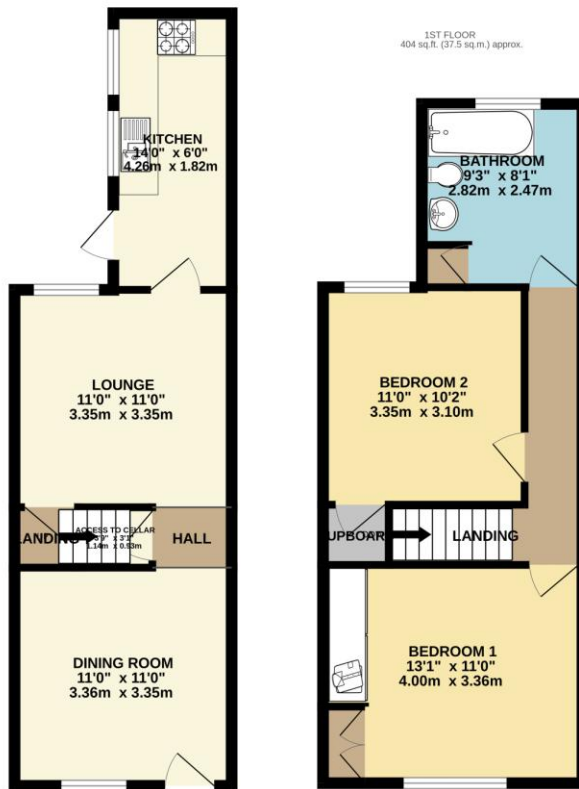
Property Summary

This neatly presented two bedroom mid terrace is located in the highly sought after West End borders of Leicester. The accommodation comprises of entrance to dining room lounge extended Ray kitchen landing to 2 bedrooms and bathroom. Landscaped rear yard. Internal inspection comes highly recommended.



GROUND FLOOR
359 sq.ft. (33.3 sq.m.) approx.

EPC TO FOLLOW....



TOTAL FLOOR AREA: 762 sq.ft. (70.8 sq.m.) approx.

Whilst every attempt has been made to ensure the accuracy of the floorplan contained here, measurements of doors, windows, rooms and any other items are approximate and no responsibility is taken for any error, omission or mis-statement. This plan is for illustrative purposes only and should be used as such by any prospective purchaser. The services, systems and appliances shown have not been tested and no guarantee as to their operability or efficiency can be given.
Made with Metropix ©2023

- Mid Terrace
- Two Bedrooms
- Highly Popular Location
- Extended Kitchen
- Two Double Bedrooms
- Bathroom
- Landscaped Yard
- On Street Parking

phillips george | sales & lettings

Agents Note: Whilst every care has been taken to prepare these sales particulars, they are for guidance purposes only. All measurements are approximate and for general guidance purposes only and whilst every care has been taken to ensure their accuracy, they should not be relied upon and potential buyers are advised to recheck the measurements

🏠 46 Long Street, Wigston, Leicestershire, LE18 2AH

✉ info@phillipsgeorge.co.uk
☎ 0116 216 8178

