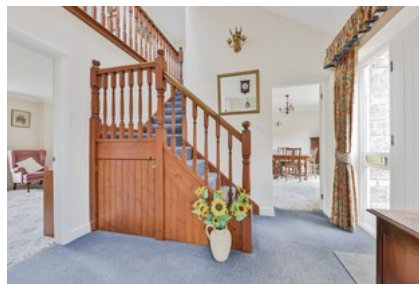




Rise Road, Skirlaugh

INVITING OFFERS BETWEEN £350,000-£375,000



- ✓ Enjoying An Elevated Site Overlooking The Church In The Centre Of The Village
- ✓ Double Garaging
- ✓ Cottage Style Modern Property
- ✓ Freehold
- ✓ Three Double Bedrooms
- ✓ Council Tax Band E
- ✓ Built In The Late 1990's

Guide Price **£350,000**

Bedroom 3 Bathroom 2 Reception 2