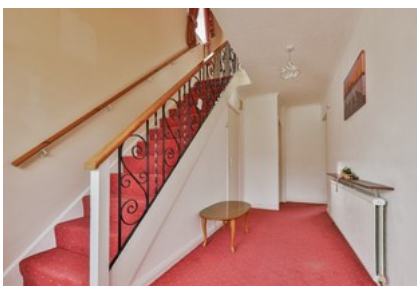




Coltman Avenue, Beverley

INVITING OFFERS BETWEEN £190,000 - £210,000



- ✓ No Chain
- ✓ Very Spacious Three Bedroom Semi
- ✓ Off-street Parking & Garage
- ✓ Conservatory
- ✓ Westerly Facing Garden
- ✓ Freehold
- ✓ Council Tax Band C

Guide Price **£190,000**

Bedroom 3 Bathroom 1 Reception 1