



Palm Tree Cottage

Station Road, Moreton-In-Marsh, Gloucestershire, GL56 0JZ

Guide Price £325,000



From the entrance porch, the hall leads you to the doors to the living room, to the kitchen, and stairs to the first floor. Towards the rear of the living room there is a dining area, with sliding patio doors to the rear garden. From the hall is the door to the kitchen with a range of fitted cupboards and drawers and stainless steel sink unit, from the kitchen is a doorway through to the utility room with further door to the rear garden.

Upstairs, the main bedroom has an en-suite bathroom, and there are two further bedrooms and a bathroom. There are gardens to the front and rear, plus garage and parking for two cars.

NO ONWARD CHAIN.

- **EPC: C**
- **Council Tax: D**
- **Tenure: Freehold**

Moreton in Marsh is a north Cotswold town offering a broad range of local amenities, with library, post office, primary school, North Cotswold Hospital, sports facilities and swimming pool open to the public at the renowned Fire College, pubs, hotels and many specialist shops. Moreton in Marsh is also host of the largest street market in the Cotswolds which runs every Tuesday, is a stones throw away from Batsford Arboretum and Gardens and the Cotswold Falconry Centre, with the award winning Daylesford Organic Farm and Stores just around the corner. Moreton In Marsh also has its train station, with a direct line running regularly between Worcester and London Paddington.



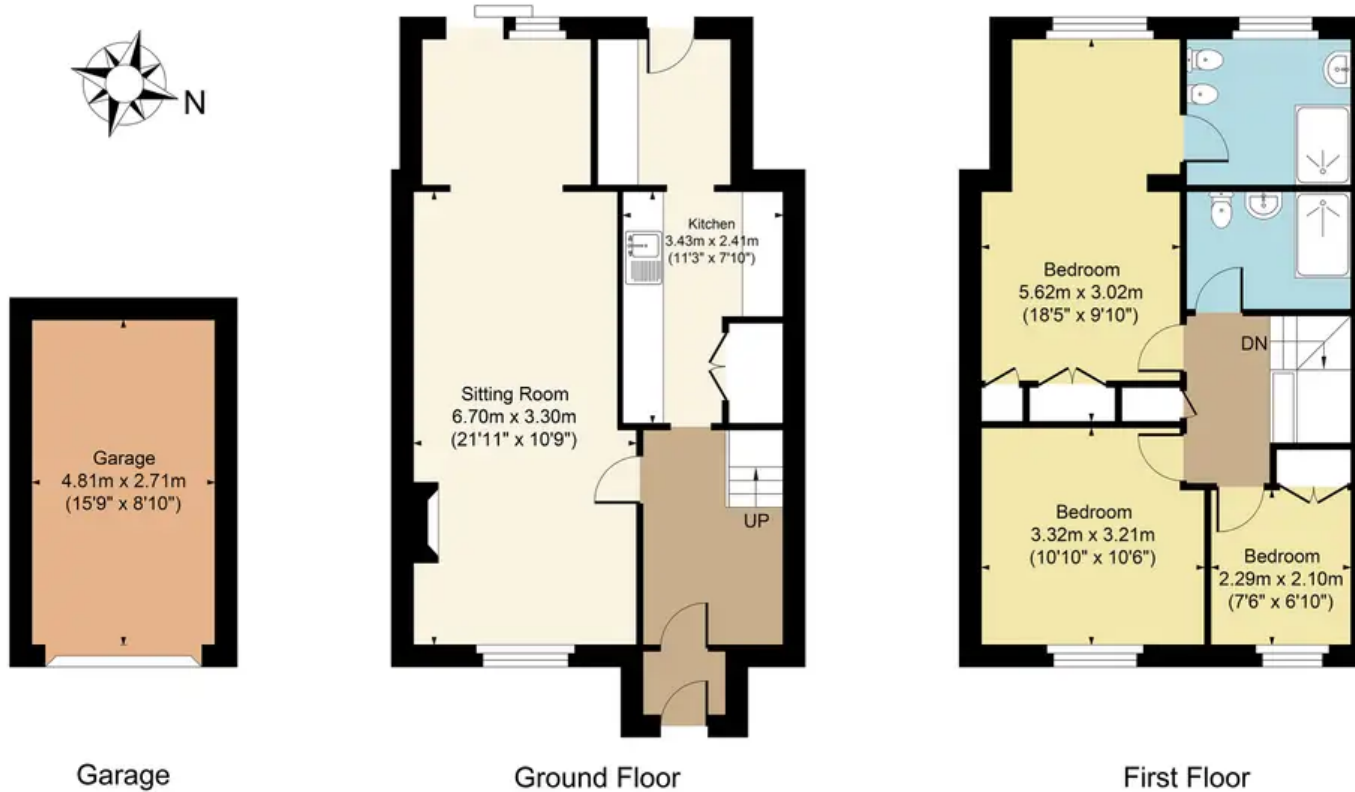


Palm Tree Cottage, Station Road, Moreton, GL56 0JZ

Main House Approx. Gross Internal Area:- 96.35 sq.m. 1037sq.ft.

Garage Approx. Gross Area:- 13.04 sq.m. 140 sq.ft.

Total Approx. Gross Area:- 109.39 sq.m. 1177 sq.ft.



FOR ILLUSTRATIVE PURPOSES ONLY-NOT TO SCALE
The position & size of doors, windows, appliances and other features are approximate only.
□ □ □ Denotes restricted head height
www.dmlphotography.co.uk