



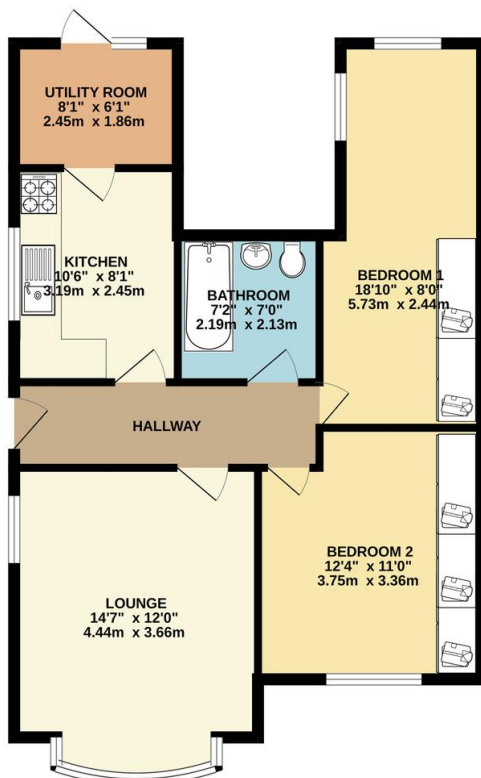
FOR SALE

2 Bed Semi-Detached Bungalow in Lowcroft Drive, Oadby LE2 5UD
£230,000

Having recently been redecorated and with further improvements this neatly presented two bedroom extended semi detached bungalow is offered with no upward chain and is situated in the highly desirable location of Oadby. The accommodation comprises of main entrance hall, lounge, fitted kitchen, utility room, bathroom, two bedrooms, front and rear gardens and ample car standing space. Internal inspection comes highly recommended.



GROUND FLOOR
689 sq.ft. (64.0 sq.m.) approx.



TOTAL FLOOR AREA: 689 sq.ft. (64.0 sq.m.) approx.

Whilst every attempt has been made to ensure the accuracy of the floorplan contained here, measurements of doors, windows, rooms and any other items are approximate and no responsibility is taken for any error, omission or mis-statement. This plan is for illustrative purposes only and should be used as such by any prospective purchaser. The services, systems and appliances shown have not been tested and no guarantee as to their operability or efficiency can be given.
Made with Metropix ©2023

Agents Note: Whilst every care has been taken to prepare these sales particulars, they are for guidance purposes only. All measurements are approximate and for general guidance purposes only and whilst every care has been taken to ensure their accuracy, they should not be relied upon and potential buyers are advised to recheck the measurements.

Energy Efficiency Rating		Current	Potential
Very energy efficient - lower running costs			
(92-100)	A		
(81-91)	B		
(69-80)	C		
(55-68)	D		
(39-54)	E		
(21-38)	F		
(1-20)	G		
Not energy efficient - higher running costs			
England, Scotland & Wales			
			EU Directive 2002/91/EC

- Semi Detached
- Extended Bungalow
- Two Double Bedroom
- Highly Desirable Location
- Garage And Carport
- Driveway
- Utility Room
- Fitted Kitchen And Bathroom

