



3 Station Road, Stoke D'abernon
£3,750 PCM



3 Station Road

Stoke D'Abernon, Cobham

New to the market and ideally located moments from Stoke d'Abernon Station, Yew Tree Cottage is a beautiful must see period family home.

The house offers a modern open plan living space with cosy log burner for the winter months and elegant kitchen with dining area and central island. A conservatory currently used as a playroom comes off the kitchen and there is a downstairs WC and utility.

Upstairs is full of charm; the principal bedroom is fitted with wardrobes and there are two further bedrooms and family bathroom. An additional room provides more storage and a place to work in peace.

Externally you have beautiful garden with lawn area, patio and thoughtfully designed planting, parking, a garage currently used a gym.

Yew Tree Cottage is a short walk from the station and local shops of Stoke d'Abernon and a little further into Cobham town centre with its array of cafe's, shops, restaurants.

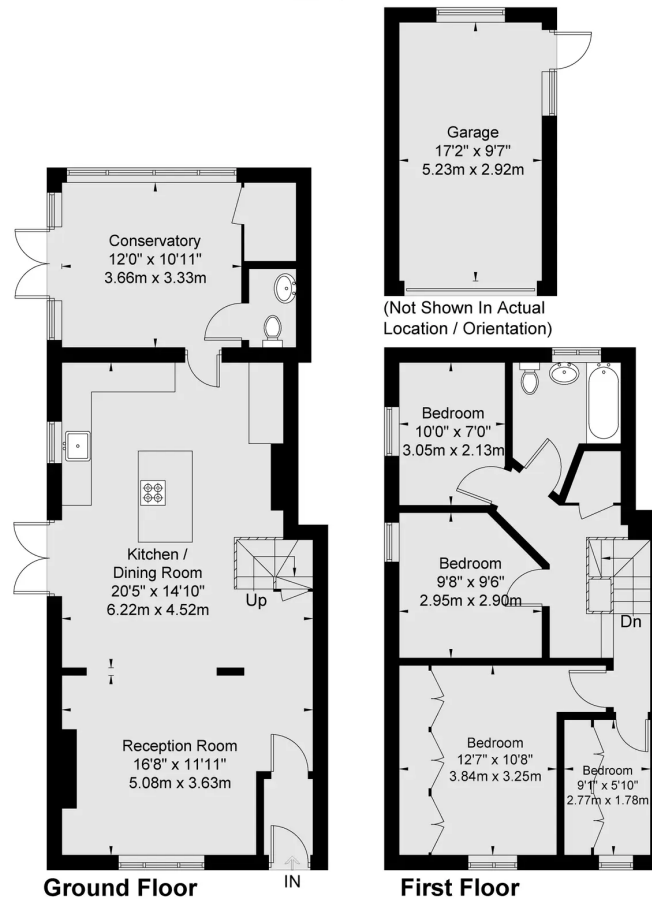
Council Tax band: E





Station Road

Approx Gross Internal Area
Ground Floor = 66.2 Sq m 712 Sq Ft
First Floor = 48.9 Sq m 526 Sq Ft
Garage = 15.2 Sq m 163 Sq Ft
Total = 130.3 Sq m / 1401 Sq Ft



Viewmedia @ 2022
Viewmedia.co.uk

Whilst every attempt has been made to ensure the accuracy of this floor plan, measurements of doors, windows and rooms are approximate and no responsibility is taken for any error or omission. This illustration is for identification purpose only. Measured and drawn accordance with RICS guidelines. Not drawn to scale, unless stated. Dimensions shown are to the nearest 3" and are to the points indicated by the arrow heads.

Grosvenor Billinghamurst – Cobham

Grosvenor Billinghamurst, 8 High Street – KT11 3DY

01932 588288 • cobham@grosvenorb.co.uk • www.grosvenorb.co.uk/