

GROUND FLOOR

MEDINA TERRACE

HOVE · SUSSEX

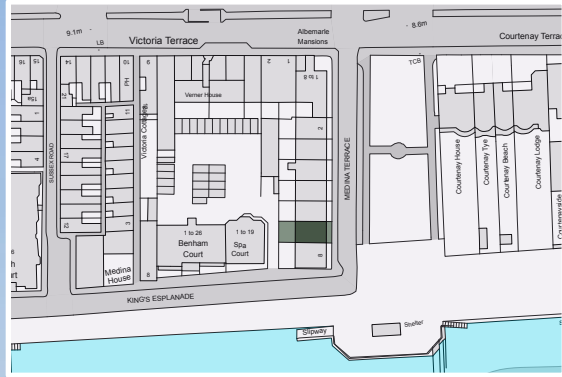




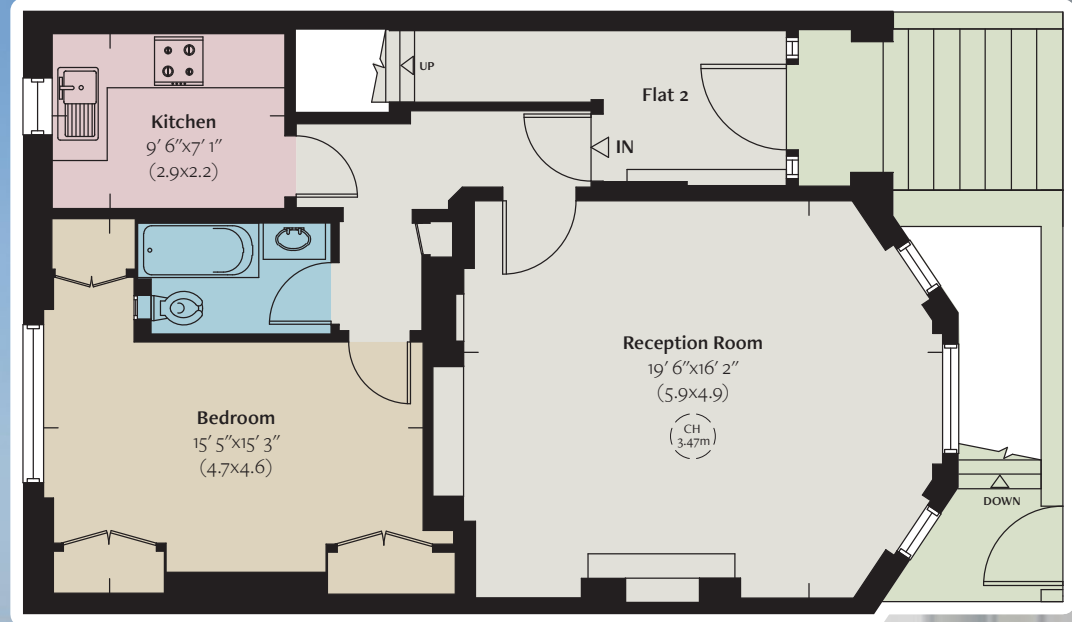
Bright and airy ground floor flat with uninterrupted sea views.

A large one bedroom apartment in an attractive stucco-fronted Grade II listed Regency house overlooking Medina Lawn and with long unimpeded views to the sea and Brighton Pier. Rare location on the beach side of Kingsway.

125 years from 25th March 2004 and a share of freehold
Brighton & Hove City Council
Council Tax band B

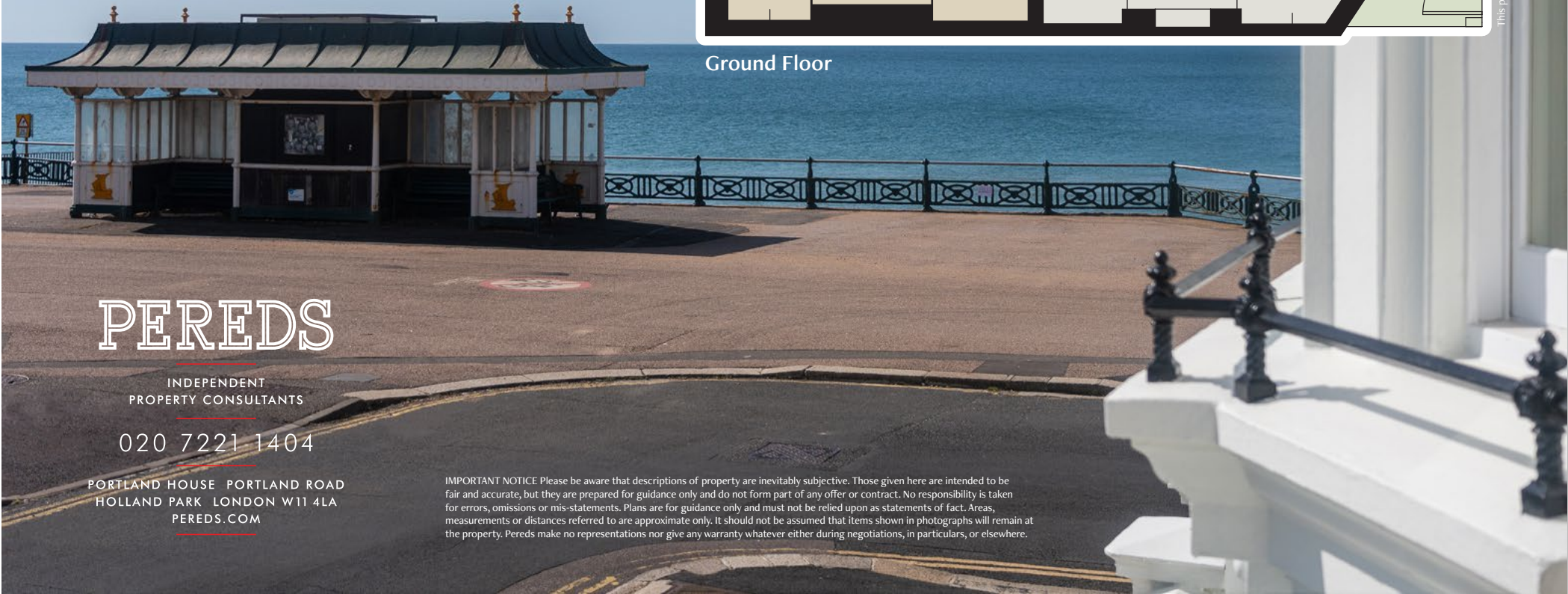


Approximate Gross
Internal Area
673 sq ft
63 sq m



Ground Floor

This plan was supplied to The Brochure by Pereds



PEREDS

INDEPENDENT
PROPERTY CONSULTANTS

020 7221 1404

PORTLAND HOUSE PORTLAND ROAD
HOLLAND PARK LONDON W11 4LA
PEREDS.COM

IMPORTANT NOTICE Please be aware that descriptions of property are inevitably subjective. Those given here are intended to be fair and accurate, but they are prepared for guidance only and do not form part of any offer or contract. No responsibility is taken for errors, omissions or mis-statements. Plans are for guidance only and must not be relied upon as statements of fact. Areas, measurements or distances referred to are approximate only. It should not be assumed that items shown in photographs will remain at the property. Pereds make no representations nor give any warranty whatever either during negotiations, in particulars, or elsewhere.