



Wraysbury

£1,800 PCM

A very well presented three bedroom town house situated in a small select gated development in the heart of this popular Thameside village. The accommodation is arranged over three levels and comprises: entrance hall, lounge, kitchen/breakfast room, two en suite shower rooms, family bathroom, gas fired central heating, double glazed windows, rear garden, integral garage with own driveway. Available now. Unfurnished. Council tax band: E. Energy Rating: D



B.S. Bennett Estate Agents

2 Staines Road, Wraysbury, Staines, Middlesex, TW19 5BS
t: 01784 483839 e: post@bsbennett.co.uk

bsbennett.co.uk

B. S. BENNETT



Deposit:

5 weeks rent which is £2076.00 for this rental. The deposit is used to cover any potential damages. The deposit will be protected by one of the approved schemes.

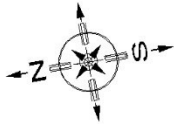
Local Authority:

Royal Borough of Windsor and Maidenhead.

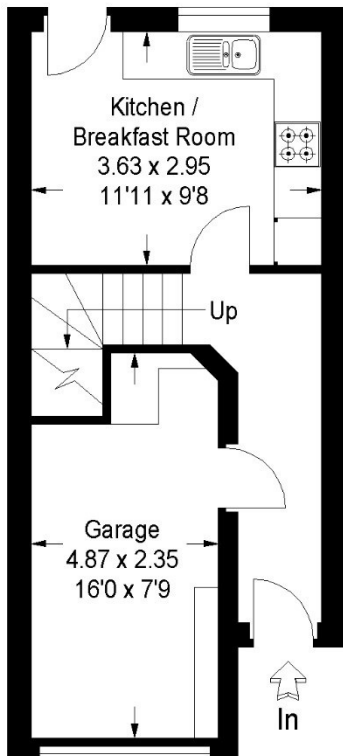
Town Hall, St. Ives Road, Maidenhead, Berkshire, SL6 1RF.

2023/24 Council Tax Band: E £1977.14

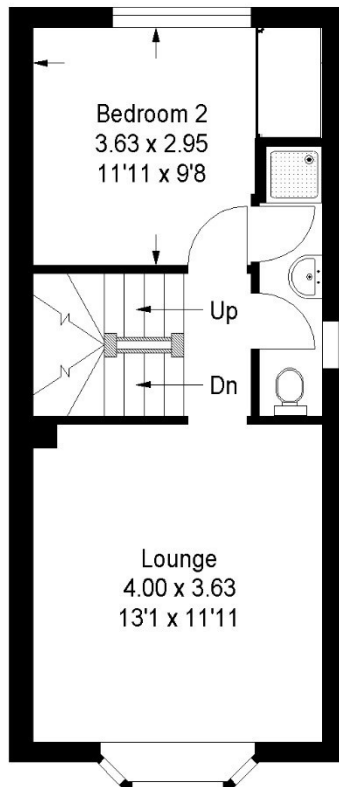
Harcourt, Wraysbury TW19 5DY



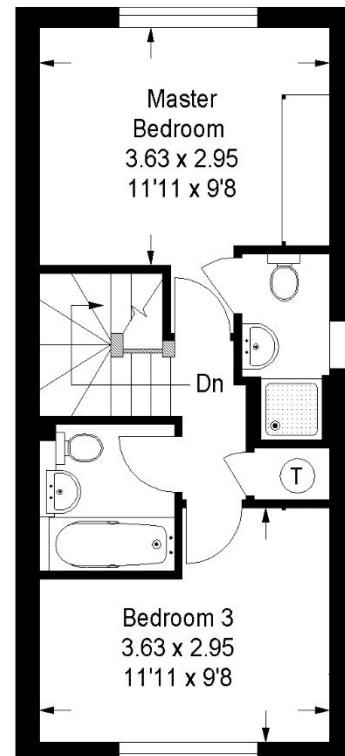
Approximate Gross Internal Area :-
96 sq m / 1035 sq ft



Ground Floor



First Floor



Second Floor

FLOOR PLANS ©

This illustration is for identification purposes only. Measured & drawn in accordance with RICS / PMA guidelines. Not drawn to scale, unless stated. Dimensions shown are to the nearest 7.5 cm / 3" and are through cupboard / wardrobes to wall surfaces where possible or where indicated by arrow heads. Whilst every care is taken in the preparation of this plan, please check all dimensions shapes & compass bearings before making any decisions reliant upon them.