

2 bedroom ground floor flat with gas central heating and double glazing.

Ground floor flat with 2 double bedrooms, south facing sitting/dining room, fitted kitchen, bathroom with white suite, gas central heating and double glazing

The property is located within a pleasant development on a very popular road offering access to both Reigate and Redhill train stations.

Single en bloc garage.

Share of freehold with 945 year lease.

Ground rent £37.50 p/a

Maintenance £1,320 p/a



Council tax band C

Gas central heating

EPC D

GUIDE PRICE

£280,000



1 Highview Court, Wray Common Road, Reigate, RH2 0RZ

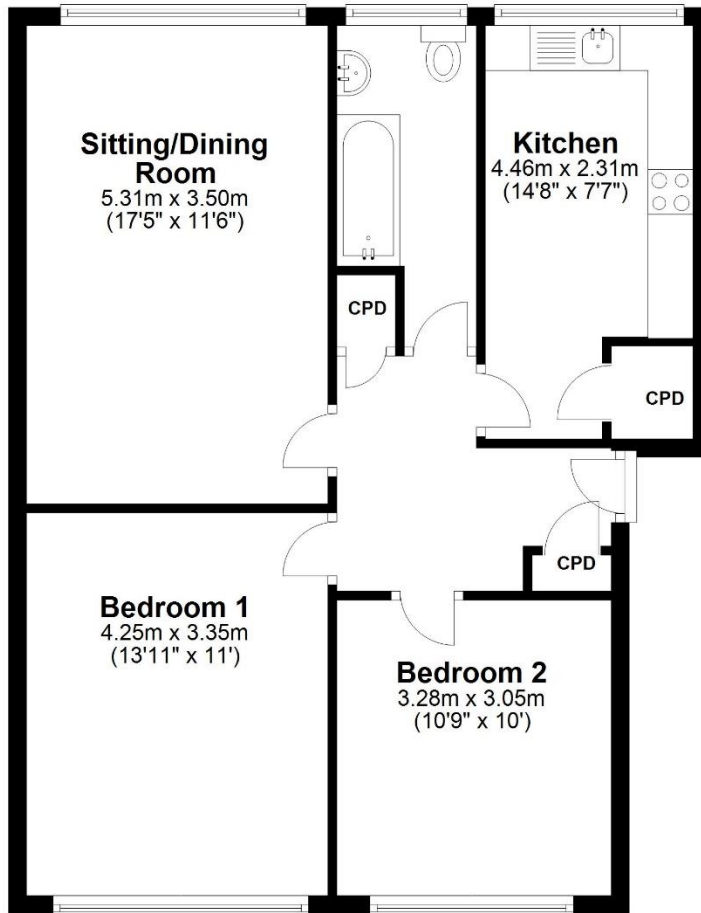


PRS Property Redress Scheme

- 2 double bedrooms.
- Sitting/dining room with ample space to dine and relax.
- Bathroom with white suite.
- Fitted kitchen.
- Several storage cupboards.
- Gas central heating.
- Double glazed.
- Single garage.
- South facing communal garden.
- **CHAIN FREE**

Ground Floor

Approx. 67.4 sq. metres (725.8 sq. feet)



Total area: approx. 67.4 sq. metres (725.8 sq. feet)

Produced by Lewis White, not to scale and indicative only
Plan produced using PlanUp.

Council tax band: C

EPC Rating: D

CHAIN FREE



PRS Property Redress Scheme

lewis white