

SIERRA QUEBEC BRAVO

OVERVIEW

Sierra Quebec Bravo is a transformative re-think of the 210,000 sq ft South Quay Building.

The building has always been home to a diverse mix of occupiers. It has now been re-coded to provide pioneering services, high performance design and a programme of practical benefits – improving the working environment for a dynamic community of successful businesses.

Workspaces range in size from a 15 person office up to single floor plates of 15,498 sq ft, capable of accommodating over 200 workstations.

AMENITIES

Coffee Shop

Gym

Yoga Studio

Outdoor Garden

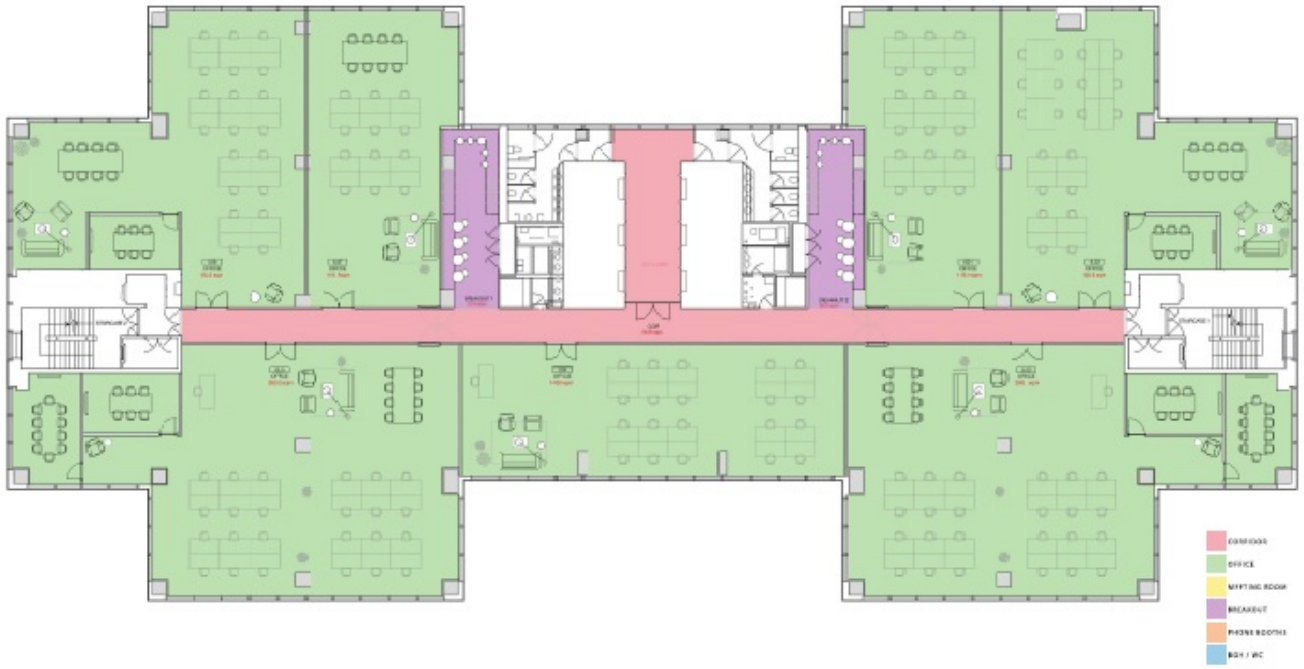
Conference Rooms

Cycle Spaces and Showers

Bespoke and Cat B Solutions

Managed / All-Inclusive Options





TERMS

Flexible by arrangement

SUMMARY

Available Size	1,290 sq ft to 68,539 sq ft
Floor: 3.02	3,649 sq ft
Floor: 4.04	4,044 sq ft
Floor:6.02	1,290 sq ft
Floor: 6.03	1,970 sq ft
Floor: 6.04	2,800 sq ft
Floor: 6.05	1,570 sq ft
Floor:6.06	2,800 sq ft
Floor: 8.01	15,498 sq ft
Floor:9.01	7,598 sq ft
Floor: 10.01	4,015 sq ft
Floor: 12.02	8,024 sq ft
Floor: 13.01	15,281 sq ft
Rent	From £30 to £38.50 per square foot
Business Rates	£11.20 per square foot
Service Charge	£14 per square foot
VAT	Elected

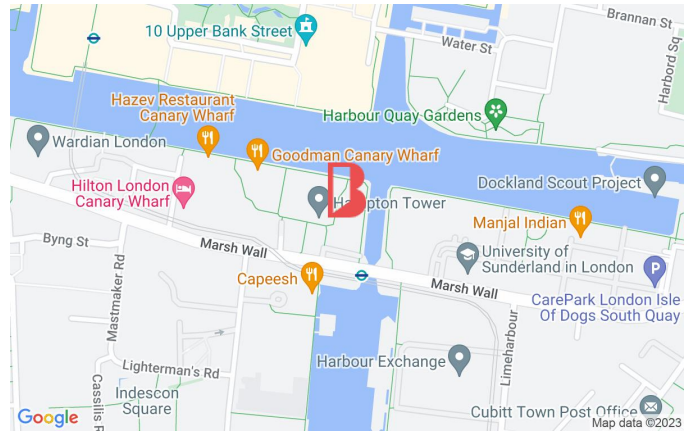
VIEWING & FURTHER INFORMATION

Viewing strictly by prior appointment with the sole agent:

STEPHEN FOSTER

stephen@bureauoffice.co.uk

+44 (0) 7917 841 891



LOCATION

Situated on South Quay, Sierra Quebec Bravo enjoys all the first class transport and amenity benefits associated with neighbouring Canary Wharf.

Transport links have been boosted further with the arrival of the Elizabeth Line, which is a short walk away.