

SQB

OVERVIEW

Sierra Quebec Bravo is a transformative re-think of the 210,000 sq ft South Quay Building.

The building has always been home to a diverse mix of occupiers. It has now been re-coded to provide pioneering services, high performance design and a programme of practical benefits – improving the working environment for a dynamic community of successful businesses.

Workspaces range in size from a 1,290 sq ft up to single floor plates of 15,498 sq ft.

AMENITIES

Coffee Shop

Gym

Yoga Studio

Outdoor Garden

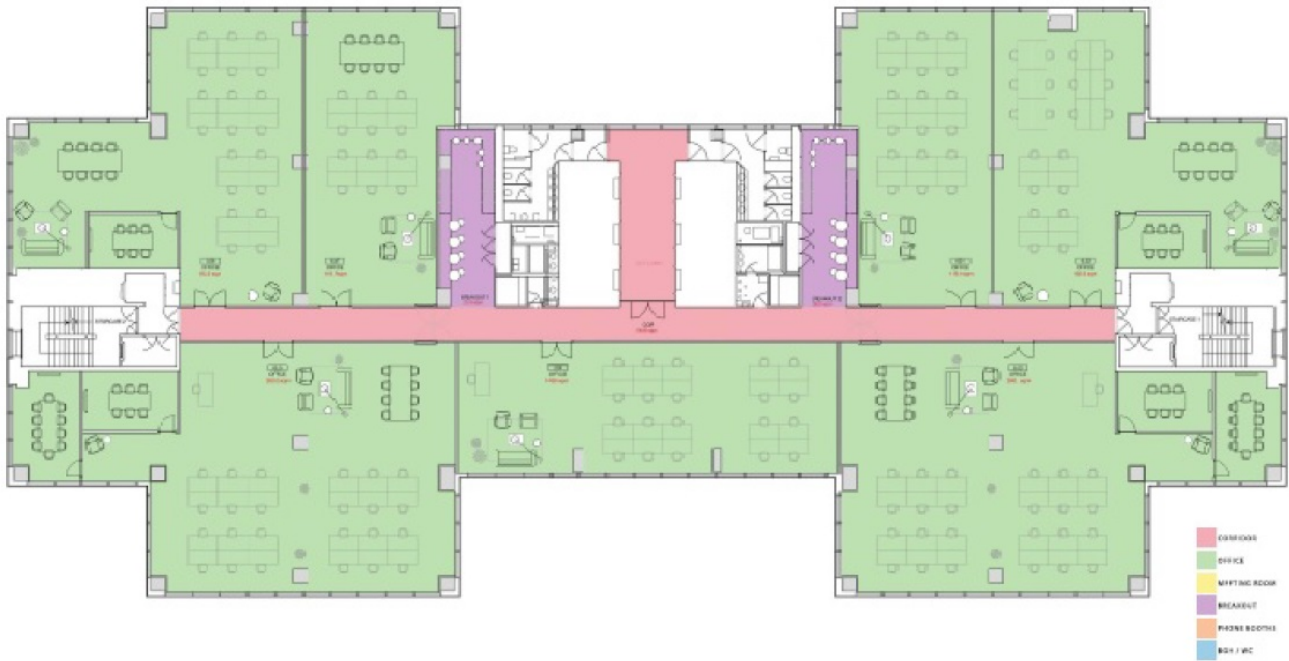
Conference Rooms

Cycle Spaces and Showers

Bespoke and Cat B Solutions

Managed / All-Inclusive Options





TERMS

Flexible by arrangement

SUMMARY

Available Size 1,290 sq ft to 38,937 sq ft

Floor: 13.06 1,660 sq ft

Floor: 13.05 1,615 sq ft

Floor: 13.04 1,970 sq ft

Floor: 13.03 1,290 sq ft

Floor: 13.02 1,290 sq ft

Floor: 13.01 1,970 sq ft

Floor: 12.02 8,024 sq ft

Floor: 9th 7,365 sq ft

Floor: 6.07 1,290 sq ft

Floor: 6.06 1,970 sq ft

Floor: 6.03 2,800 sq ft

Floor: 4.04 4,044 sq ft

Floor: 3.02 3,649 sq ft

Rent £30 - £38 per square foot

Business Rates £11.50 per square foot

Service Charge £15.74 per square foot

VAT Elected

VIEWING & FURTHER INFORMATION

Viewing strictly by prior appointment with the sole agent:

CATHERINE ALEXANDER

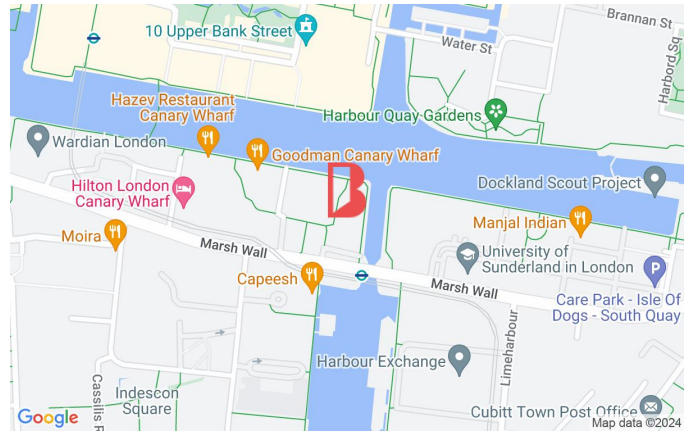
catherine@bureauoffice.co.uk

+44 (0)7811 111600

STEPHEN FOSTER

stephen@bureauoffice.co.uk

+44 (0) 7917 841 891



LOCATION

Situated on South Quay, Sierra Quebec Bravo enjoys all the first class transport and amenity benefits associated with neighbouring Canary Wharf.

Transport links have been boosted further with the arrival of the Elizabeth Line, which is a short walk away.