



- **New Development**
- **Open Plan Kitchen Reception Room**
- **Underfloor Heating**
- **Modern Bathroom**

## **29 Kempton Mews, Kempton Road, London, E6 2BF**

**£1700.00pcm**

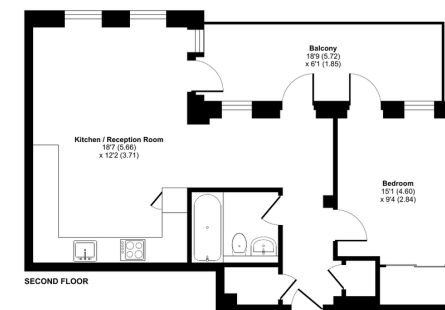
C&N Estate Agents is delighted to bring to you this 1 Bedroom Top Floor Apartment set in this beautiful development on the doorstep of East Ham High Street. Kempton Mews is set within a secure gated development and features 37 beautiful recently built apartments arranged around a communal courtyard in a quiet gated mews.

Comprises of Master Bedroom with Built-In Wardrobes, Modern Bathroom, Open Plan Kitchen/Dinner and Lounge Area leading out to the top floor balcony with elevated views.



### Kempton Mews, London, E6

Approximate Area = 519 sq ft / 48.2 sq m  
For identification only - Not to scale



SECOND FLOOR

Certified Property Measure Floor plan produced in accordance with RICS Property Measurement Standards incorporating International Property Measurement Standards (IPMS Residential) - 01/06/2023. Produced for C&N Estate Agents. REF: 003851

### Energy Efficiency Rating

| Score | Energy rating | Current | Potential |
|-------|---------------|---------|-----------|
| 92+   | A             |         |           |
| 81-91 | B             | 81   B  | 81   B    |
| 69-80 | C             |         |           |
| 55-68 | D             |         |           |
| 39-54 | E             |         |           |
| 21-38 | F             |         |           |
| 1-20  | G             |         |           |

Mail Box Etc. Enfield, 204 Baker Street, Suite 101, Enfield, Middlesex, EN1 3JY

[www.cnestates.uk.com](http://www.cnestates.uk.com)  
[info@cnestates.uk.com](mailto:info@cnestates.uk.com)

Agents Note: Whilst every care has been taken to prepare these sales particulars, they are for guidance purposes only. All measurements are approximate are for general guidance purposes only and whilst every care has been taken to ensure their accuracy, they should not be relied upon and potential buyers are advised to recheck the measurements