



HEYFORD

FIELDS

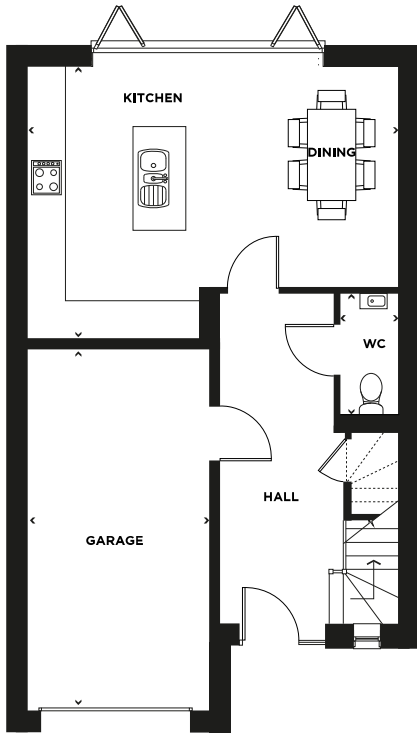


THE ASHTON

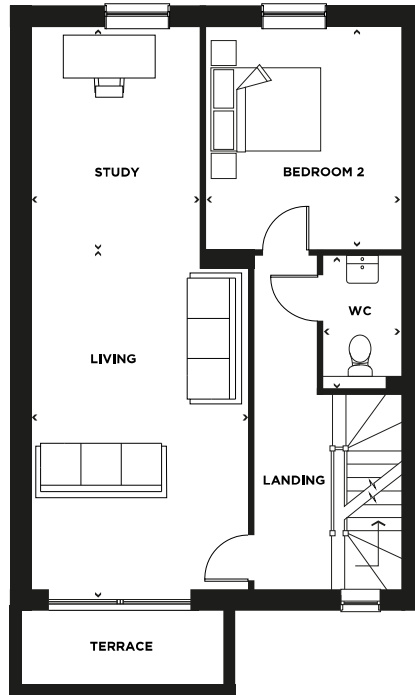
FOUR BEDROOM
THREE STOREY HOME
152m² (1646ft²)

OPEN PLAN KITCHEN AND DINING ROOM WITH
BI-FOLD DOORS LEADING OUT TO A PRIVATE GARDEN |
FOUR DOUBLE BEDROOMS | GARAGE

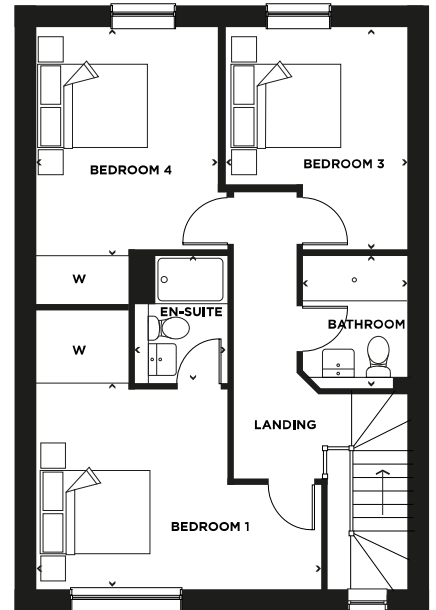
THE ASHTON



GROUND FLOOR



FIRST FLOOR



SECOND FLOOR

ROOM	M	FT	ROOM	M	FT	ROOM	M	FT
KITCHEN/DINING	4.5m X 6.1m	(14'9" X 20'0")	LIVING	5.5m X 3.6m	(18'0" X 11'9")	BEDROOM 1	3.3m X 4.7m	(10'9" X 15'5")
WC	2.0m X 1.0m	(6'6" X 3'3")	BEDROOM 2	3.7m X 3.2m	(12'0" X 10'6")	EN-SUITE	2.1m X 1.5m	(6'11" X 4'11")
GARAGE	6.0m X 3.0m	(19'8" X 9'10")	STUDY	3.7m X 2.8m	(12'1" X 9'2")	BEDROOM 3	3.7m X 3.0m	(12'1" X 9'10")
			WC	2.2m X 1.2m	(7'2" X 3'11")	BEDROOM 4	3.7m X 3.0m	(12'1" X 9'10")
						BATHROOM	2.2m X 1.7m	(7'2" X 5'7")



Protection for new-build home buyers

DISCLAIMER. These floor plans, elevations and development plan are intended to give a general indication of the proposed layouts and of this scheme. Measurements are approximate and subject to change during the process from planning to build completion. We advise you do not use these dimensions for carpet sizes, appliance spacing or furniture. Individual features such as windows and doors may vary. Brick and other build material colours may vary. Heating and electrical layouts are also subject to change during build. Development landscaping is shown for illustrative purposes only. All images and dimensions are not intended to form part of any contract or warranty. Please note that all images are for illustrative purposes only. All dimensions are + or - 50mm and the plans are not shown to scale.

Please consult our Sales Consultants for plot specific details.