



26 Kinghorn Park, Maidenhead, Berkshire SL6 7TX

26 KINGHORN PARK, MAIDENHEAD BERKSHIRE SL6 7TX

PRICE: £1,595,000 FREEHOLD

Occupying a superb location in a quiet cul-de-sac on this sought-after development, set in a fabulous garden enjoying a high degree of privacy and seclusion with far reaching views from the first floor at the rear over acres of green belt land towards Cookham. An impressive beautifully appointed five bedroom detached home which was built by Berkeley Homes Ltd and has been much improved in recent years, featuring a refitted and equipped kitchen/breakfast room and a much improved first floor with quality bathroom suites and a large decked terrace enjoying fabulous views. The property is situated on the northern fringes of town towards Cookham, within a short walk of local shops and within catchment of Furze Platt Secondary School.

*RECEPTION HALL *CLOAKROOM *DUAL-ASPECT SITTING ROOM WITH FEATURE FIREPLACE *SEPARATE DINING ROOM *STUDY *RE-FITTED KITCHEN/BREAKFAST ROOM *TV/FAMILY ROOM *UTILITY ROOM *MASTER BEDROOM WITH EN-SUITE BATHROOM *ACCESS TO LARGE EAVES STORAGE AREA *GUEST SUITE OF BEDROOM WITH RE-FITTED EN-SUITE SHOWER ROOM *THREE FURTHER DOUBLE BEDROOMS *FAMILY BATHROOM *FIRST FLOOR TERRACE TO THE REAR WITH FAR-REACHING VIEWS & STAIRCASE TO GARDENS *DRIVEWAY PARKING *ATTACHED DOUBLE-WIDTH GARAGE *SECLUDED PART-WALLED LANDSCAPED GARDENS *CONCRETE FIRST FLOOR *EPC RATING D



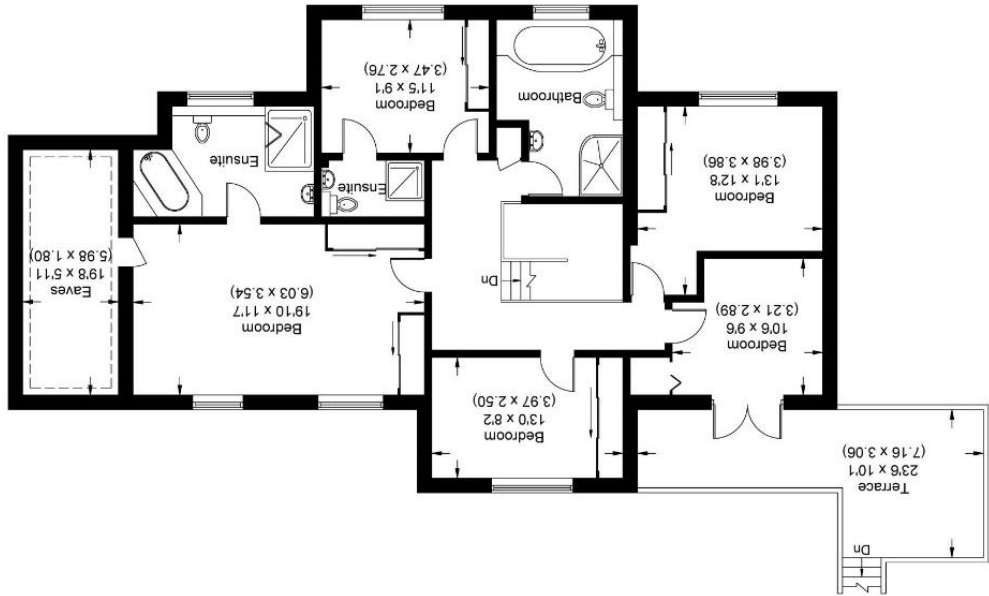


For clarification we wish to inform prospective purchasers that we have prepared these sales particulars as a general guide. We have not carried out a detailed survey nor tested the services, appliances and specific fittings. Room sizes should not be relied upon for carpets, furnishings and appliances. Whilst these particulars are believed to be correct their accuracy is not guaranteed and are given without responsibility. They do not form part of any contract.

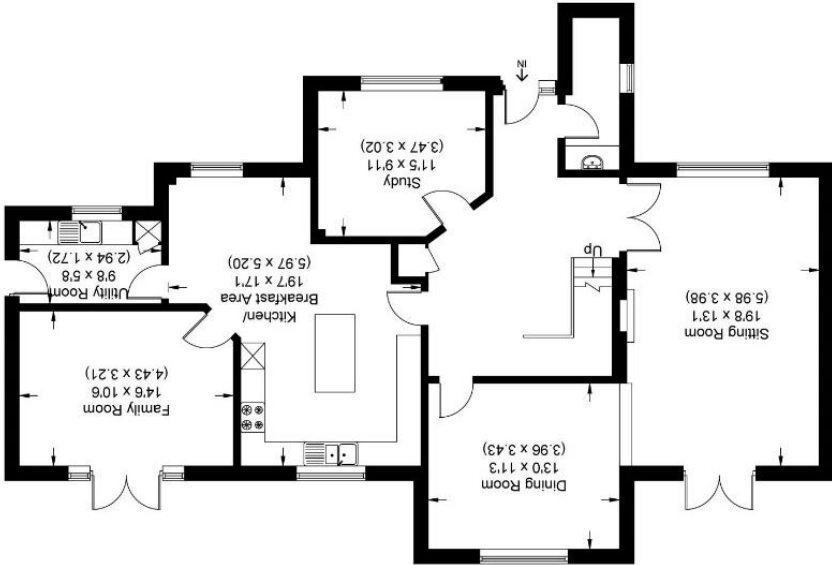
Illustration for identification purposes only, measurements are approximate, not to scale.

Council tax band G – currently £2597.23 per annum

First Floor



Ground Floor



Approximate Gross Internal Area 218.07 sq m / 2347.28 sq ft
 (Excluding Garage & Eaves Storage)
 Garage Area 33.41 sq m / 359.62 sq ft

Kinghorn Park

