

SOLD STC



Bensham Lane, West Croydon

2 Bedrooms, 1 Bathroom, Maisonette

Offers In Excess Of £310,000

MARTIN&CO



Bensham Lane, West Croydon

2 Bedrooms, 1 Bathroom

Offers In Excess Of £310,000

- Spacious Layout
- First-Floor Maisonette
- Desirable West Croydon Location
- Private Garden
- Long Lease

IF ONLY THERE WOULD BE MORE STUNNING PROPERTIES LIKE THIS! 2-bedroom maisonette located in the desirable area of West Croydon. This spacious residence is situated on the first floor, providing a serene and elevated living experience. Boasting a private garden, modern finishes, and a long lease, this property offers a truly exceptional opportunity for home-ownership.

As you step inside, you'll be greeted by a thoughtfully designed layout that maximizes both comfort and functionality. The open and airy living spaces create a warm and inviting atmosphere, perfect for relaxation or entertaining guests. The well-appointed kitchen/dinner features contemporary amenities and ample storage, allowing you to indulge your culinary desires.

The two generously sized bedrooms provide a peaceful retreat, ensuring a restful night's sleep. With an abundance of natural light flooding in, these rooms offer a tranquil ambiance and a serene escape from the outside world. The modern bathroom, fitted with high-quality fixtures, adds a touch of elegance to your daily routine.

One of the highlights of this maisonette is its private garden, an oasis of tranquillity in the heart of the city. Whether you wish to unwind with a book, enjoy alfresco dining, or cultivate your green thumb, this outdoor space offers endless possibilities for relaxation and recreation.

Situated in West Croydon, this location offers a wealth of amenities and conveniences. From local shops and eateries to excellent transport links, everything you need is within easy reach. Immerse yourself in the vibrant community, explore nearby parks, or venture into central London, all while enjoying the comfort and tranquillity of your own home.





This maisonette comes with a long lease, ensuring stability and security for years to come. Its modern finish and attention to detail make it a truly remarkable residence, ready for you to move in and make it your own.

Don't miss this opportunity to own a spacious 2-bedroom maisonette with a private garden in the sought-after West Croydon location. Contact us today to arrange a viewing and embark on a journey towards your dream home.



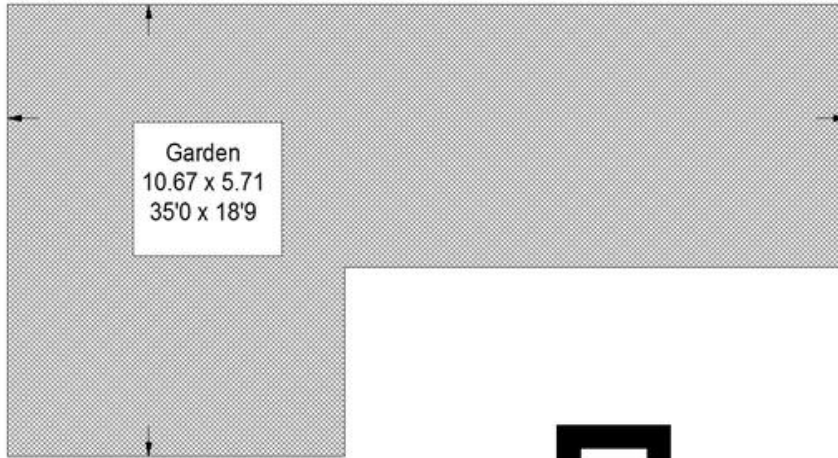


%epcGraph_c_1_441%

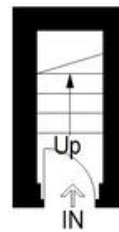


Bensham Lane, CR0

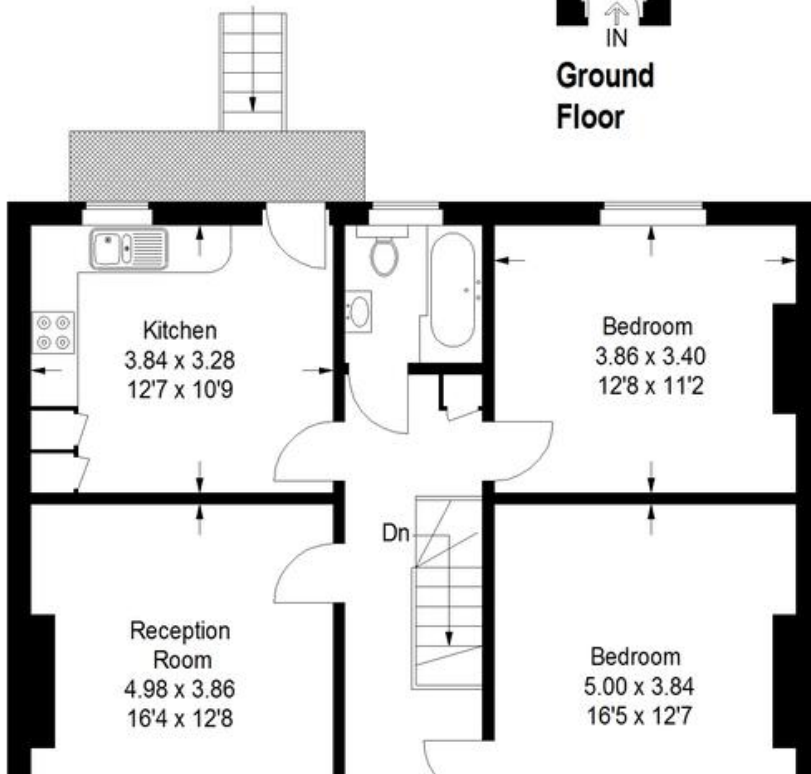
Approximate Gross Internal Area
Ground Floor = 1.8 sq m / 19 sq ft
First Floor = 80.9 sq m / 871 sq ft
Total = 82.7 sq m / 890 sq ft



(Not Shown In Actual Location / Orientation)



Ground Floor



Martin & Co Croydon

145 Brighton Road • South Croydon • CR2 6EF
T: 0208 688 8565 • E: croydon@martinco.com

0208 688 8565

<http://www.martinco.com>



Accuracy: References to the Tenure of a Property are based on information supplied by the Seller. The Agent has not had sight of the title documents. A Buyer is advised to obtain verification from their Solicitor. Items shown in photographs including but not limited to carpets, fixtures and fittings are not included unless specifically mentioned within the sales particulars. They may however be available by separate negotiation. Buyers must check the availability of any property and make an appointment to view before embarking on any journey to see a property. No person in the employment of the agent has any authority to make any representation about the property, and accordingly any information given is entirely without responsibility on the part of the agents, sellers(s) or lessors(s). Any property particulars are not an offer or contract, nor for part of one. **Sonic / Laser Tape:** Measurements taken using a sonic / laser tape measure may be subject to a small margin of error. **All Measurements:** All Measurements are Approximate. **Services Not tested:** The Agent has not tested any apparatus, equipment, fixtures and fittings or services and so cannot verify that they are in working order or fit for the purpose. A Buyer is advised to obtain verification from their Solicitor or Surveyor.