



MILE



Whitmore Gardens, London NW10 £520,000 Leasehold

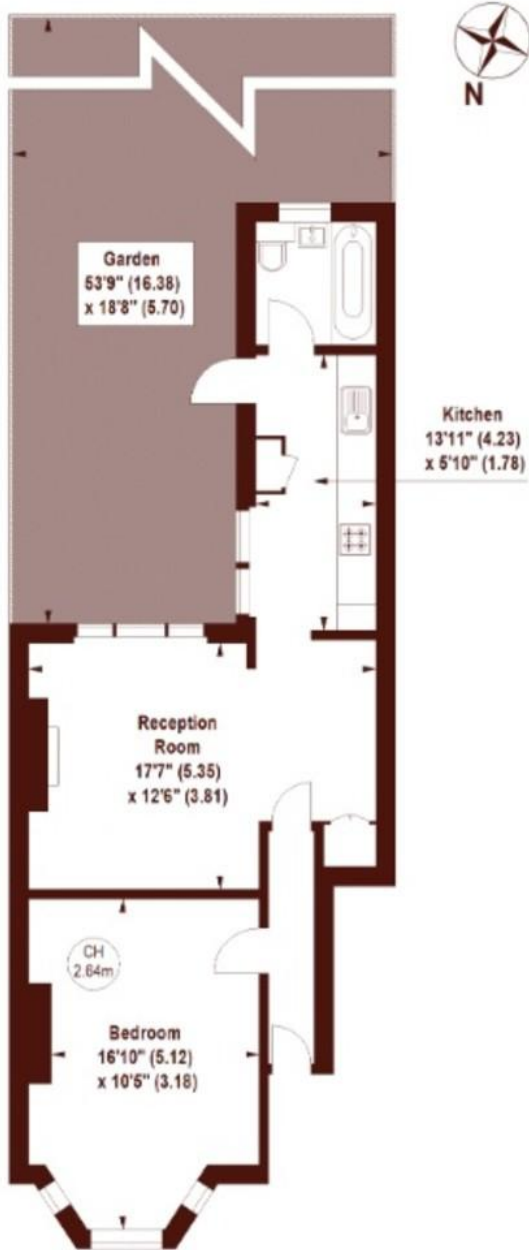
Mile are excited to offer this unique opportunity to acquire this great garden apartment on one of the best roads in Kensal Rise. Set on the ground floor of this charming conversion and flexible with layout, this great flat offers great living space set on this quiet residential road. Taking shape of a great double bedroom with bay windows or a generous three piece bathroom, a rear reception room with garden views leading to the modern fully fitted kitchen. There is access from the kitchen to the incredible south facing garden. Sold chain free with a lease of 178 years. Whitmore Gardens is within easy reach of Kensal Green and Willesden Junction (Bakerloo line and Overground) and Kensal Rise (Overland) stations as well as the numerous coffee shops, restaurants, gastro pubs and shopping amenities of Kensal Rise, Ladbroke Grove and Notting Hill

- Chain free
- Private Garden
- Ground floor flat
- 568 sq ft
- South Facing
- Quiet Residential Road
- Close to shops and local amenities
- Good transport links
- Great Condition
- Potential to extend (STPP)

Whitmore Gardens, NW10

APPROX. GROSS INTERNAL FLOOR AREA 568 SQFT / 52.77 SQM

Key :
CH - Ceiling Height



GROUND FLOOR

Not to scale, for guidance only and must not be relied upon as a statement of fact.
All measurements and areas are approximate only

MONEY LAUNDERING REGULATIONS 2003: Intending purchasers will be asked to produce identification documentation at a later stage and we would ask for your co-operation in order that there will be no delay in agreeing the sale.

General: While we endeavour to make our sales particulars fair, accurate and reliable, they are only a general guide to the property and, accordingly, if there is any point which is of particular importance to you, please contact the office and we will be pleased to check the position for you, especially if you are contemplating travelling some distance to view the property.

Measurements: These approximate room sizes are only intended as general guidance. You must verify the dimensions carefully before ordering carpets or any built-in furniture.

Services: Please note we have not tested the services or any of the equipment or appliances in this property, accordingly we strongly advise prospective buyers to commission their own survey or service reports before finalising their offer to purchase.