



153 Heys Road, Prestwich
Manchester

In Excess of **£360,000**

Three Bedrooms Plus Annexed Apartment

Council Tax band: B

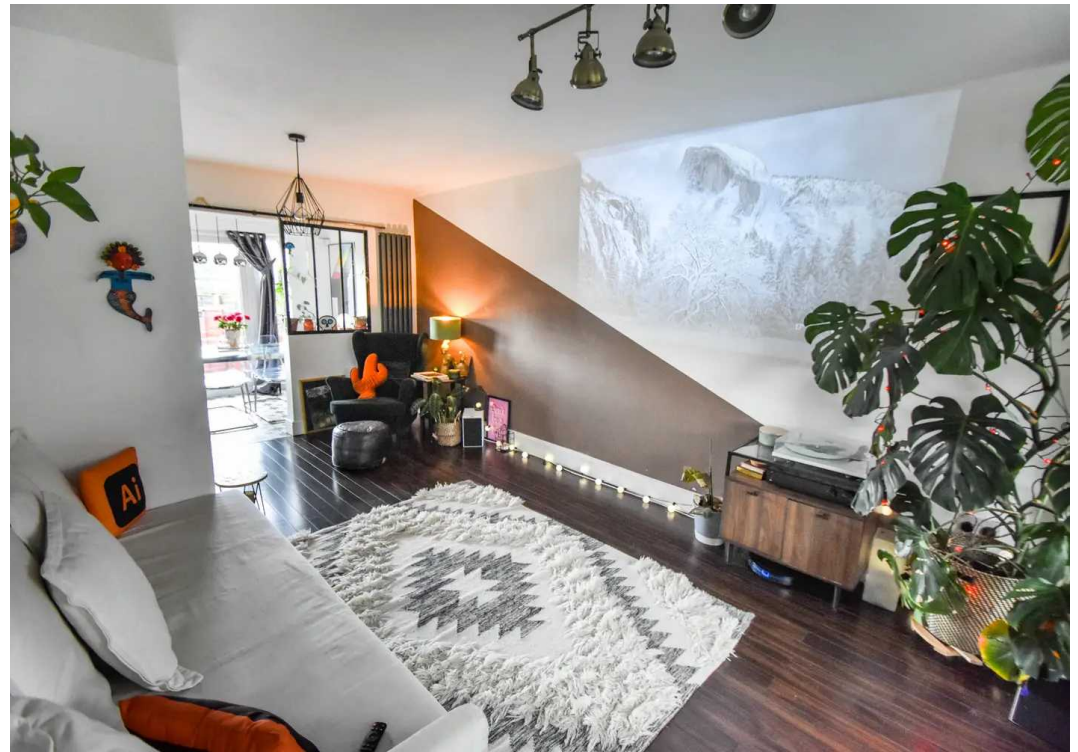
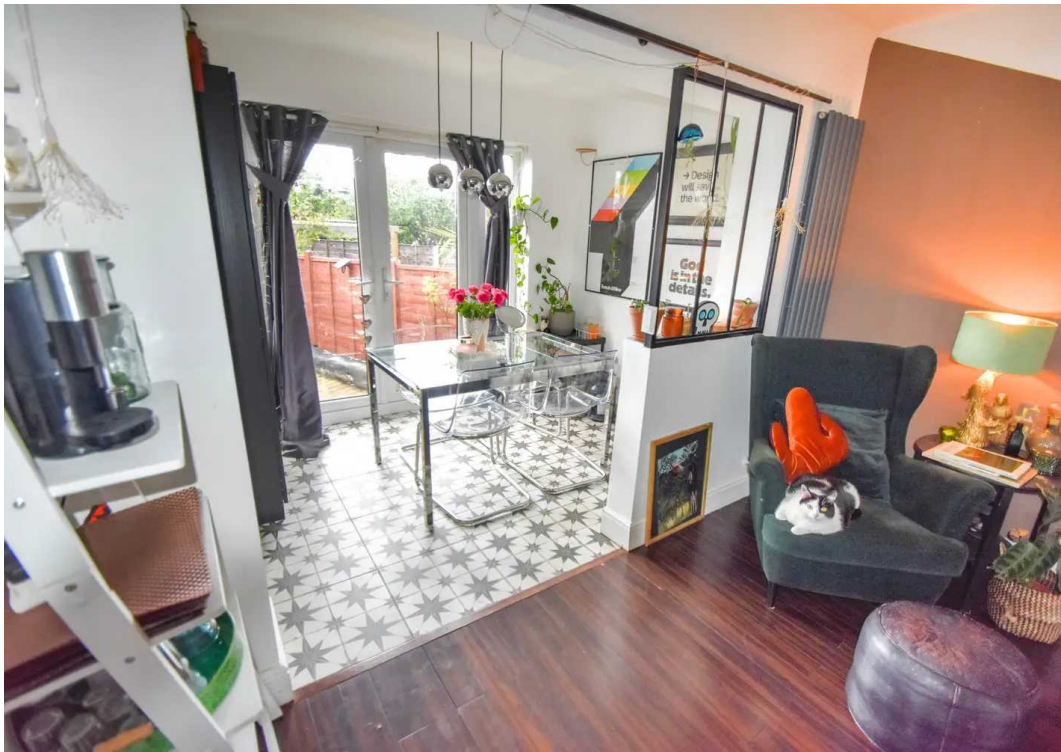
Tenure: Freehold

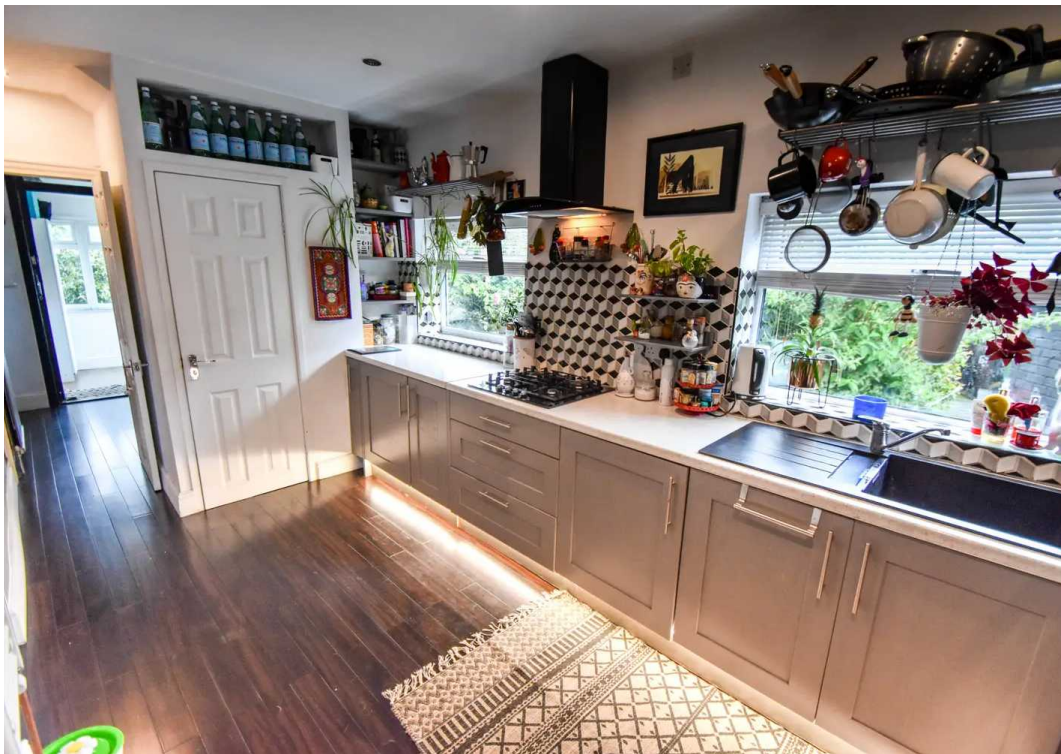
EPC Energy Efficiency Rating: D

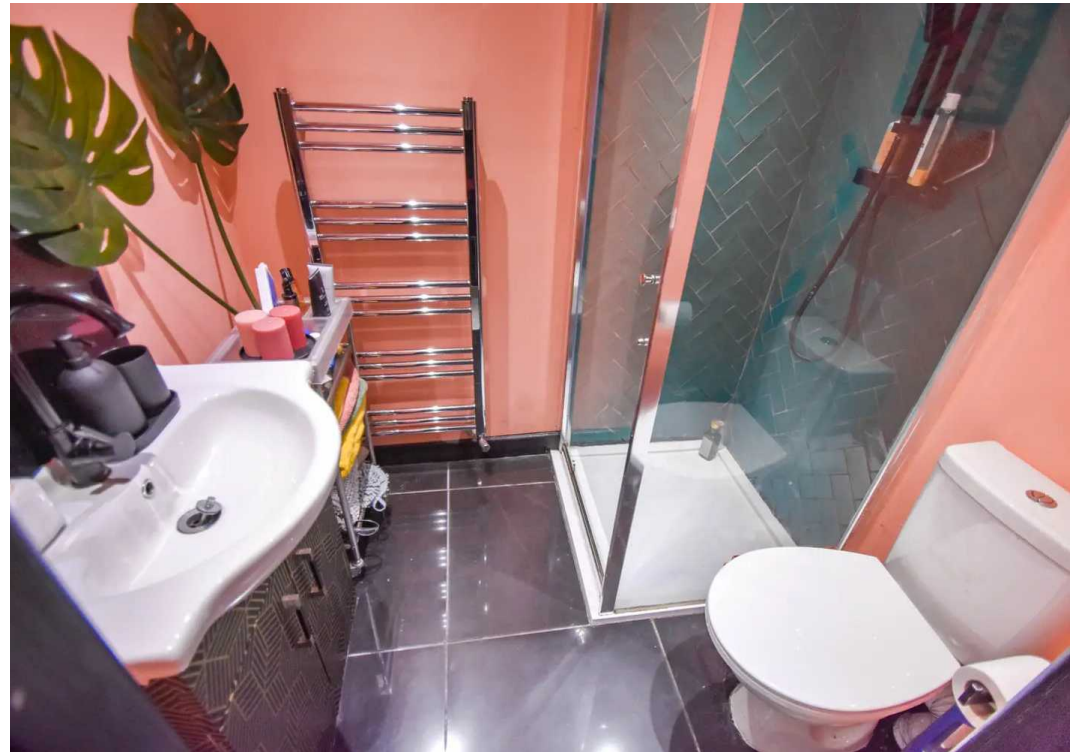
EPC Environmental Impact Rating: D

- Large Corner Plot
- Three Bedrooms Plus One Bedroom Apartment
- Modern Kitchen
- Sought After Location
- Walking Distance to Metrolink
- Driveway Parking
- Modernised Throughout







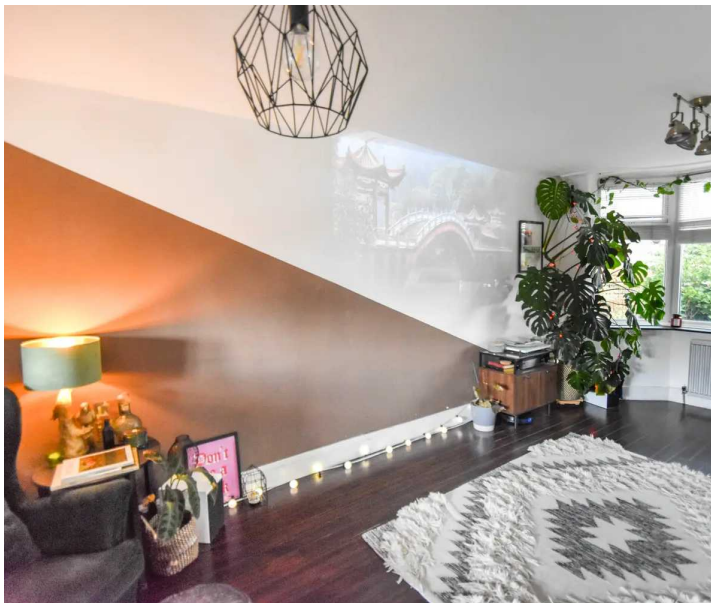


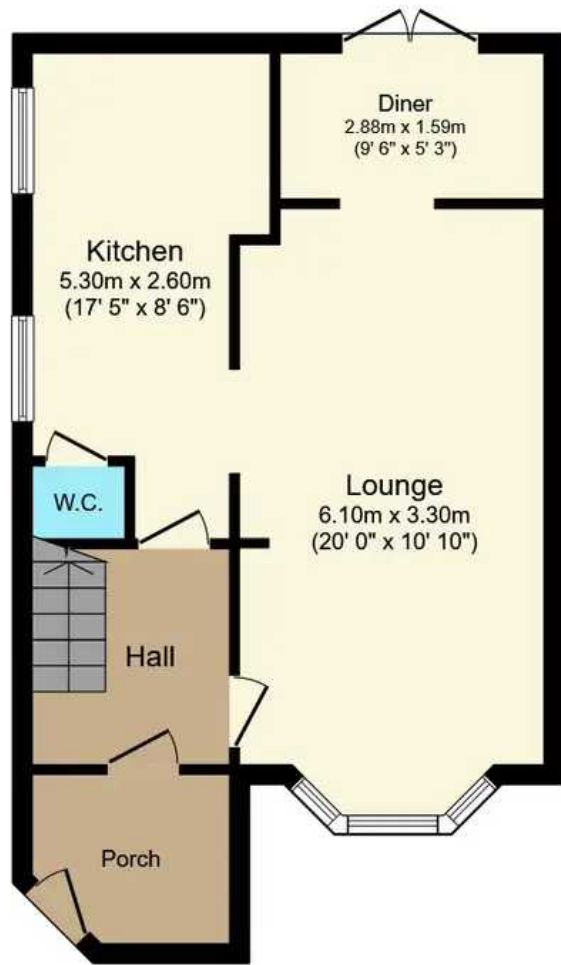


GARDEN

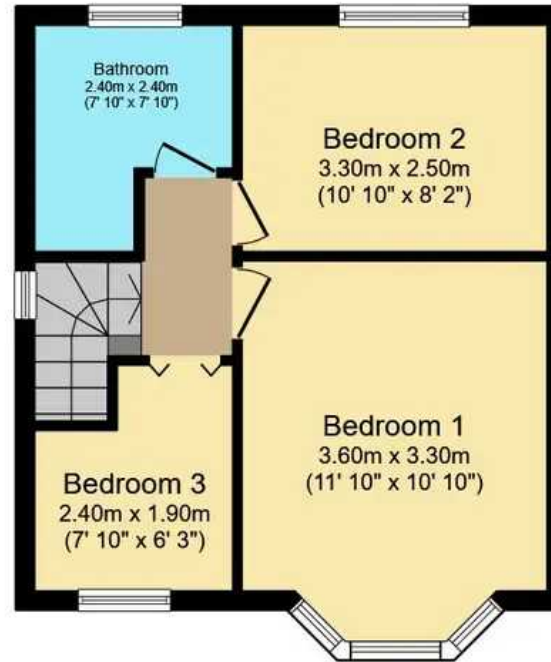
ALLOCATED PARKING

1 Parking Space

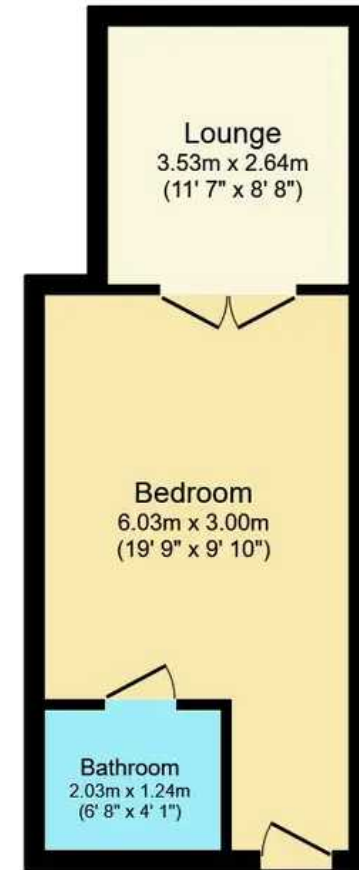




Ground Floor



First Floor



Annexe

Total floor area 111.5 sq.m. (1,200 sq.ft.) approx

This Floor Plan is for illustration purposes only and may not be representative of the property. The position and size of doors, windows and other features are approximate. Unauthorized reproduction prohibited. © PropertyBOX