

ENNISMORE GARDENS

KNIGHTSBRIDGE SW7



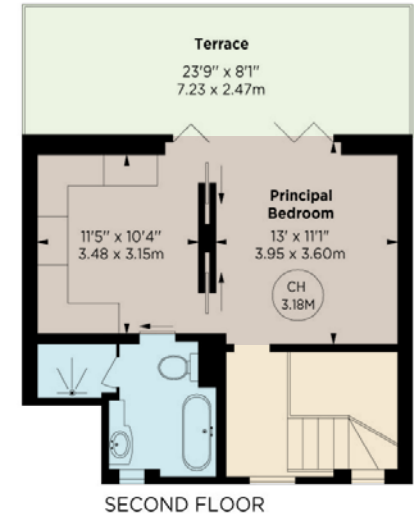
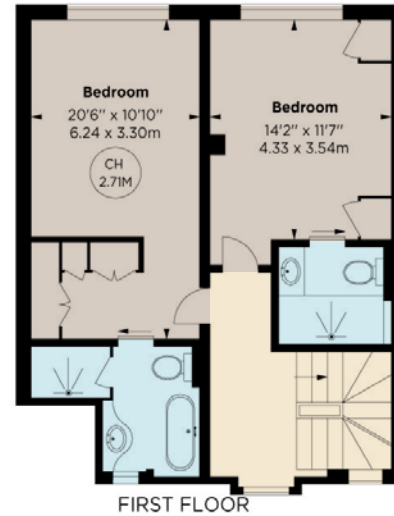


APPROXIMATE GROSS
INTERNAL AREA
2,312 sq.ft / 214.78 sq. m



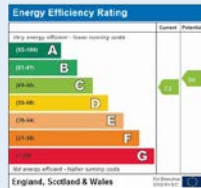
Ennismore Gardens and Ennismore Mews are highly desirable locations in the heart of Knightsbridge, providing convenient access to a wide range of local amenities such as Hyde Park, prestigious schools, dining establishments, and shops, as well as excellent transportation connections.

This remarkable freehold residence has undergone a splendid renovation. Its entrance, discreetly situated alongside The Russian Orthodox Church, is complemented by a full frontage and a secondary entrance at the rear on Ennismore Mews. Spanning an area of 2,312 sq. ft (214.78 sq. m), this house features four spacious double bedrooms, each with its own ensuite bathroom. The reception room is adorned with intricate decorations and offers a delightful southerly view along the entire length of the mews. The principal bedroom suite boasts a stunning south-facing rooftop terrace and an adjoining dressing room, which also overlooks the mews.



Features

- Principal Bedroom With Ensuite & Dressing Room & Terrace
- Three Double Bedrooms Each With Ensuite Bathrooms
- Large Reception Room/Kitchen



NVP
NICOLAS VAN PATRICK

6-8 MONTELIER STREET,
LONDON SW7 1EZ
SALES | +44 (0)20 7581 8277
LETTINGS | +44 (0)20 7590 1200
info@nicolasvanpatrick.com
www.nicolasvanpatrick.com

Price: £4,995,000

Tenure: Freehold



These details have been prepared for general guidance only and should not be relied upon by prospective purchaser/ tenants who before proceeding must check and otherwise satisfy themselves as to the property and the nature, state and availability of any facility or service.

This floorplan is for GUIDANCE ONLY and NOT FOR VALUATION purposes.