



67 Highgrove Road, Baffins

In Excess of £300,000

 **chinneckshaw**



67 Highgrove Road

Baffins, Portsmouth

We are delighted to be selling this large family home in the heart of Baffins. With easy access to the Eastern Road, amenities on Tangier Road, recreational facilities at Tangier Playing Fields, Great Salterns and Milton Common, this house has everything for the family.

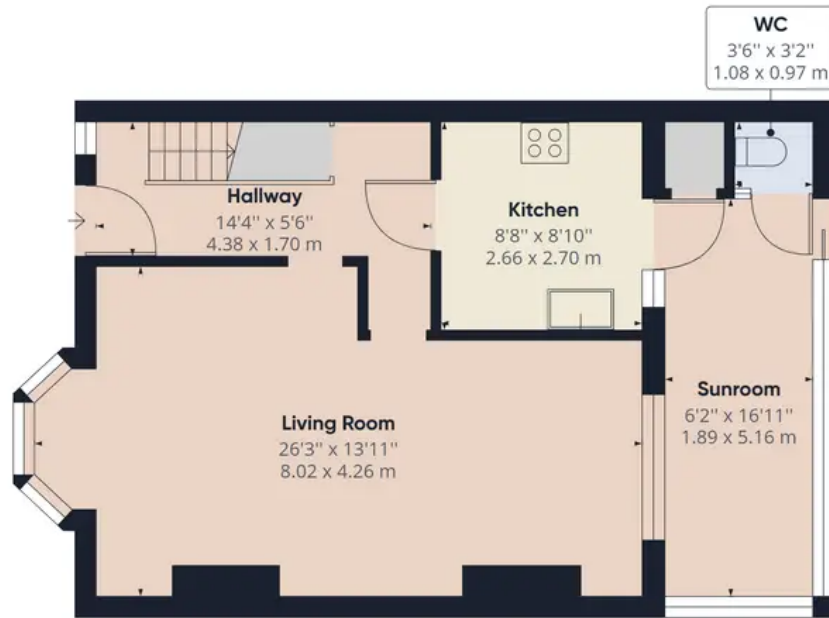
The front door opens and straight away you see a light, bright hallway with an understairs cupboard. Next you'll find our favourite room. The open plan Lounge Dining room works so well and with lots of space for today's modern furniture we think tis would be perfect to relax in. The Lounge bay window is imposing and allows lots of light to stream through this room. The modern kitchen has a selection of white gloss shaker style fitted wall and base cabinets. There is plenty of worktop space here too with access through to a good size conservatory with WC off that. From here you have a door leading out into the west facing garden.

Upstairs, there is a good size landing with access to three bedrooms. Both double rooms are an excellent size and are ready to move straight into! The single room is to the rear aspect overlooking the garden and the bathroom, a fitted suite is at the front of the house. Outside you'll find a lovely west facing garden. A great outside space for the little ones to play safely in and with the better weather here a perfect venue for entertaining in! There is a good size brick built storage shed to the rear of the garden too with a door leading to pedestrian access.

This is a house that has a wonderful family feel to it and is waiting for a new family to make it their own.

Council Tax band: C Tenure: Freehold

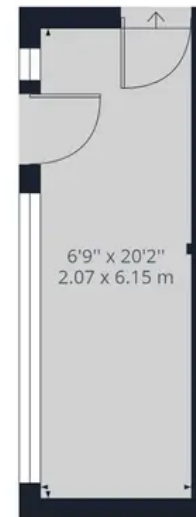




Ground Floor Building 1



Floor 1 Building 1



Ground Floor Building 2

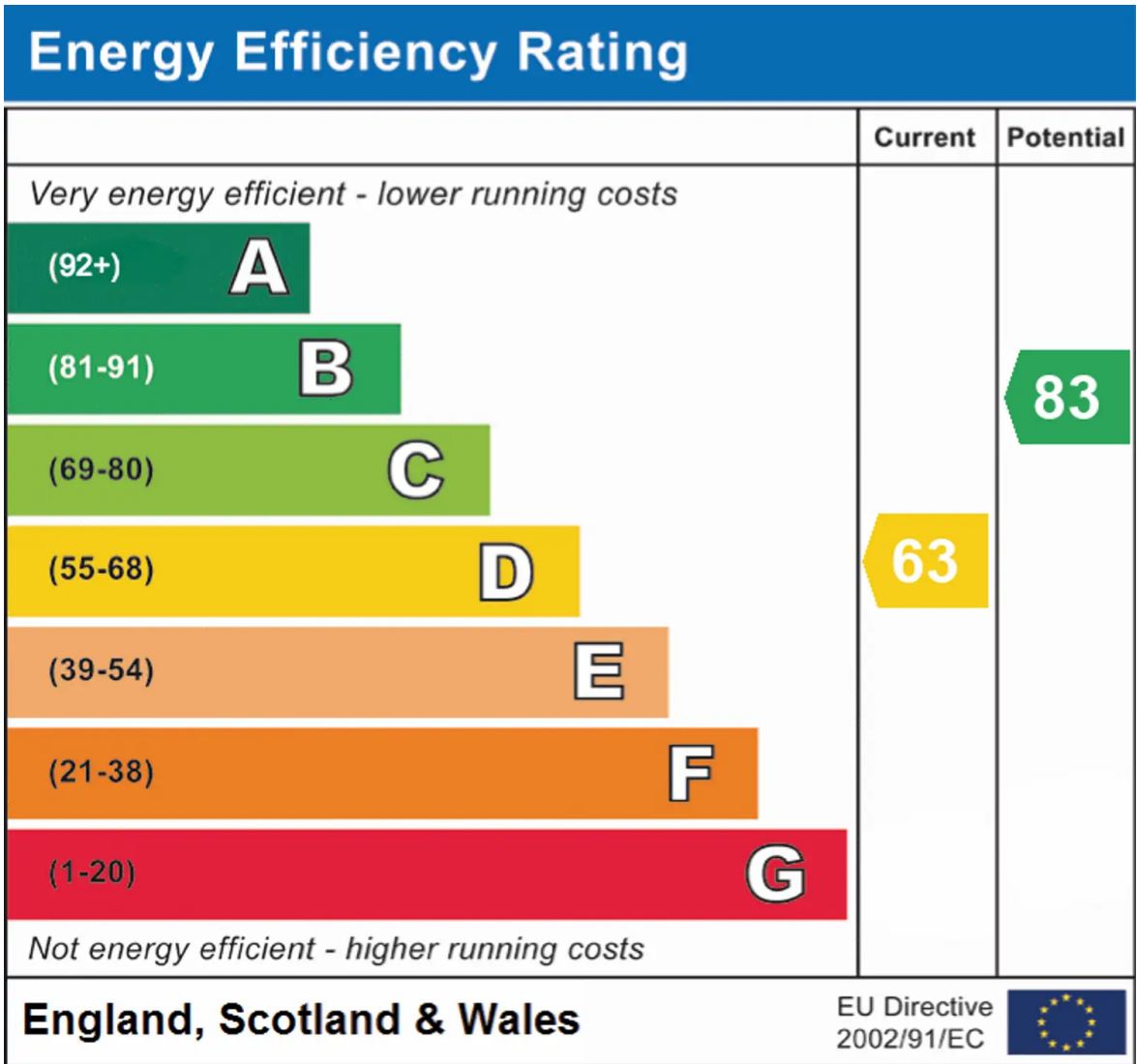
Approximate total area⁽¹⁾

1195.66 ft²

111.08 m²

(1) Excluding balconies and terraces

While every attempt has been made to ensure accuracy, all measurements are approximate, not to scale. This floor plan is for illustrative purposes only.



Chinneck Shaw

Bridge House, Milton Road, Portsmouth – PO3 6AN

023 9282 6731

hello@chinneckshaw.co.uk

www.chinneckshaw.co.uk/

Chinneck Shaw, Bridge House, Milton Road, PO3 6AN Consumer Protection from Unfair Trading Regulations 2008: These details are for guidance only and complete accuracy cannot be guaranteed. If there is any point which is of particular importance, verification should be obtained. The do not constitute a contract or part of a contract. All measurements are approximate. No guarantee can be given with regard to planning permissions or fitness for purpose. No apparatus, equipment, fixture or fitting has been tested. Items shown in the photographs are NOT necessarily included. Interested Parties are advised to check availability and make an appointment to view before travelling to see a property.