



HARRISON  
Sales &  
Lettings  
ARDIENZO

Hospital Road, Moreton-In-Marsh

Moreton-In-Marsh

In Excess of £425,000



An opportunity to purchase a delightful 1930's bay-fronted house situated within walking distance of the town centre. The light and airy accommodation comprises: entrance hall, light and bright double aspect sitting room with wood-burning stove and bay window, kitchen-dining room which in turn leads out to a recently constructed garden room, which has double doors out to the garden.

Upstairs there are two double bedrooms and the bathroom. The principal bedroom benefits from being dual aspect also, as does bedroom two.

Outside, there is a gravelled area which provides access to the charming rear garden, predominantly laid to lawn, and with a timber summerhouse.

Parking is on the road, but with the possibility of creating a parking space in the garden.

Agent's note: A neighbour to the rear has shared access to their property along side Garden Hurst. More details can be obtained from the selling agent.

Tenure: We believe the property to be **Freehold**. Potential purchasers should obtain confirmation of this from their solicitor prior to exchange of contracts.

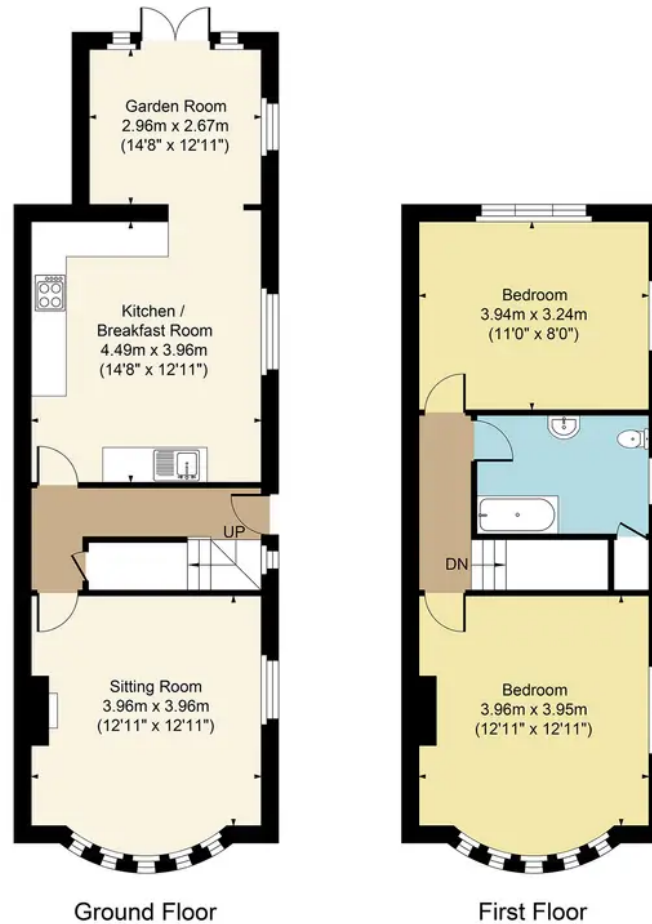
EPC rating - D

Council tax band - D





Garden Hurst Hospital Road Moreton GL56 0BN  
Main House Approx. Gross Internal Area:- 93.21 sq.m. 1003 sq.ft.



FOR ILLUSTRATIVE PURPOSES ONLY-NOT TO SCALE  
The position & size of doors, windows, appliances and other features are approximate only.  
□□□ Denotes restricted head height  
[www.dmlphotography.co.uk](http://www.dmlphotography.co.uk)

High Street, Moreton-in-Marsh, GL56 0AF

[harrisonhardie.co.uk](http://harrisonhardie.co.uk) 01608 651000

Moreton-In-Marsh