



Felsham Road | Bradfield St George | Suffolk | IP30 0AS

Offers In Excess Of £215,000

RENOVATION OPPORTUNITY! In need of updating is this semi detached 2 bedroom bungalow situated on a good size plot in the rural village of Bradfield St George. The property includes two bedrooms, living room, kitchen and bathroom. Offering ample parking, large gardens and lots of potential this property is unlikely to be available for long!

- OPEN HOUSE - CALL TO BOOK YOUR APPOINTMENT
- Chain Free
- Rural Village location
- Generous plot
- Updating required
- Ample parking
- 2 Bedrooms

Approximate Room Sizes

ENTRANCE HALL Front door, doors to the two bedrooms, bathroom, lounge and airing cupboard.

LOUNGE 13' 09" x 10' 08" (4.19m x 3.25m) Window to front aspect, door to kitchen.

KITCHEN 7' 10" x 7' 11" (2.39m x 2.41m) Double glazed window to front aspect. Range of wall and base units. Sink and drainer unit.

MASTER BEDROOM 10' 08" x 9' 10" (3.25m x 3m) Window to front aspect.

BEDROOM 2 8' 10" x 7' 10" (2.69m x 2.39m) Window to rear aspect, door to cupboard.

BATHROOM Glazed window to rear aspect. Low level WC, wash hand basin, panelled bath. Part tiled walls.

OUTSIDE To the front of the property there is a driveway providing parking for multiple cars, the remainder is mainly laid to lawn.

The rear garden is a generous size with a patio area but mainly laid to lawn. Oil tank.

Local Authority – West Suffolk Council

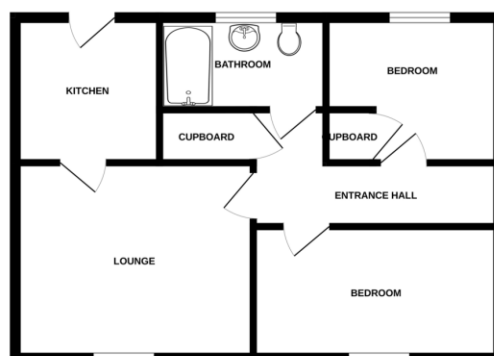
Council Tax Band – B

Tenure – Freehold

Services – Oil Central Heating

Post Code – IP30 0AS

GROUND FLOOR



Whilst every effort has been made to ensure the accuracy of the floorplan contained here, measurements should be taken on site prior to any purchase and should be used for guidance purposes only. The actual layout and dimensions may vary from those shown on the floorplan and the purchaser should verify the same.



Contact Details

6 The Traverse, Bury St Edmunds, IP33 1BJ

Tel: 01284 769598

Email: burystedmunds@bychoice.co.uk

Agents Note: Whilst every care has been taken to prepare these sales particulars, they are for guidance purposes only. All measurements are approximate and for general guidance purposes only and whilst every care has been taken to ensure their accuracy, they should not be relied upon and potential buyers are advised to check the measurements.

