

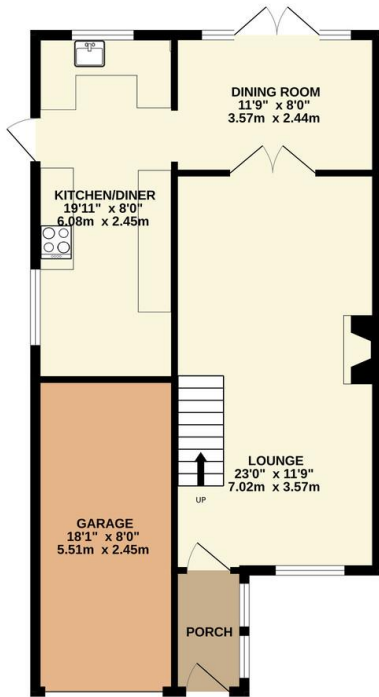


Property Summary

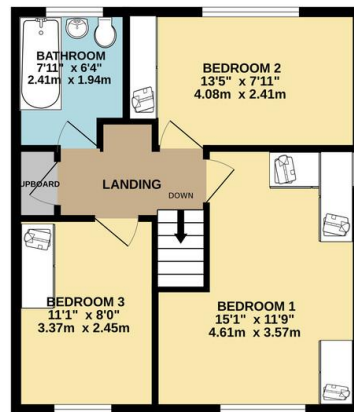
This immaculate and extended three bedroom semi detached family home is nestled on a quiet street within the highly sought after location of Glen Parva. The accommodation comprises of porch, lounge, dining room, kitchen diner, landing to three bedrooms, refurbished bathroom suite, front and rear landscaped gardens, garage and driveway providing car standing space. Internal inspection comes highly recommended.



GROUND FLOOR
691 sq.ft. (64.2 sq.m.) approx.

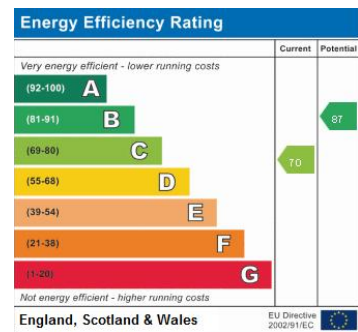


1ST FLOOR
454 sq.ft. (42.2 sq.m.) approx.



TOTAL FLOOR AREA: 1145 sq.ft. (106.4 sq.m.) approx.

Whilst every attempt has been made to ensure the accuracy of the floorplan contained here, measurements of doors, windows, rooms and any other items are approximate and no responsibility is taken for any error, omission or mis-statement. This plan is for illustrative purposes only and should be used as such by any prospective purchaser. The services, systems and appliances shown have not been tested and no guarantee as to their operability or efficiency can be given.
Made with Metropix ©2023



- Semi Detached
- Three Bedrooms
- Extended
- Immaculate Presentation
- Quiet Street Location
- Sought After Area
- Refurbished Bathroom
- Garage

phillips george | sales & lettings

Agents Note: Whilst every care has been taken to prepare these sales particulars, they are for guidance purposes only. All measurements are approximate and for general guidance purposes only and whilst every care has been taken to ensure their accuracy, they should not be relied upon and potential buyers are advised to recheck the measurements

46 Long Street, Wigston, Leicestershire, LE18 2AH
 info@phillipsgeorge.co.uk
 0116 216 8178

