



Northcourt Mews, Abingdon

Abingdon

Simpsons

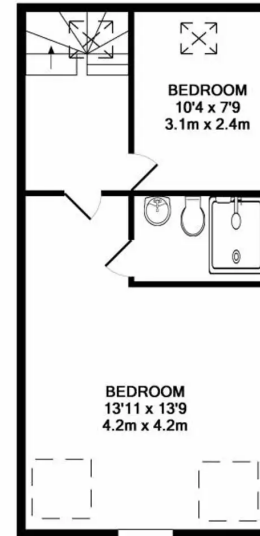
The Proactive Agent

£450,000

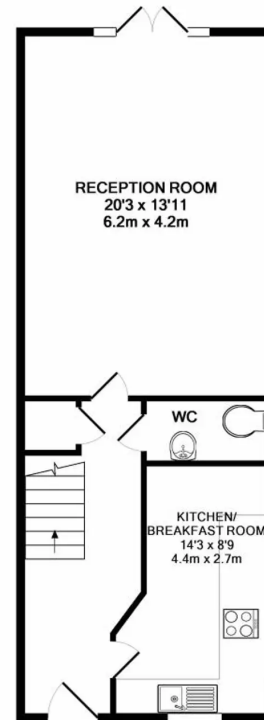


SCAN THE
QR CODE
FOR DETAILS

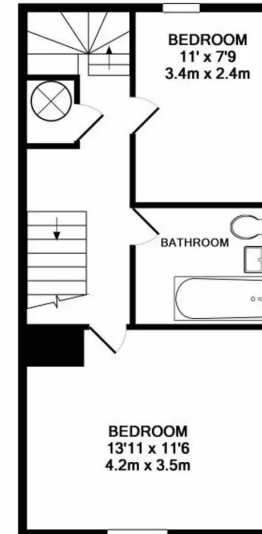




2ND FLOOR



GROUND FLOOR



1ST FLOOR

TOTAL APPROX. FLOOR AREA 1399 SQ.FT. (130.0 SQ.M.)

Whilst every attempt has been made to ensure the accuracy of the floor plan contained here, measurements of doors, windows, rooms and any other items are approximate and no responsibility is taken for any error, omission, or mis-statement. This plan is for illustrative purposes only and should be used as such by any prospective purchaser. The services, systems and appliances shown have not been tested and no guarantee as to their operability or efficiency can be given
Made with Metropix ©2018

Northcourt Mews

ABINGDON, Abingdon

This modern property built in 2007 is set in a convenient North Abingdon location.

Council Tax band: E

Tenure: Freehold

- No onward chain.
- Dunmore Primary school catchment area and walking distance to all Abingdon secondary schools.
- Car port parking for two cars.
- Approximately 1400sqft of accommodation.



SCAN THE
QR CODE
TO BOOK
YOUR VIEWING



