



Chain Hill, Wantage

Guide Price £385,000

Wantage

Simpsons

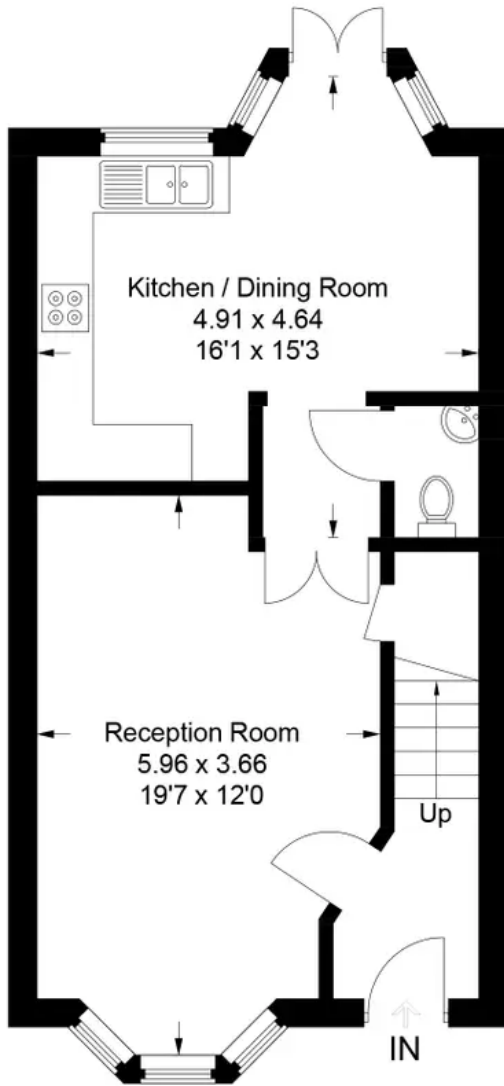
The Proactive Agent



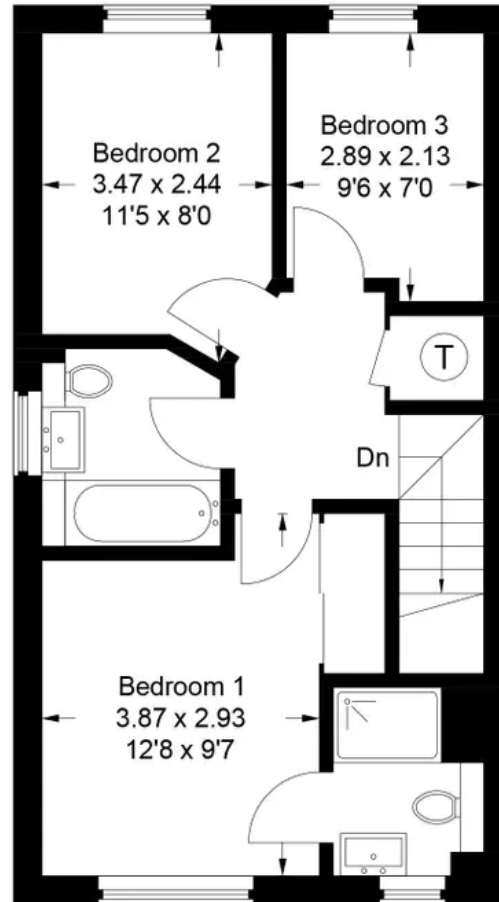
SCAN THE
QR CODE
FOR DETAILS



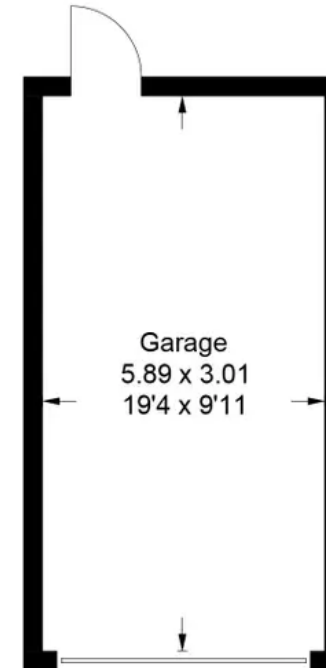
Approximate Gross Internal Area
 Ground Floor = 44.6 sq m / 480 sq ft
 First Floor = 42.1 sq m / 453 sq ft
 Garage = 17.7 sq m / 190 sq ft
 Total = 104.4 sq m / 1,123 sq ft



Ground Floor



First Floor



(Not Shown In Actual Location / Orientation)

This plan is for layout guidance only. Not drawn to scale unless stated. Windows and door openings are approximate. Whilst every care is taken in the preparation of this plan, please check all dimensions, shapes and compass bearings before making any decisions reliant upon them.

Chain Hill

Wantage, Wantage

Situated at the edge of this very popular development and tucked away is a three bedroom family home on a corner plot with a garage and off street parking.

Tenure: Freehold

- Corner plot which is south-west facing
- The owners have secured an onward purchase
- Garage and off-street parking
- Scope to extend (STPP)



SCAN THE
QR CODE
TO BOOK
YOUR VIEWING



