



Morton Close, Abingdon

Guide Price £400,000

Abingdon

Simpsons

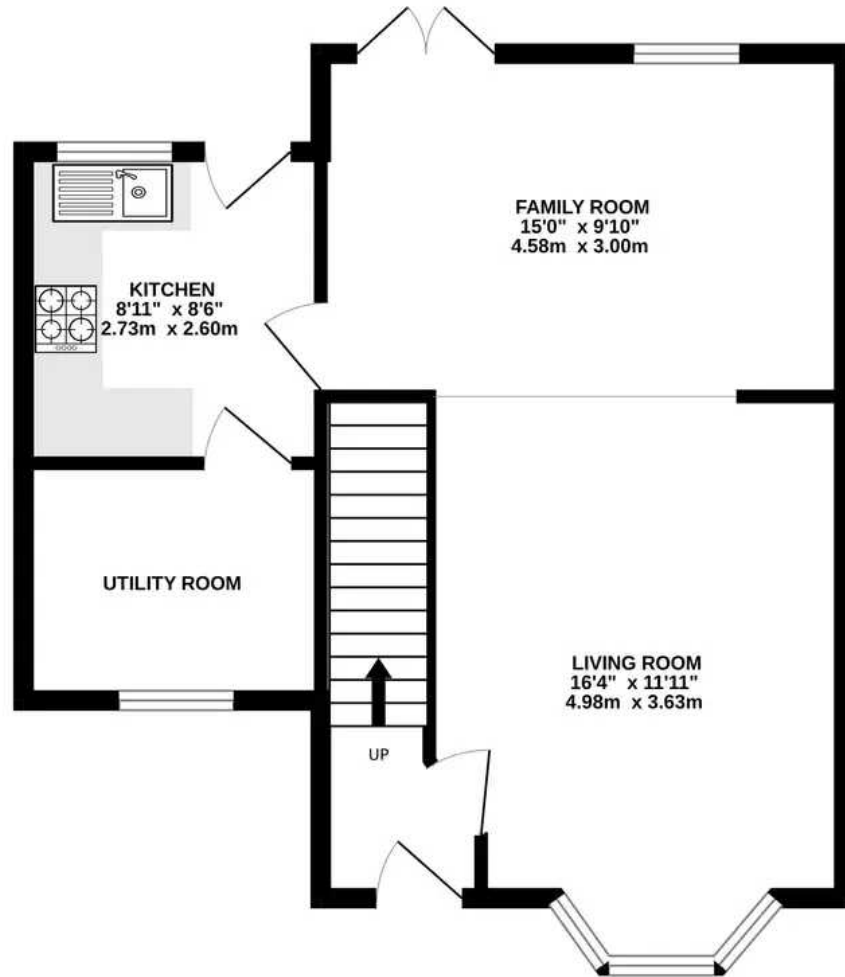
The Proactive Agent



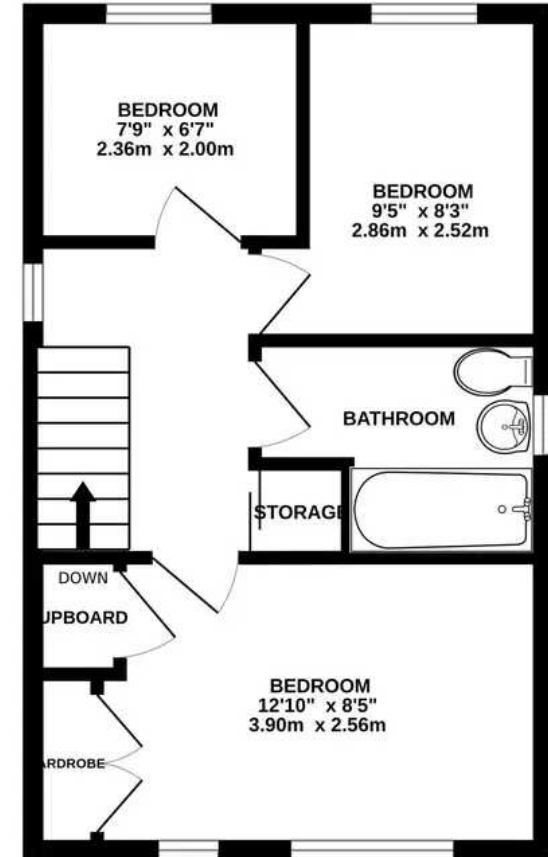
SCAN THE
QR CODE
FOR DETAILS



GROUND FLOOR
508 sq.ft. (47.2 sq.m.) approx.



1ST FLOOR
351 sq.ft. (32.6 sq.m.) approx.



TOTAL FLOOR AREA : 859 sq.ft. (79.8 sq.m.) approx.

Whilst every attempt has been made to ensure the accuracy of the floorplan contained here, measurements of doors, windows, rooms and any other items are approximate and no responsibility is taken for any error, omission or mis-statement. This plan is for illustrative purposes only and should be used as such by any prospective purchaser. The services, systems and appliances shown have not been tested and no guarantee as to their operability or efficiency can be given.
Made with Metropix ©2023

6 Morton Close

Abingdon, Abingdon

A lovely family home within a short walk of the 'outstanding' Thomas Reade Primary School.
Council Tax band: D

Tenure: Freehold

- Open plan lounge/family room.
- Three bedrooms (bedroom two and three currently used as one bedroom).
- No onward chain.
- Modern kitchen.
- Modern bathroom.



SCAN THE
QR CODE
TO BOOK
YOUR VIEWING



