



Segsbury Road, Wantage

Guide Price £350,000

Wantage

Simpsons

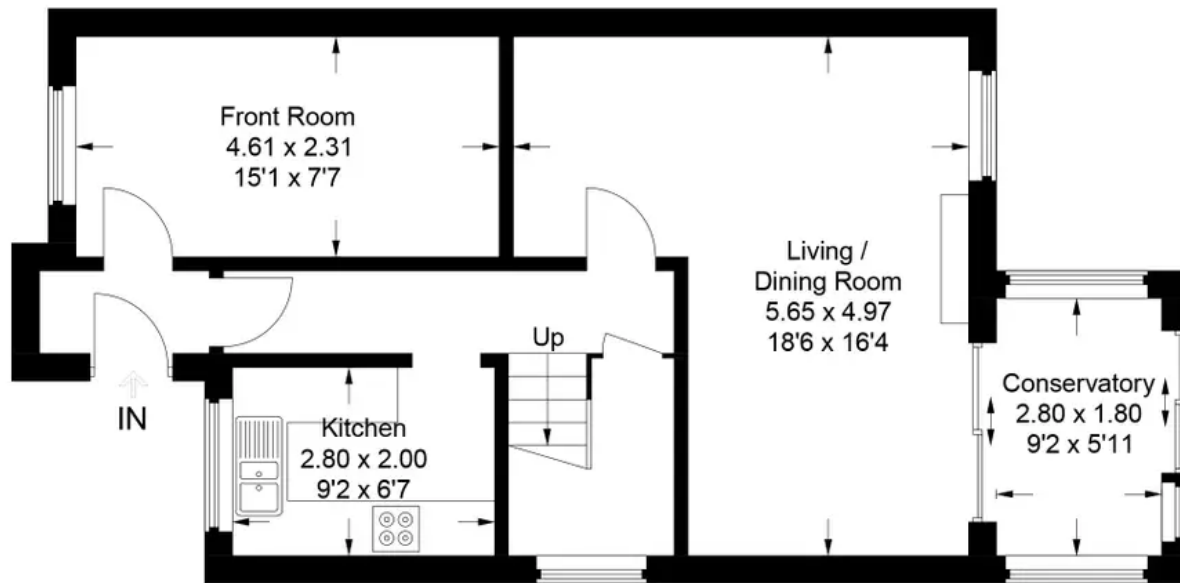
The Proactive Agent



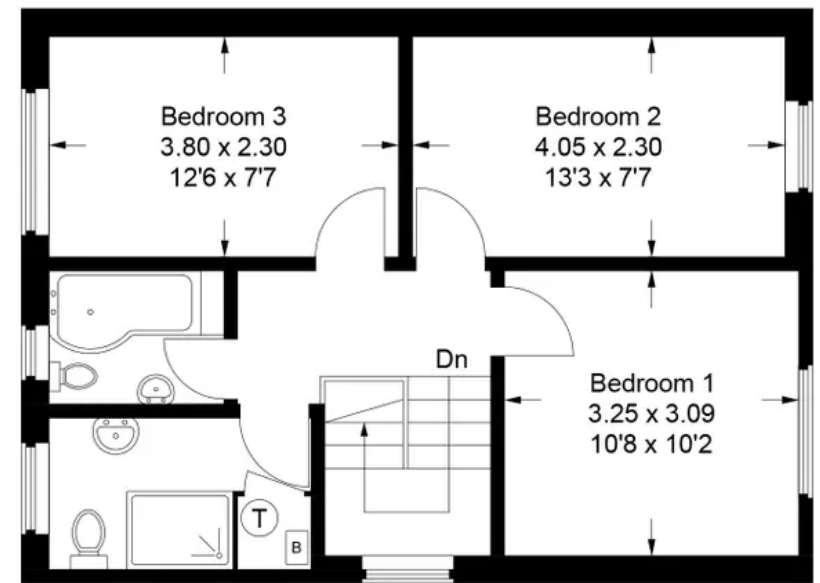
SCAN THE
QR CODE
FOR DETAILS



Approximate Gross Internal Area
Ground Floor = 57.7 sq m / 621 sq ft
First Floor = 46.1 sq m / 496 sq ft
Total = 103.8 sq m / 1,117 sq ft



Ground Floor



First Floor

This plan is for layout guidance only. Not drawn to scale unless stated. Windows and door openings are approximate. Whilst every care is taken in the preparation of this plan, please check all dimensions, shapes and compass bearings before making any decisions reliant upon them.

© CJ Property Marketing Ltd Produced for Simpsons

Segsbury Road

Wantage, Wantage

A beautifully presented three bedroom semi-detached home within catchment for Stockham Primary School which has been rated outstanding by Ofsted.

Council Tax band: D

Tenure: Freehold

- Within catchment for Stockham Primary School rated outstanding by Ofsted
- Walking distance to Wantage market place
- Two bathrooms and two reception rooms
- Water softener.



SCAN THE
QR CODE
TO BOOK
YOUR VIEWING

