



The Warren, Abingdon

Abingdon

Simpsons

The Proactive Agent

£550,000



SCAN THE
QR CODE
FOR DETAILS

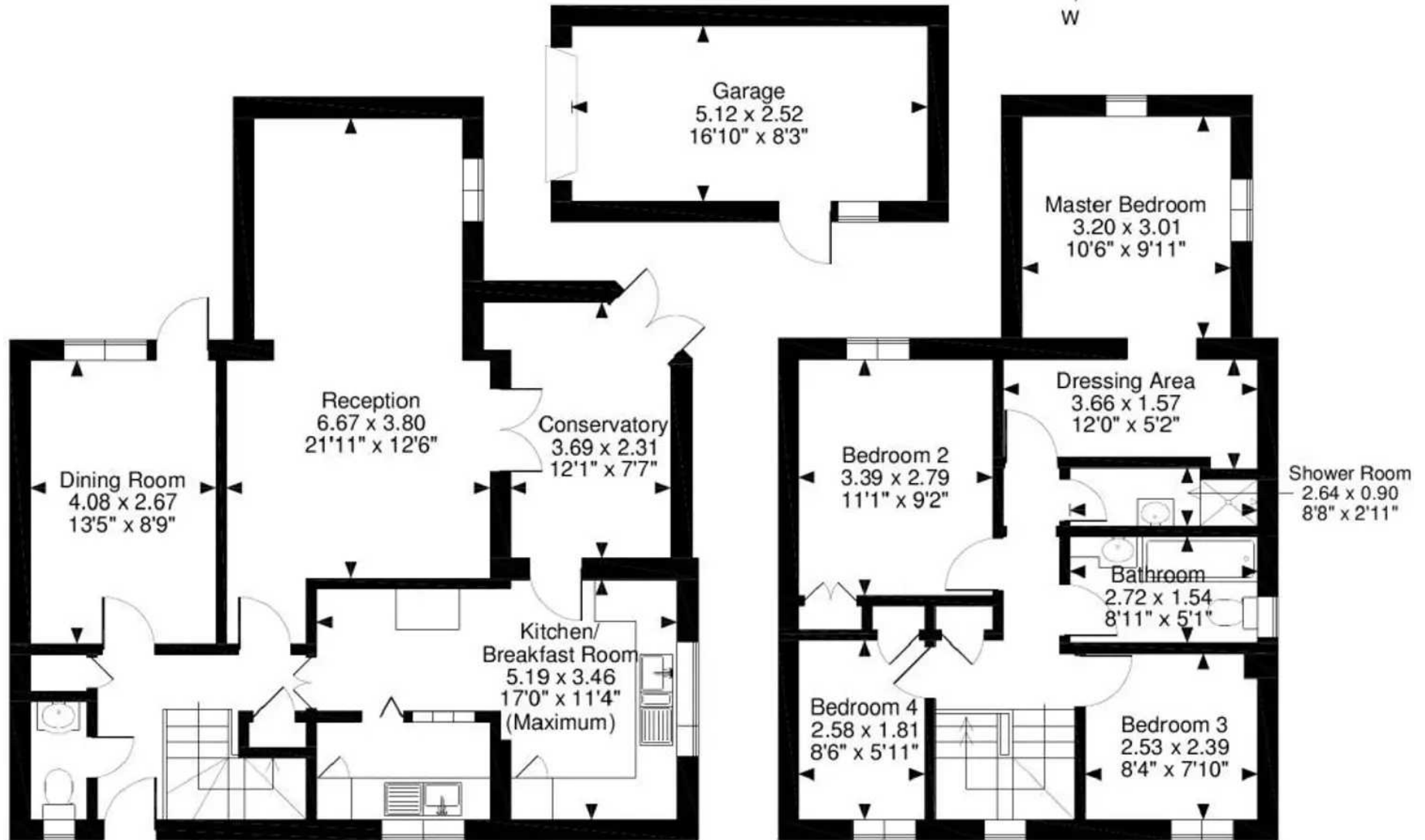
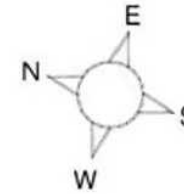


47 The Warren, Abingdon, OX14 3XB

Approximate Gross Internal Area

Main House = 1352 Sq Ft/126 Sq M

Garage = 139 Sq Ft/13 Sq M



Ground Floor

First Floor

The Warren

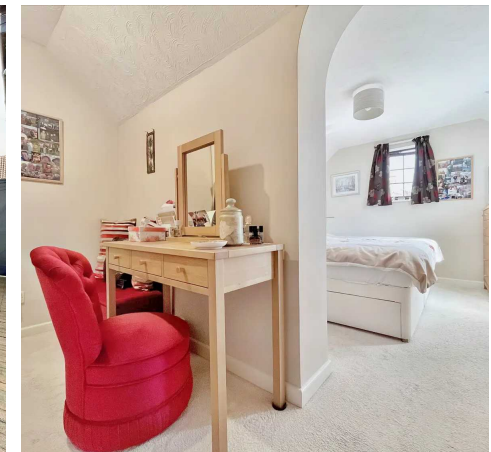
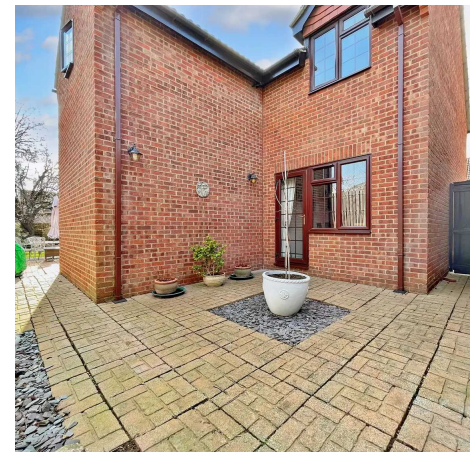
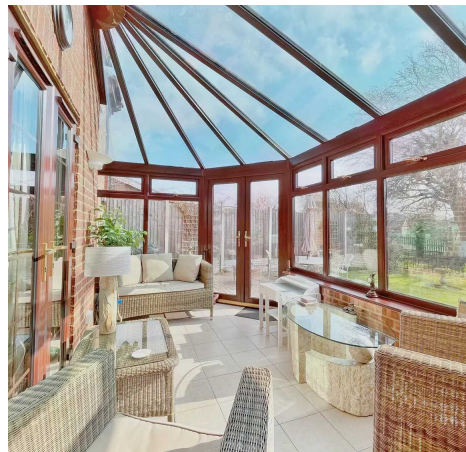
Abingdon, Abingdon

A significantly extended family home in a prime location. The Warren is located just off Radley Road and is located in the 'outstanding' Thomas Reade School catchment.

Council Tax band: E

Tenure: Freehold

- Larger than average sitting room overlooking the rear garden.
- Separate dining room.
- Modern kitchen/breakfast room.
- Separate utility room.
- Landscaped rear garden.
- Master bedroom with built in dressing room and potential to re-configure adding an en-suite.



SCAN THE
QR CODE
TO BOOK
YOUR VIEWING



