



 **2**
Bedrooms

 **1**
Bathroom

Tenure :
Freehold



Available to purchase is this stunning two bedroom semi detached home located on Hopefield Green in Rothwell.

Call Tudor Sales & Lettings on 0113 282 3056 for more information or to arrange a viewing!

Available to purchase is this stunning two bedroom semi detached home located on Hopefield Green in Rothwell. The internal layout comprises in brief: entrance hall, kitchen, dining area and a lounge. First floor: landing, two double bedrooms and a modern bathroom. Benefits from double glazing and gas central heating. Externally, there is a driveway to the front that leads to a garage. To the rear is a fully enclosed garden with lawned and patio areas. Call Tudor Sales & Lettings today for more information or to arrange a viewing on 0113 282 3056.

Kitchen *2.31m x 3.50m (7' 7" x 11' 6")*

Fitted with a range of wall and base units. Sink and tap. Laminated worksurfaces. Free standing oven with extractor hood over. Tiled splashback. Plumbing for washing machine. Space for undercounter fridge.

Dining Room

Double glazed French doors open to the rear garden. Skylight window. Laminated flooring. Central heating radiator.

Lounge *3.77m x 3.50m (12' 4" x 11' 6")*

Double glazed bay window to the front. Feature fireplace. Laminated flooring. Coving to ceiling. Central heating radiator.

Bedroom 1 *3.31m x 3.50m (10' 10" x 11' 6")*

Double glazed window. Central heating radiator. Coving to ceiling.

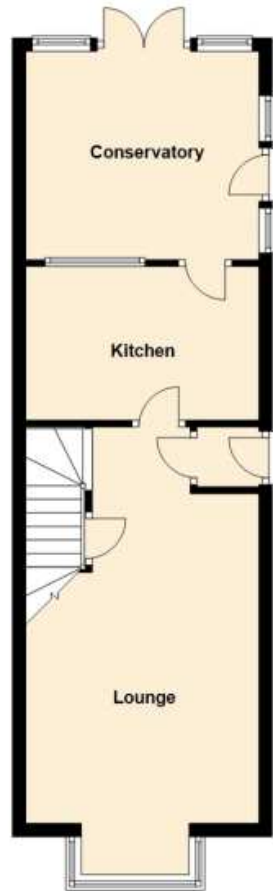
Bedroom 2 *2.87m x 3.50m (9' 5" x 11' 6")*

Double glazed window. Central heating radiator. Coving to ceiling.

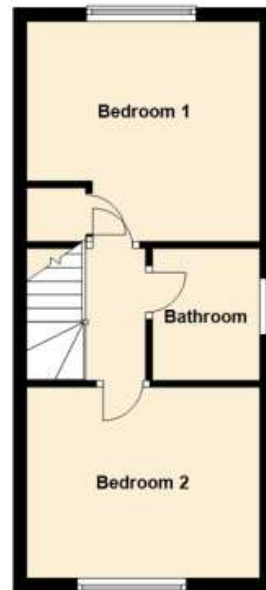
Bathroom

Three piece white suite comprising of: bath with shower over, push button wc and a floating vanity unit.

Ground Floor



First Floor



Coming soon

