



 **3**  
Bedrooms

 **1**  
Bathroom

**Tenure :**  
**Freehold**



Tudor Sales and Lettings are pleased to present for sale this 3 Bedroom mid terraced property with no onward chain. Fabulous location near to local amenities and a short walk from Outstanding rated schools and the Main street.

The accomodation comprises of in brief: Porch, Living room and kitchen diner to the ground floor and three bedrooms and a bathroom to the first floor. Externally there is on street parking at the front and a nice enclosed garden to the rear.

This property would be ideal for a lot of different people and we expect a great deal of interest so book a viewing today.

### **Entry Vestibule**

Useful for coats and shoes this entry vestibule means you do not enter straight into the living room off the street

### **Living Room** 11' 9" x 9' 8" (3.58m x 2.95m)

Generously proportioned living room with feature fireplace with mantelpiece surround. Wooden flooring, Coving to ceiling and double glazed window to front. Centrally heated radiator

### **Kitchen Diner** 11' 9" x 9' 8" (3.58m x 2.95m)

Fitted kitchen with a range of wall and base units and space for appliances. Sink with mixer tap and tiled splashback. Useful under stairs pantry cupboard. Double glazed window and door leading to garden at rear.

### **Bedroom 1** 11' 2" x 8' 6" (3.40m x 2.59m)

Double bedroom with coving to ceiling and wooden flooring. Double glazed window and centrally heated radiator. Useful over-stairs storage cupboard

### **Bedroom 2** 12' 0" x 6' 2" (3.66m x 1.88m)

Second bedroom with double glazed window and wooden flooring. Centrally heated radiator.

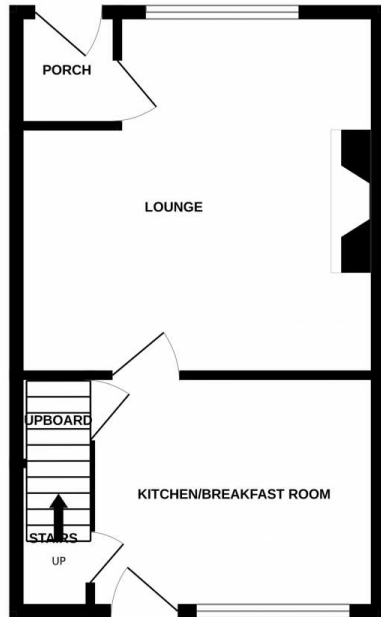
### **Bedroom 3** 9' 8" x 6' 5" (2.95m x 1.96m)

Third bedroom with double glazed window and wooden flooring. Centrally heated radiator.

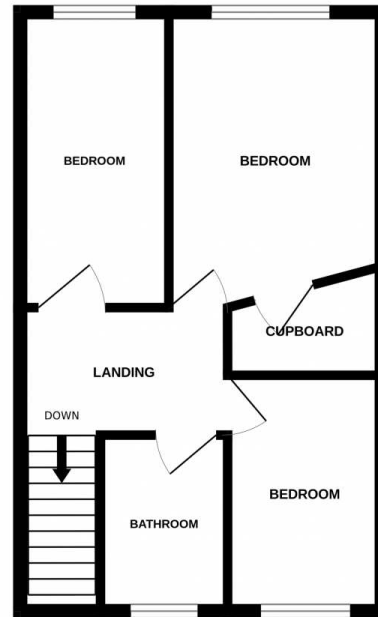
### **Bathroom** 9' 7" x 5' 1" (2.92m x 1.55m)

White fitted bathroom suite comprising of bath, low flush WC and hand basin. Fully tiled to bath area and partially tiled throughout. Double glazed window and centrally heated towel rail

GROUND FLOOR



1ST FLOOR



Whilst every attempt has been made to ensure the accuracy of the floorplan contained here, measurements of doors, windows, rooms and any other items are approximate and no responsibility is taken for any error, omission or mis-statement. This plan is for illustrative purposes only and should be used as such by any prospective purchaser. The services, systems and appliances shown have not been tested and no guarantee as to their operability or efficiency can be given.  
Made with Metropix ©2023

