



Clifton Drive | Thetford | | IP24 2FE

A brand new three bedroom shared ownership property provided by Havebury Housing Partnership on the Kingsfleet development in Thetford. This mid-terrace house comes with a fitted kitchen and bathroom, as well as allocated parking for two cars. Price based on a 40% purchase. Shares available from 25%-75% and you are then able to staircase to the full 100%

Shared Ownership £120,000

- Brand New
- Shared Ownership
- Three Bedrooms
- Mid-Terrace
- Allocated Parking For Two Cars
- Downstairs W/C
- No Staircase Restrictions

Approximate Room Sizes

ENTRANCE HALL

KITCHEN 10' 9" x 7' 10" (3.3m x 2.4m) A modern kitchen with a range of base and wall units. Roll edge work surfaces with inset single bowl and drainer sink unit. Integrated hob, cooker and extractor. Space for appliances.

LOUNGE/DINER 16' 8" x 17' 8" > 14' 1" (5.1m x 5.4m > 4.3m))

GROUND FLOOR W/C 8' 2" x 4' 3" (2.5m x 1.3m)

FIRST FLOOR LANDING

BEDROOM 1 13' 9" x 9' 6" (4.2m x 2.9m)

BEDROOM 2 14' 1" x 10' 2" > 7' 2" (4.3m x 3.1m > 2.2)

BEDROOM 3 10' 2" x 7' 6" > 3' 11" (3.1m x 2.3m > 1.2m)

BATHROOM 7' 6" x 6' 6" (2.3m x 2m) White suite comprising of a close coupled wc, pedestal wash hand basin, panelled bath with shower over. Radiator and complimentary tiling.

OUTSIDE SPACE The rear gardens commence with a patio area and the remainder laid to lawn. Timber shed and fence. Parking for two cars.

AGENTS NOTE

Full Price- £290,000

40% Purchase- £116,000

60% Rent- £398.75

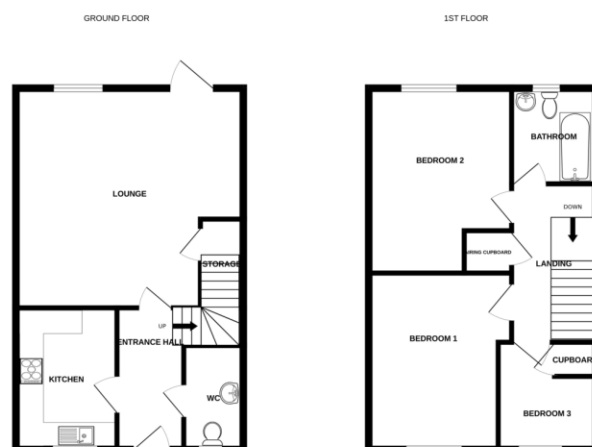
Service Charge- £30.10pcm

Local Authority – Breckland District Council

Council Tax Band – TBC

Tenure – Leasehold

Post Code – IP24 2FE



Whilst every attempt has been made to ensure the accuracy of the floorplan contained herein, measurements of areas, volumes, heights and other things are approximate and are not intended to be used for any purpose other than for guidance only. The plans are for illustrative purposes only and are not intended to be used for any other purpose. The services, systems and appliances shown have not been tested and are for information only. Measurements are taken to the best of our knowledge and belief.



Contact Details

6 The Traverse, Bury St Edmunds, IP33 1BJ

Tel: 01284 769598

Email: burystedmunds@bychoice.co.uk

Agents Note: Whilst every care has been taken to prepare these sales particulars, they are for guidance purposes only. All measurements are approximate and are for general guidance purposes only and whilst every care has been taken to ensure their accuracy, they should not be relied upon and potential buyers are advised to check the measurements.

