



Fore Street | Tamerton Foliot | Plymouth | PL5 4NA

Guide £350,000-£375,000

A unique opportunity to buy a detached house in the center of this popular village.

This four bedroom Cottage Style family home offers the best of both worlds, the feeling of a period property, with the low running costs of a modern home. Having been built circa 1999 the property benefits from double glazed windows and door and Gas central heating.

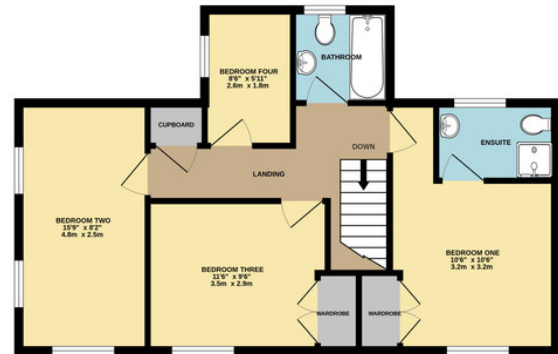
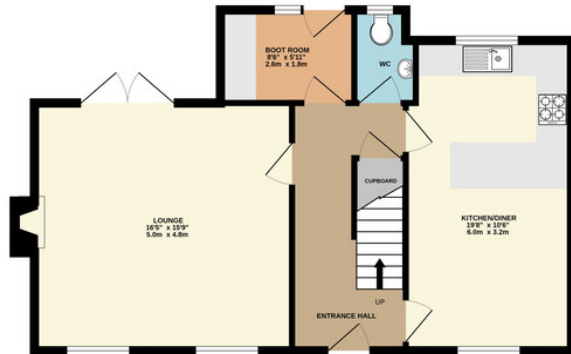
Upon inspection you will find an; entrance hall, dual aspect lounge, large kitchen / diner, boot room and WC on the ground floor. Whilst the first floor boasts a landing, three double bedroom (master en-suite) single bedroom and family bathroom. Outside is a large south westerly garden and larger than average garage. The property is within a conservation area, has a good selection of local facilities and within walking distance of Mary Dean Primary School, as well as many countryside walks.

- Detached Residence
- Four Bedrooms
- Village Location
- Short Walk To Mary Dean Primary School
- Large Kitchen Diner
- Two Bathrooms
- Close To Local Facilities



GROUND FLOOR
649 sq.ft. (60.3 sq.m.) approx.

1ST FLOOR
608 sq.ft. (56.5 sq.m.) approx.



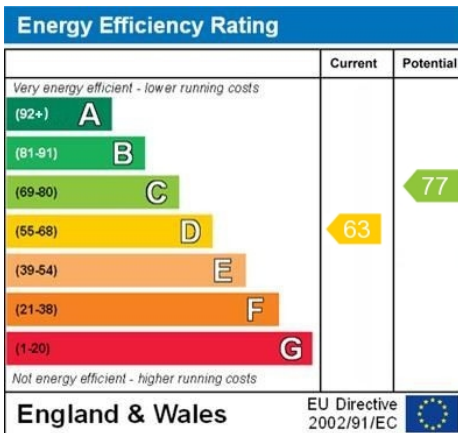
TOTAL FLOOR AREA : 1257 sq.ft. (116.8 sq.m.) approx.

Whilst every attempt has been made to ensure the accuracy of the floorplan contained here, measurements of doors, windows, rooms and any other items are approximate and no responsibility is taken for any error, omission or mis-statement. This plan is for illustrative purposes only and should be used as such by any prospective purchaser. The services, systems and appliances shown have not been tested and no guarantee as to their operability or efficiency can be given.
Made with Metropix 6/2023

Contact Details

48 Ebrington Street
Plymouth
Devon
PL4 9AD

www.athomelettings.com
info@athomeproperty.co.uk
01752 777070



WWW.EPC4U.COM

Agents Note: Whilst every care has been taken to prepare these sales particulars, they are for guidance purposes only. All measurements are approximate are for general guidance purposes only and whilst every care has been taken to ensure their accuracy, they should not be relied upon and potential buyers are advised to recheck the measurements