



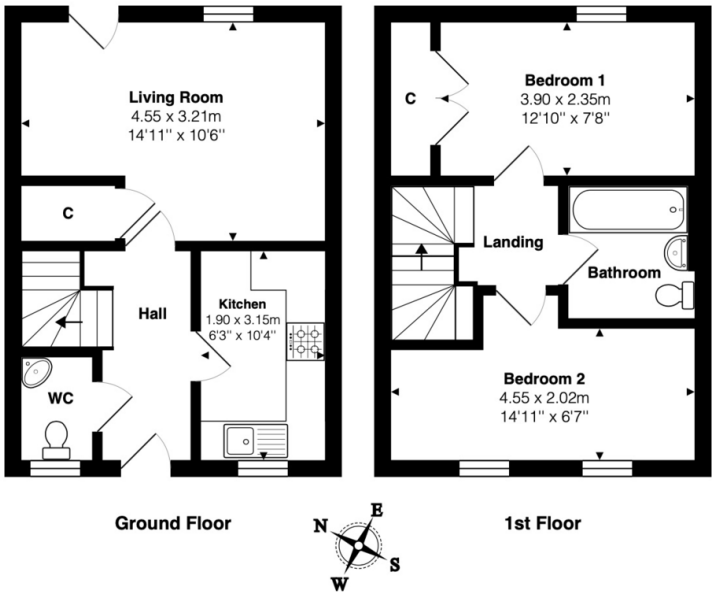
17 Orchid Drive

Bath

Asking Price Of £295,000

# Property Summary

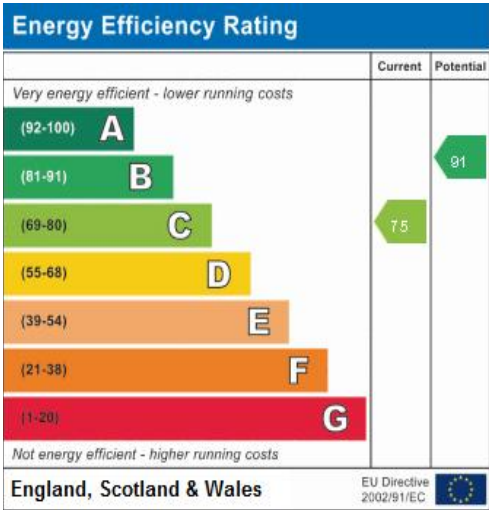
A neat end terrace 2 bedroom house with private parking space, ideally suited for first time buyers or a small family. Located in this popular residential area of Bath on a very good bus route, close to local amenities and excellent schools. Council tax ba nd - C, Freehold, EPC Rating 75C



Total Area: 58.9 m<sup>2</sup> ... 634 ft<sup>2</sup>

Whilst every attempt has been made to ensure the accuracy of the floor plan contained here, measurements of doors, windows, rooms and any other items are approximate and no responsibility is taken for any error, omission or mis-statement. This is for illustrative purposes only and should be used as such by any prospective purchaser.

[www.meyerenergy.co.uk](http://www.meyerenergy.co.uk)



- Private Parking Space
- Private Garden
- Downstairs WC
- Fully Fitted Kitchen
- Double Glazed
- Gas Central Heating
- Modern Family Home

30 Charles Street  
Bath  
Avon  
BA1 1HU

[www.propertylinkestates.com](http://www.propertylinkestates.com)  
[bath@propertylinkestates.com](mailto:bath@propertylinkestates.com)  
01225 447440

Agents Note: Whilst every care has been taken to prepare these sales particulars, they are for guidance purposes only. All measurements are approximate are for general guidance purposes only and whilst every care has been taken to ensure their accuracy, they should not be relied upon and potential buyers are advised to recheck the measurements