



HARRISON  
Sales &  
Lettings  
ARDIENSON

Shepherds Way, Stow On The Wold, GL54 1EA

Guide Price £450,000





A beautifully presented Cotswold Stone three-bedroom house in the Centre of Stow-On-The-Wold.

Upon entry to the home you are greeted with a large entrance hall with downstairs cloakroom. To your right hand side, there is a fully-equipped kitchen with new appliances; Dishwasher, Fridge/Freezer and double oven. Leading on is a spacious sitting room which has double doors out to a large garden room. There is also access to the utility room with brand new fitted washer/dryer and access to the single garage.

Upstairs consist of the principal bedroom with built in storage. There are two further bedrooms; one double with fitted wardrobes and one single bedroom. There is a newly fitted family bathroom with walk in shower, hand wash basin and WC.

To the rear of the property there is a landscaped garden which is mostly laid to patio making it easy to maintain.

The property benefits from gas central heating, recently upgraded double glazing and most recent improvements of a full redecoration and new carpets throughout.

EPC Rating: C

Council Tax Band: D

Tenure: Freehold

The popular town of Stow-on-the-Wold sits on the edge of the Cotswolds and is within an Area of Outstanding Natural Beauty. The town itself provides everyday shopping and business needs including a large supermarket and it is also an important center for antiques. The area is well catered for with excellent hotels and restaurants. There are regular local bus services to Cheltenham, Cirencester, Bourton-on-the-Water and Moreton-in-Marsh.





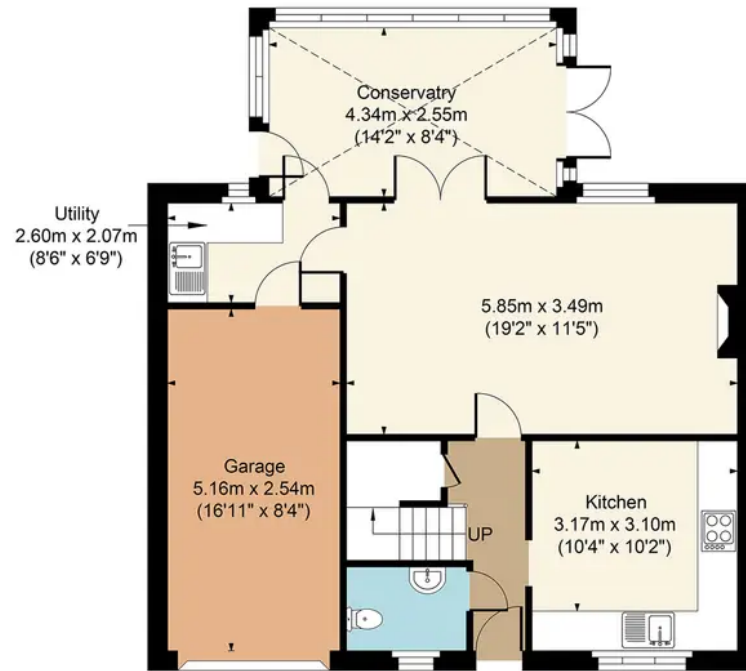


**22 Shepherds Way Stow GL54 1EA**

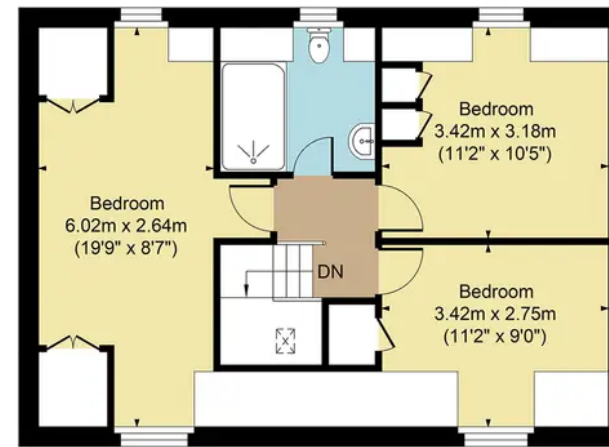
Main House Approx. Gross Internal Area:- 107.29 sq.m. 1155 sq.ft.

Garage Approx. Gross Area:- 13.42 sq.m. 144 sq.ft.

Total Approx. Gross Area:- 120.71 sq.m. 1299 sq.ft.



Ground Floor



First Floor

FOR ILLUSTRATIVE PURPOSES ONLY-NOT TO SCALE

The position & size of doors, windows, appliances and other features are approximate only.

□□□ Denotes restricted head height

[www.dmlphotography.co.uk](http://www.dmlphotography.co.uk)

High Street, Bourton-on-the-Water

Cheltenham, GL54 2AN

[harrisonhardie.co.uk](http://harrisonhardie.co.uk) 01451 822977