



Flat 5, 19-20 Harlow Moor Drive, Harrogate, North Yorkshire, HG2 0JX

£219,950

Flat 5, 19-20 Harlow Moor Drive, Harrogate, North Yorkshire, HG2 0JX

A very desirable, recently refurbished top-floor two-bedroomed apartment offering superb views over the famous Valley Gardens.

Versatile living space and ideally situated, being within easy walking distance to local shops, and restaurants on Cold Bath Road and local transport links to surrounding towns and cities.





GROUND FLOOR **FRONT ENTRANCE**

Entry-door phone system.

LIVING ROOM

Feature fireplace, windows to front and central heating radiator.

KITCHEN

With base units and complementary wooden work surfaces, white ceramic Belfast sink with chrome taps, under-counter built-in oven, ceramic glass hob, space and plumbing for washing machine, space for under-counter fridge. Wall-mounted Worcester combination boiler, windows to rear and central heating radiator.

DINING AREA

Raised level with window lights to ceiling and central heating radiator.

BEDROOM ONE

Double-glazed window to rear and central heating radiator.

BEDROOM 2

Velux window to front and radiator.

BATHROOM

White three-piece suite comprising of white panelled bath with chrome shower over, pedestal washbasin and low-flush WC. Window and central heating radiator.

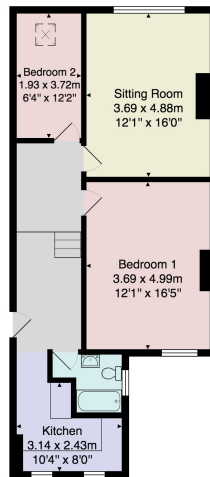
OUTSIDE

On-street parking.

Tenure – Leasehold

Council Tax Band - C





Total Area: 69.4 m² ... 747 ft²

All measurements are approximate and for display purposes only.

No liability is accepted by either the agency or Box Property Solutions Ltd as to the exact measurements of the rooms. Box Property Solutions Ltd retains the copyright on this plan and allows agents to use it with agreed permission.

Verity Frearson

26 Albert Street, Harrogate,
North Yorkshire, HG1 1JT

For all enquiries contact us on:

01423 562531

sales@verityfrearson.co.uk

Energy Efficiency Rating			Environmental (CO ₂) Impact Rating		
	Current	Potential		Current	Potential
Very energy efficient - lower running costs			Very environmentally friendly - lower CO ₂ emissions		
[92-100] A			[191-200] A		
[85-91] B			[161-190] B		
[69-84] C			[136-160] C		
[55-68] D			[115-135] D		
[39-54] E			[93-114] E		
[23-38] F			[71-92] F		
[1-22] G			[50-70] G		
Not energy efficient - higher running costs			Not environmentally friendly - higher CO ₂ emissions		
England & Wales	EU Directive 2002/91/EC		England & Wales	EU Directive 2002/91/EC	