



54, Dorset House, Gloucester Place, Marylebone, London, NW1
5AE

54, Dorset House, Gloucester Place, Marylebone, London, NW1 5AE

Private Balcony | Lift | 1930s Art Deco building | Concierge | 24 Hour Porterage | Close to amenities |

DESCRIPTION

Stunning completely refurbished, spacious and bright 2 bedrooms / 2 bathrooms apartment in the much sought-after Dorset House block with 24 hours porters. This apartment has been thoroughly modernised throughout by the owners and is very well presented. The apartment benefits from very good light from all of its rooms. Large reception room with a private balcony. Master bedroom with a modern en-suite bathroom, fitted wardrobes and with access to the private balcony. Second bedroom with fitted wardrobes also leading onto another private balcony. Fully fitted and equipped kitchen with all the modern conveniences.

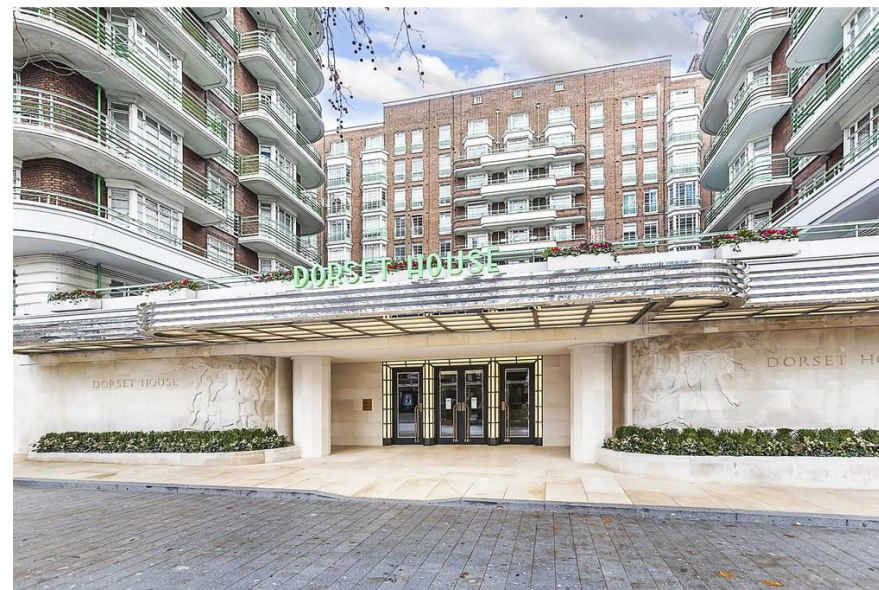
Dorset House is an imposing much sought after secure residential with the benefits of 24 hours porters and passenger lifts. Located just moments from Baker Street and Marylebone stations. Regents Park with its wide-open expanses is a short walk away and so are the amenities of Marylebone High Street and Oxford Street.

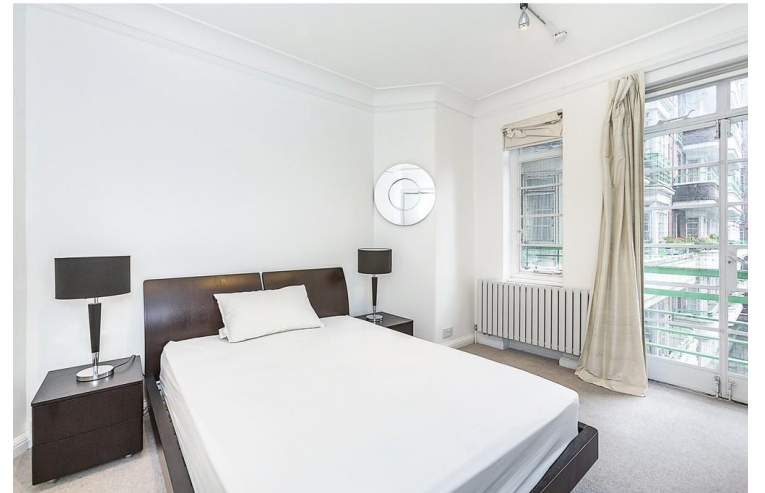
KEY FEATURES

- 2 Bedrooms
- 2 Bathrooms
- Reception Ro

KEY FEATURES

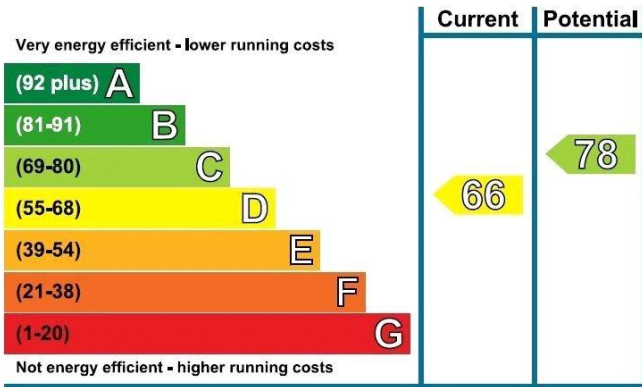
- Private Balcony
- Lift
- 1930s Art Deco building
- Concierge



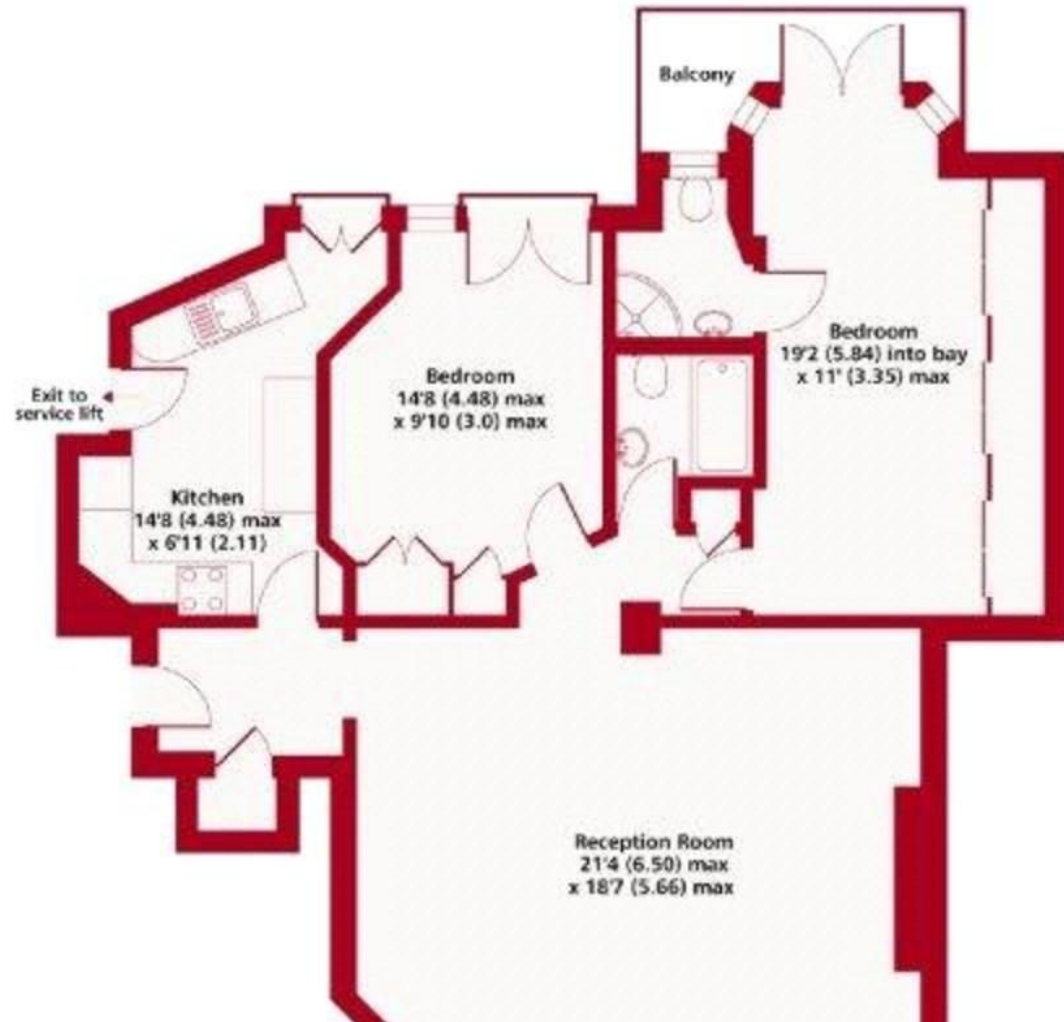




Energy Efficiency Rating



Gloucester Place NW1
Gross Internal Floor Area 991 sqft 92.1 sqm



ADDITIONAL INFORMATION

Tenure: %tenure%

Local Authority: Westminster City Council