



Flat 8, Denewood Queens Drive, Windermere
£200,000

KITCHEN

9' 4" x 7' 2" (2.84m x 2.19m)

Double glazed window, radiator, good range of base and wall units, stainless steel sink, built in oven, electric hob with extractor hood over, space for fridge and freezer, fitted worktop, plumbing for washing machine, tiled splashbacks.

INNER HALL

4' 0" x 3' 11" (1.22m x 1.19m)

Built in cupboard housing gas combination boiler.

SITTING ROOM

17' 3" x 12' 8" (5.27m x 3.87m)

Double glazed Bay window, radiator, understairs storage cupboard, high level storage cupboard.

SHOWER ROOM

7' 1" x 3' 10" (2.17m x 1.18m)

Heated towel radiator, three piece suite in white comprises W.C., wash hand basin and fully tiled shower cubicle with thermostatic shower fitment, recessed spotlights, extractor fan, fitted mirrored wall unit, tiling to walls.

BEDROOM

17' 1" x 12' 6" (5.2m x 3.81m)

Two double glazed Velux windows with integrated blinds, radiator, access to substantial eaves storage, recessed spotlights.

OUTSIDE

There is a communal garden and allocated parking for one.

SERVICES

Mains electricity, mains gas, mains water, mains drainage.

TENURE: Leasehold Length of lease: 999 year lease from 1987

Service charge:£300 per annum Ground Rent: N/A

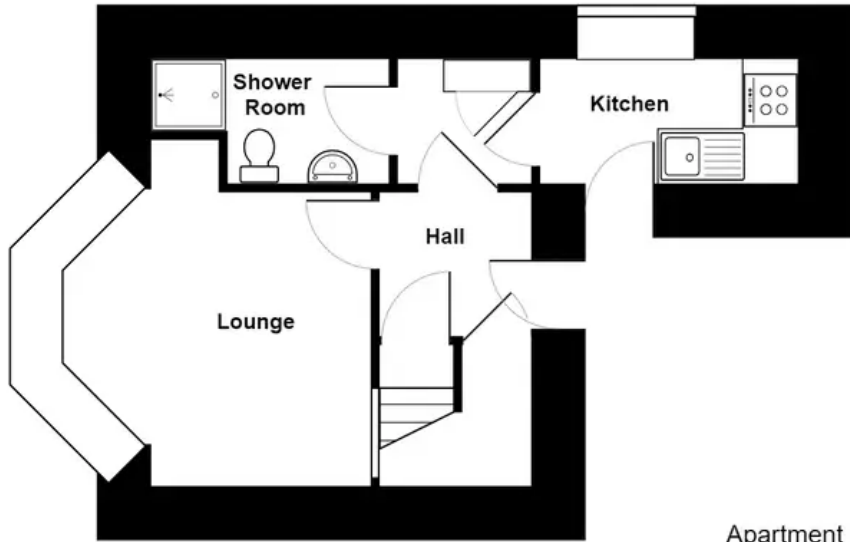
COUNCIL TAX: Band A

EPC Rating: D

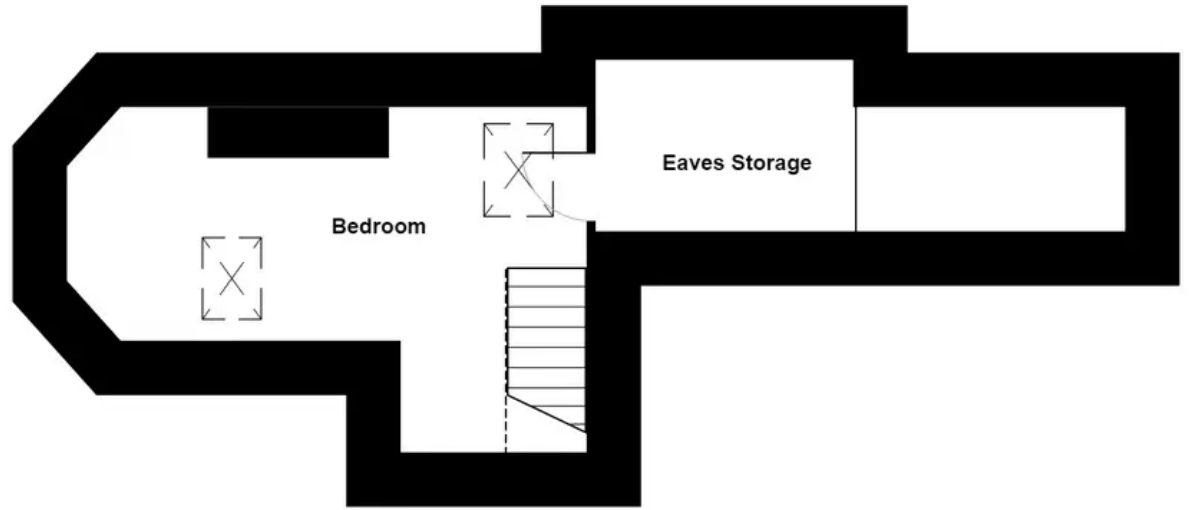
DIRECTIONS:

From our Windermere office proceed down New Road towards Bowness. Turn left into Queens Drive just before the zebra crossing. Proceed up Queens Drive to find Denewood located on the right just after the turning for Sunny Bank Road.WHAT3WORDS: honey.gallons.chess





Floor 1



Floor 2

Apartment 8 Denewood, Queens Drive, Windermere

For illustrative purposes only - not to scale. The position and size of features are approximate only.
© North West Inspector.



THW Estate Agents

25B Crescent Road, Windermere - LA23 1BJ

015394 47825 • windermere@thwestateagents.co.uk • www.thwestateagents.co.uk



Your Local Estate Agents **Thomson Hayton Winkley**