



Flat 18, Cardigan House Kent Street, Southsea

Offers in Region of £170,000

 chinneckshaw



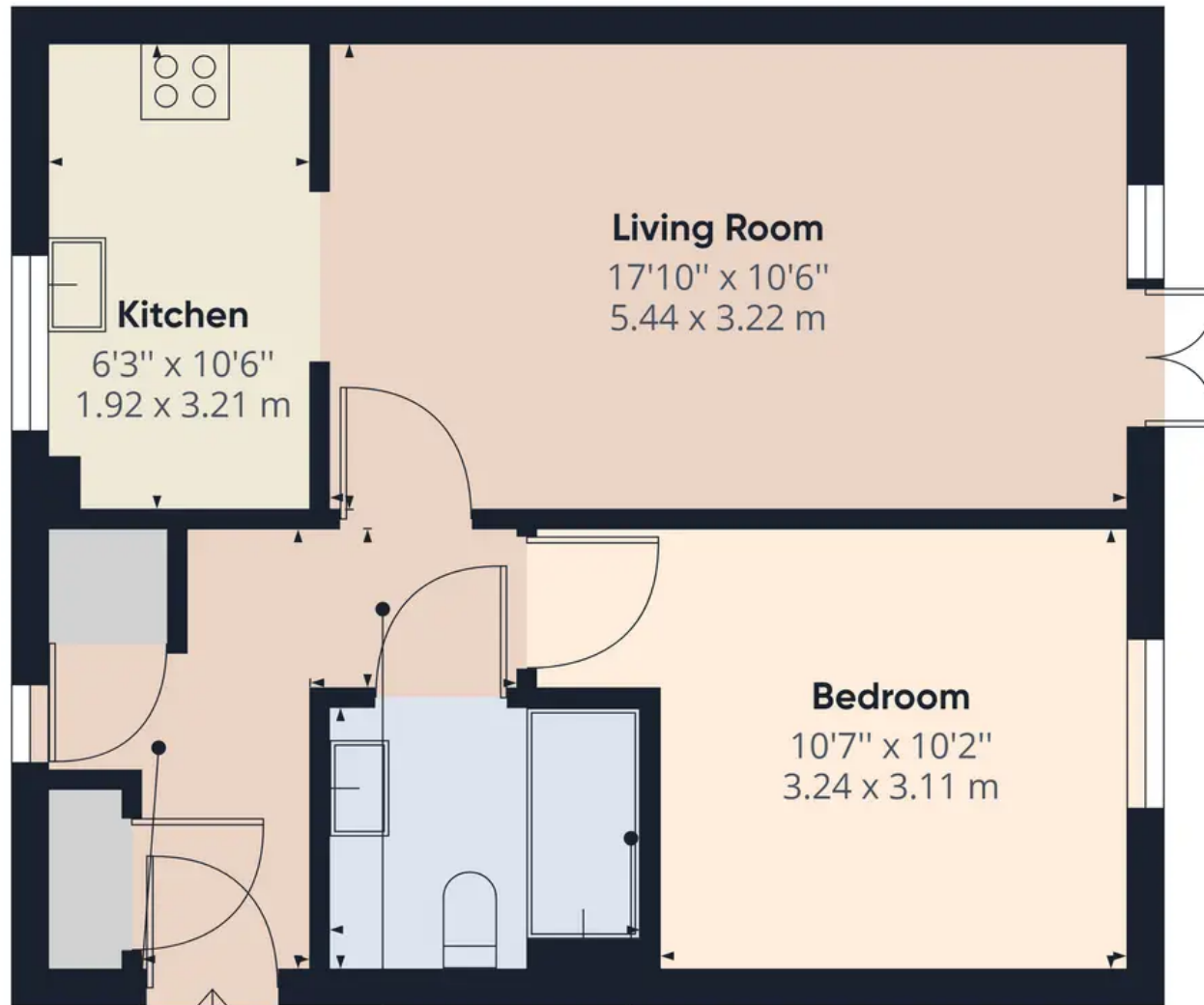
Flat 18

Cardigan House Kent Street, Portsmouth

Welcome to this impeccably presented ground floor apartment, situated in the highly sought-after area of Portsmouth. Boasting a modern design throughout, this property offers the perfect combination of comfort and style. Step inside to discover a generously sized bedroom, providing a tranquil haven to unwind after a long day. The sleek and contemporary bathroom showcases modern fixtures and fittings, creating a luxurious space for relaxation and rejuvenation. The heart of this apartment is the spacious living area, seamlessly merging with the well-appointed kitchen. Designed with convenience in mind, this open-plan layout offers both versatility and functionality. The kitchen features high-quality appliances and ample countertop space, making it a pleasure to prepare delicious meals and entertain guests. Storage is a key feature of this apartment, with plentiful options available to keep your living space organised and clutter-free. With storage cupboards in the kitchen, hallway and space for freestanding storage in the bedroom, you will never be short of options. One of the standout features of this property is the allocated private parking space, providing convenience and peace of mind. No more searching for parking spots or worrying about the security of your vehicle – this dedicated space is exclusively yours. Situated in a highly popular area of Portsmouth, this apartment benefits from its close proximity to Gunwharf Quays and Portsmouth University. Enjoy the vibrant atmosphere of Gunwharf Keys, with its array of shops, restaurants, and entertainment options. For those pursuing higher education, Portsmouth University is just a stone's throw away, making this apartment an ideal choice for students and professionals alike. Don't miss the chance to own this modern and well-presented ground floor apartment in the heart of Portsmouth's most desirable location. Contact us today to arrange a viewing and secure your slice of contemporary living in this thriving coastal city.

Council Tax band: B Tenure: Leasehold





Hallway
3'9" x 10'0"
1.15 x 3.06 m

Hallway
4'7" x 3'7"
1.41 x 1.10 m

Bathroom
7'2" x 6'3"
2.20 x 1.91 m

Approximate total area⁽¹⁾
499.68 ft²
46.42 m²

(1) Excluding balconies and terraces

While every attempt has been made to ensure accuracy, all measurements are approximate, not to scale. This floor plan is for illustrative purposes only.

GIRAFFE 360



Chinneck Shaw

Bridge House, Milton Road, Portsmouth – PO3 6AN

023 9282 6731

hello@chinneckshaw.co.uk

www.chinneckshaw.co.uk/

Chinneck Shaw, Bridge House, Milton Road, PO3 6AN Consumer Protection from Unfair Trading Regulations 2008: These details are for guidance only and complete accuracy cannot be guaranteed. If there is any point which is of particular importance, verification should be obtained. They do not constitute a contract or part of a contract. All measurements are approximate. No guarantee can be given with regard to planning permissions or fitness for purpose. No apparatus, equipment, fixture or fitting has been tested. Items shown in the photographs are NOT necessarily included. Interested Parties are advised to check availability and make an appointment to view before travelling to see a property.